



OVER 60?

Secure this property
for up to **59% less!**

Guide Price

£450,000

Freehold

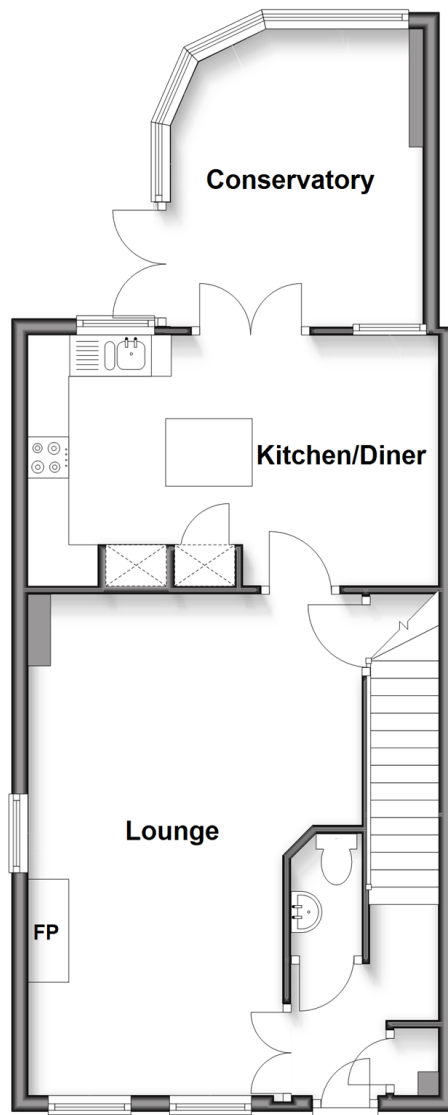
3x  2x  2x 

**Braeburn Way, Kings
Hill, West Malling, Kent,
ME19**

Wards
Helping you move forwards

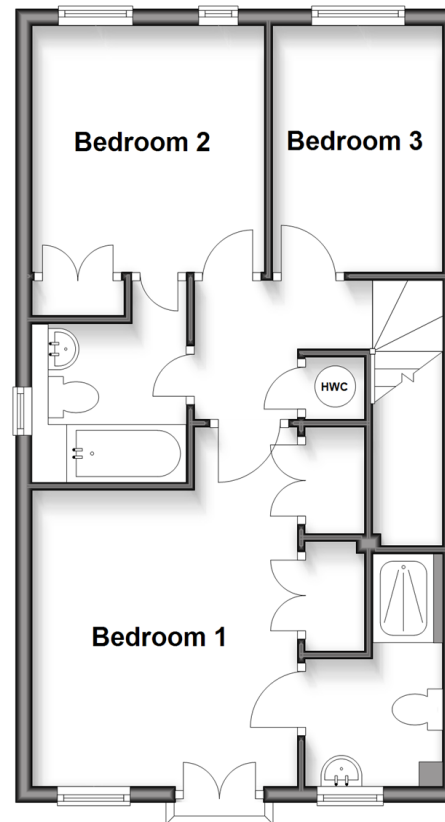
Ground Floor

Approx. 57.5 sq. metres (619.4 sq. feet)



First Floor

Approx. 46.5 sq. metres (500.1 sq. feet)



Accommodation

GROUND FLOOR

Entrance Hall

Cloakroom

Lounge

Kitchen/Diner

Conservatory

FIRST FLOOR

Landing

Bedroom 1

En-Suite Shower Room

Bedroom 2

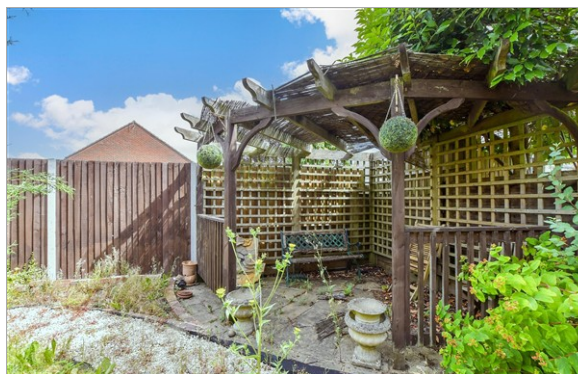
Bedroom 3

Jack N Jill Bathroom

OUTSIDE

Front & Rear Gardens

Garage & Driveway



Main features

- Sought after semi-detached house in prestigious road
- Centrally located with access to amenities & schools
- Garage & off street parking
- Perfect opportunity to put your own stamp on
- A chain free home that is full of potential with excellent existing accommodation



Nearest Schools

Primary Schools: Kings Hill School 0.4 miles, Valley Invicta Primary 0.4 miles, The Discovery School 1.0 miles
Secondary Schools: Grange Park School 3.7 miles, The Malling School 4.0 miles, The Maplesden Noakes School 4.5 miles



Transport Information

Train Stations: West Malling 3.0 miles, East Farleigh 3.3 miles, New Hythe 3.6 miles



Address

Braeburn Way, Kings Hill, West Malling, Kent, ME19



Directions

For directions to this property please contact us.



Wards
Helping you move forwards

Call Kings Hill Branch 01732 222211 ■ wardsofkent.co.uk



- Legal advice should be taken to verify fixtures/fittings, planning, alterations and/or lease details
- Appliances & services are untested, dimensions are approximate and floor plans are not to scale
- Through a Homewise Home For Life Plan people aged 60+ can secure this property for up to 50% less, by purchasing a Lifetime Lease.



12405158/20251120/HG/WA