



HEARTWOOD
HOMES

Hatfield Road, St. Albans, AL1 4UN

Offers Over £850,000

🛏️ 4 🚿 2 🚗 2



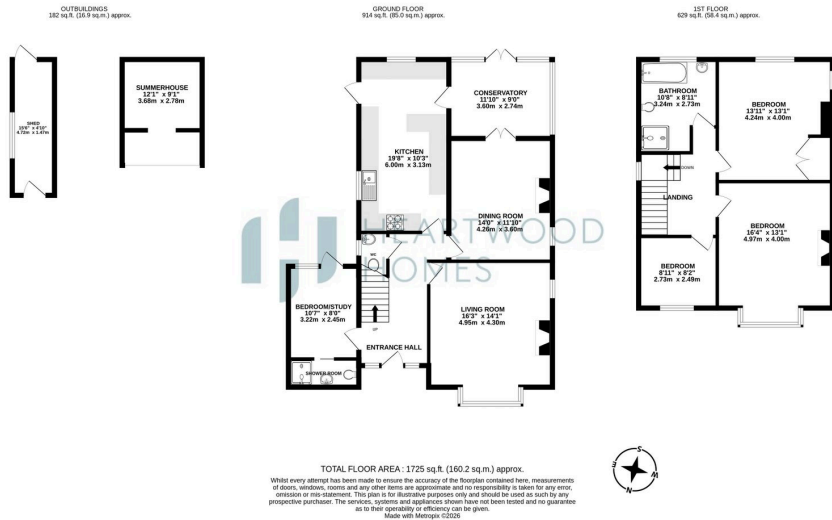
This attractive three/ four bedroom detached family home is situated in a fantastic and highly sought after location, offering excellent potential to extend and further enhance, subject to the usual planning permissions. Boasting spacious accommodation throughout, the property presents an exciting opportunity for buyers looking to create their ideal long term home.

The house benefits from generous living space, a well proportioned rear garden, and a fantastic garden cabin, ideal for entertaining or peaceful retreat. With ample scope for modernisation or expansion, the property is perfectly suited to growing families or those seeking a home with flexibility and future potential.

Conveniently positioned close to highly regarded schools, including Beaumont Secondary School, local amenities, and excellent transport links, this is a rare opportunity to acquire a detached home with a superb garden feature, huge potential, and an enviable location in St Albans.

Planning permission is approved for extensive extension and remodelling work and can be found under reference: 5/2021/3499





- Located in a highly sought after area of St Albans, ideal for families and long term
- Spacious and well proportioned accommodation throughout the property
- Generous rear garden offering ample outdoor space for relaxation and positioning close to highly regarded local schools, including Beaumont School
- Planned by a specialist approved for extensive extension and remodelling work and can be found under reference: 5/2021/3499
- Attractive four bedroom detached family home with strong kerb appeal
- Offering a superb opportunity to craft a truly bespoke dream home.
- Includes a versatile garden cabin perfect for entertaining or a peaceful retreat
- Excellent transport links providing convenient access to surrounding areas and
- EPC Grade E

