



PropertyLine



209A Dogsthorpe Road

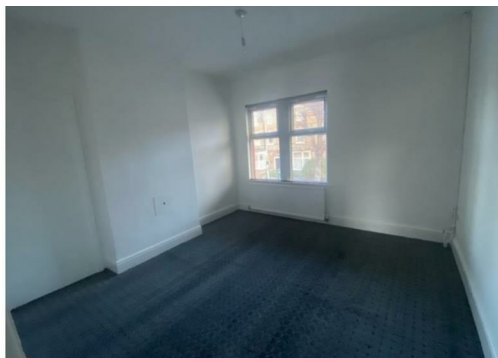
, Peterborough, PE1 3AT

£675 PCM



ONE BEDROOM FLAT ON DOGSTHORPE ROAD WITH PRIVATE PARKING.

One bedroom flat located near city centre. Walking distance to local amenities. Properties comprises of living room, separate kitchen, double bedroom and bathroom. Off road parking available.



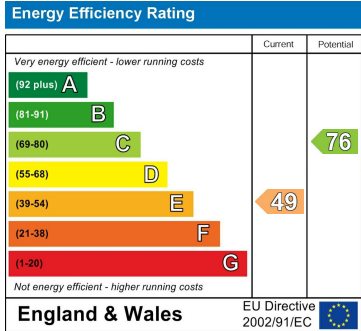
Area Map



Floor Plans



Energy Efficiency Graph



These particulars, whilst believed to be accurate are set out as a general outline only for guidance and do not constitute any part of an offer or contract. Intending purchasers should not rely on them as statements of representation of fact, but must satisfy themselves by inspection or otherwise as to their accuracy. No person in this firms employment has the authority to make or give any representation or warranty in respect of the property.