



PORCHESTER PLACE, W2

£1,000,000

Two double bedrooms

Long lease

Lift

Popular development

Amazing views

Porter



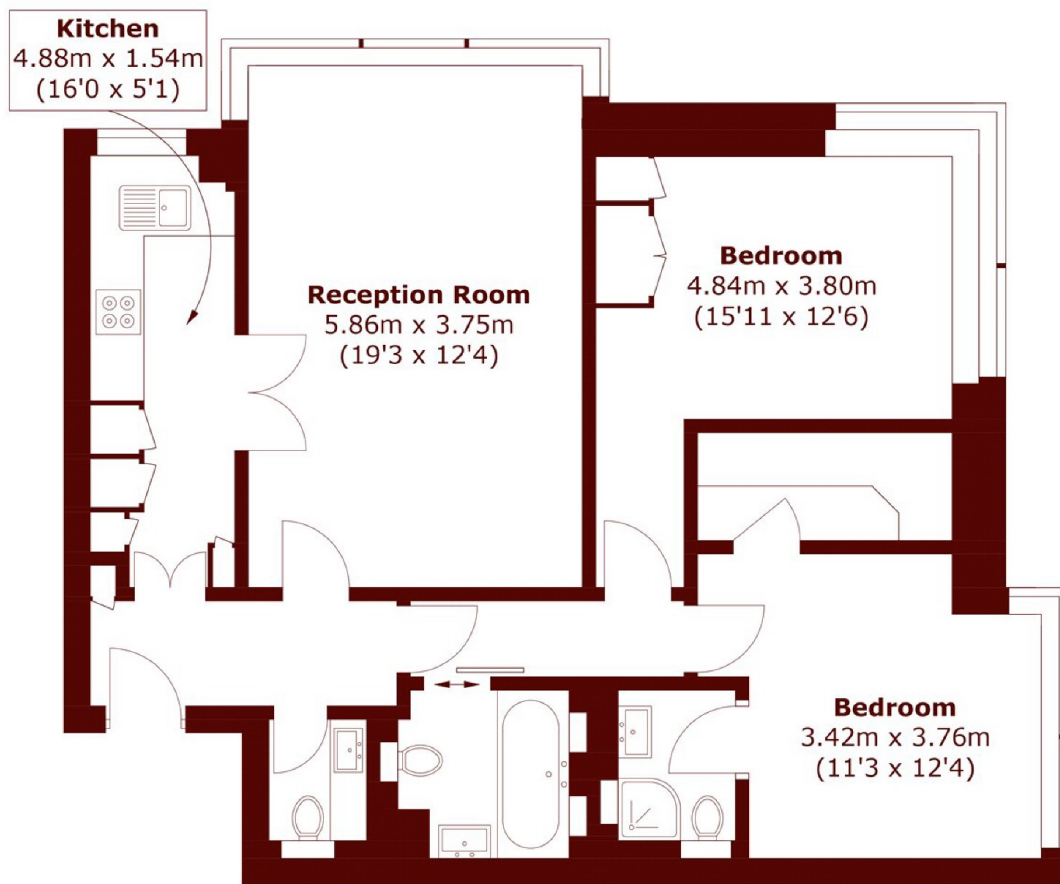
ABOUT THE PROPERTY

A beautifully finished two double bedroom apartment boasting a beautiful semi open plan kitchen and reception room, one bedroom has a walk-in wardrobe and ensuite, the second bedroom is spacious with fitted storage. The apartment has a secondary bathroom with additional w/c. There is ample storage throughout, and the apartment is finished in a neutral style with fantastic London views . Porchester Place is one of the Hyde Park Estates Iconic developments. The 24-hour porters are helpful and attentive and ensure that the building is kept neat and tidy.

The building is well located for Hyde Park, Marble Arch and Paddington.



STEP INSIDE PORCHESTER PLACE



Twenty First Floor

Total area (approx.): 80.2 sq. m (863.3 sq. ft)

Marylebone & Mayfair
020 7935 1775

Energy Rating: E We aim to make our particulars both accurate and reliable. However, they are not guaranteed; nor do they form part of an offer or contract. If you require clarification on any points then please contact us, especially if you're traveling some distance to view. Please note that appliances and heating systems have not been tested and therefore no warranties can be given as to their good working order

MARSH &
PARSONS