











## 34 Egstow Street

Clay Cross • Chesterfield • S45 9NJ

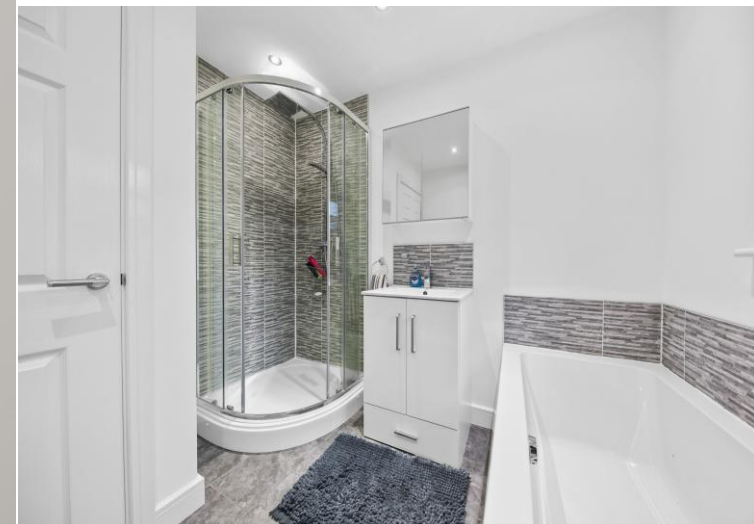
£230,000

A well-presented two-bedroom detached bungalow located in the popular and well-connected area of Clay Cross. Positioned south of Chesterfield, the area benefits from strong commuter links, excellent local amenities, good schools and well-maintained outdoor spaces. This modern bungalow is an ideal choice for those retiring, downsizing or single professionals seeking a comfortable, low-maintenance home. You enter the property into a welcoming hallway. To the right sits the modern kitchen-diner, fitted with sleek gloss units and integrated appliances, along with space for freestanding items and a small dining table. Continuing through the hallway, you reach the generously sized living room at the rear, complete with sliding doors opening directly onto the garden. The main bedroom is a rear-facing double and includes fitted sliding wardrobes. Bedroom two is a well-proportioned single positioned at the front of the bungalow. The modern bathroom features a stylish four-piece suite comprising a bath, toilet, sink and separate corner shower cubicle. Externally, the rear garden is designed for easy maintenance, offering a combination of patio, astroturf lawn, pebbled areas and a useful storage shed. To the front, the property enjoys an astroturfed lawn and a driveway providing parking for multiple vehicles.









- Two Bedroom Detached Bungalow
- South of Chesterfield - Great for Commuters
- Ideal for Downsizers or Professionals
- Kitchen Diner w/ Integrated Appliances
- Rear Living Room with Sliding Doors

- Main Double Bedroom & Good Sized Single
- Four Piece Suite Bathroom
- Easy to Maintain Rear Garden
- Driveway Parking for Multiple Cars
- Council Tax Band C/EPC Rating B









# 34 EGSTOW STREET

APPROXIMATE GROSS INTERNAL AREA = 56.3 SQ M / 605.8 SQ FT

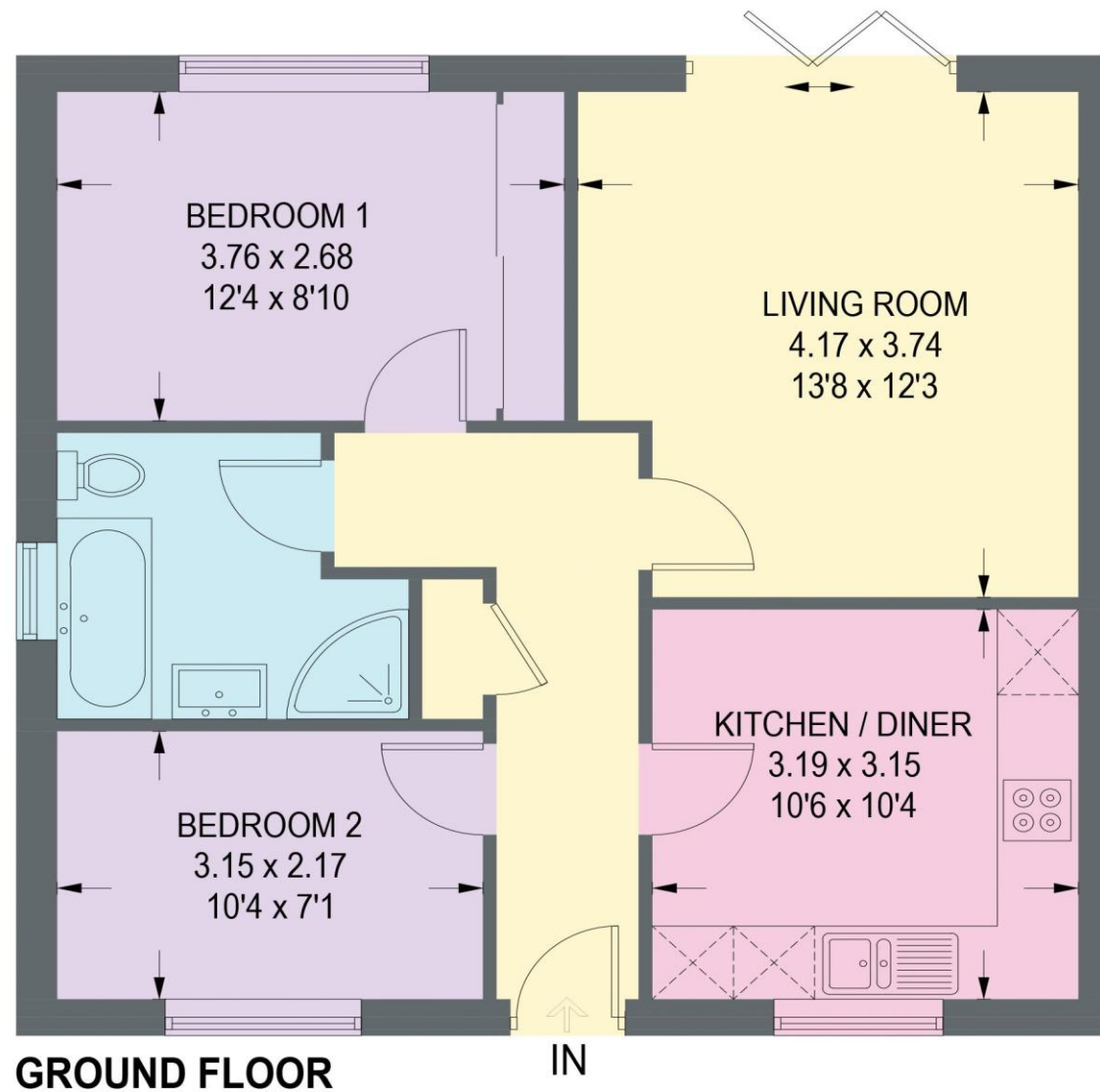


Illustration for identification purposes only, measurements are approximate, not to scale. (ID1274075)





haus

31 West Bars, Chesterfield, S40 1AG  
[chesterfield@haushomes.co.uk](mailto:chesterfield@haushomes.co.uk) [haushomes.co.uk](http://haushomes.co.uk)

01246 380 535