

OVER 60?

Secure this property
for up to **59% less!**



Guide Price
£650,000
Freehold

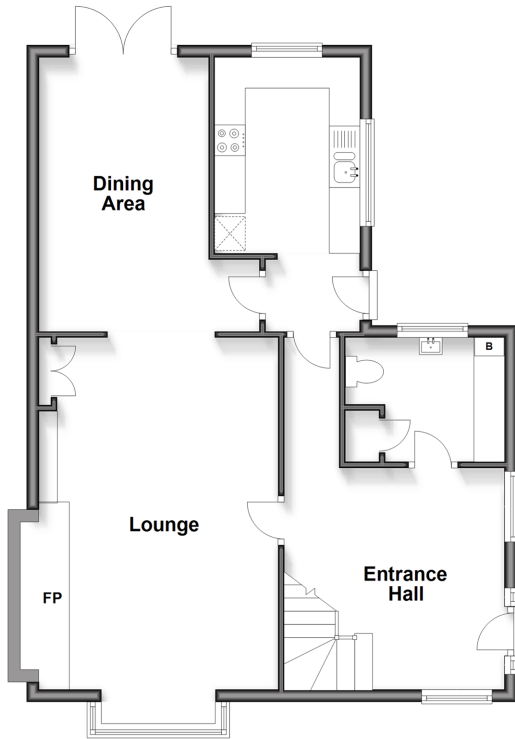
4x  2x  4x 

The Drove, Chestfield, Whitstable, Kent,
CT5

Wards
Helping you move forwards

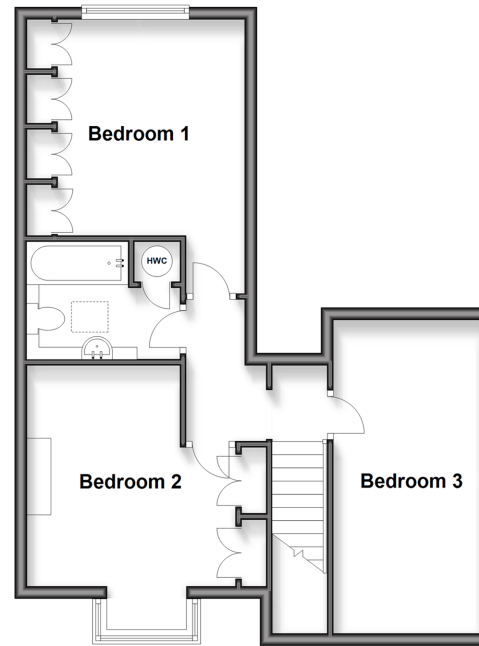
Ground Floor

Approx. 68.0 sq. metres (731.5 sq. feet)



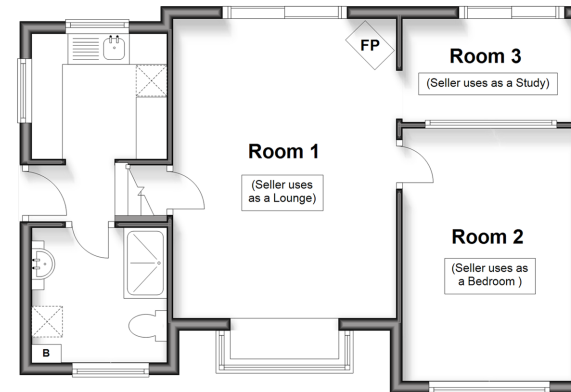
First Floor

Approx. 51.5 sq. metres (554.5 sq. feet)



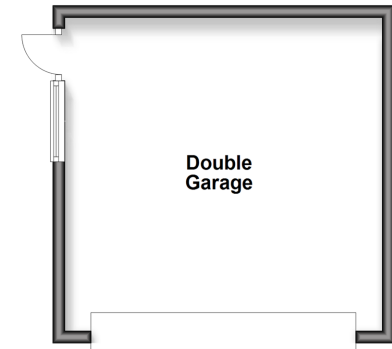
Split Level Outbuilding 1

Approx. 47.6 sq. metres (512.5 sq. feet)



Outbuilding 2

Approx. 26.4 sq. metres (284.4 sq. feet)



Accommodation

GROUND FLOOR

Entrance Hallway
Cloakroom/Utility Room : 8'7 x 6'6 (2.62m x 1.98m)
Kitchen: 14'8 x 7'10 (4.47m x 2.39m)
Dining Area: 14'8 x 9'1 (4.47m x 2.77m)
Lounge: 21'0 x 11'9 (6.41m x 3.58m)

FIRST FLOOR

Landing
Bedroom 1: 17'2 x 7'11 (5.24m x 2.41m)
Bedroom 2 : 14'7 x 14'7 (4.45m x 4.45m)
Bathroom
Bedroom 3: 11'11 x 11'7 (3.63m x 3.53m)

ANNEX

Kitchen: 7'2 x 6'9 (2.19m x 2.06m)
Shower Room : 7'2 x 7'2 (2.19m x 2.19m)
Lounge: 16'0 x 12'0 (4.88m x 3.66m)
Bedroom : 13'7 x 9'3 (4.14m x 2.82m)
Study: 9'1 x 5'3 (2.77m x 1.60m)

OUTSIDE

Double Garage: 17'5 x 16'11 (5.31m x 5.16m)
Off-Road Parking
Front Garden
Rear Garden



Main features

- End-of-terrace cottage with charming period features
- Detached annexe/bungalow with dedicated facilities to utilise as a separate dwelling
- Large double garage and off-road parking
- Beautiful front and rear gardens
- Highly sought-after private road and village location in Chestfield, Whitstable



Nearest Schools

Primary Schools: Swalecliffe Community Primary 0.8 miles, Briary Primary 1.3 miles, St Mary's Catholic Primary 1.5 miles

Secondary Schools: The Whitstable School 1.3 miles,



Transport Information

Train Stations: Chestfield & Swalecliffe 0.6 miles, Whitstable 1.5 miles, Herne Bay 2.2 miles



Address

The Drove, Chestfield, Whitstable, Kent, CT5



Directions

For directions to this property please contact us.



Call Whitstable Branch 01227 772272 ■ wardsofkent.co.uk



- Legal advice should be taken to verify fixtures/fittings, planning, alterations and/or lease details
- Appliances & services are untested, dimensions are approximate and floor plans are not to scale
- Through a Homewise Home For Life Plan people aged 60+ can secure this property for up to 50% less, by purchasing a Lifetime Lease



12033764/20260102/NF/NF