

## Ledbury Road, W11

£1,140,000

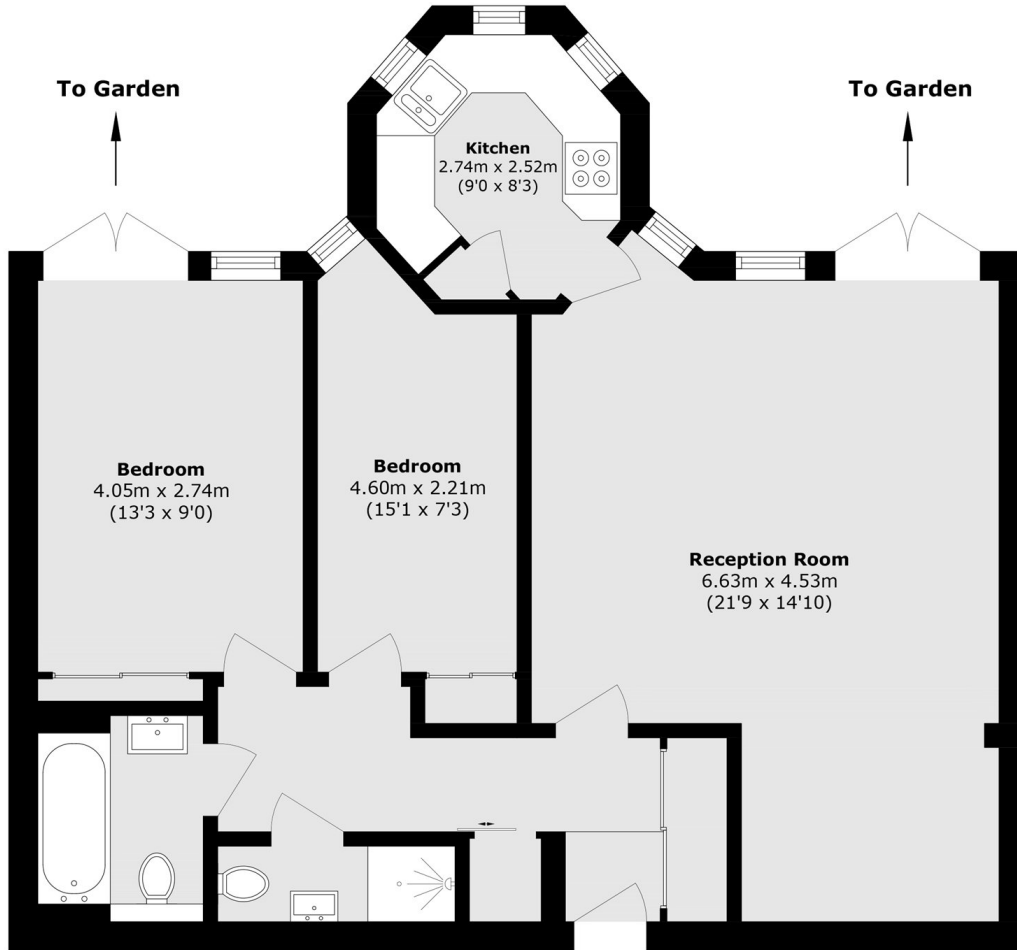
A recently refurbished two double bedroom garden flat. The apartment has a separate high specification kitchen, two stylish bathrooms, built-in wardrobes and a spacious reception room with room to dine, leading directly to the private West facing garden, with rear private access.

Conveniently located off Westbourne Grove which has a wide array of chic bars, restaurants and boutiques, as well as short walking distance to Body Works West health club and The Electric Cinema.

### Features

- West Facing Garden
- Two Bedrooms
- Two Bathrooms
- Recently Refurbished
- High Specification
- Prime Notting Hill

# Ledbury Road, London, W11



Total area (approx.): 72.0 sq. m (775.0 sq. ft)