

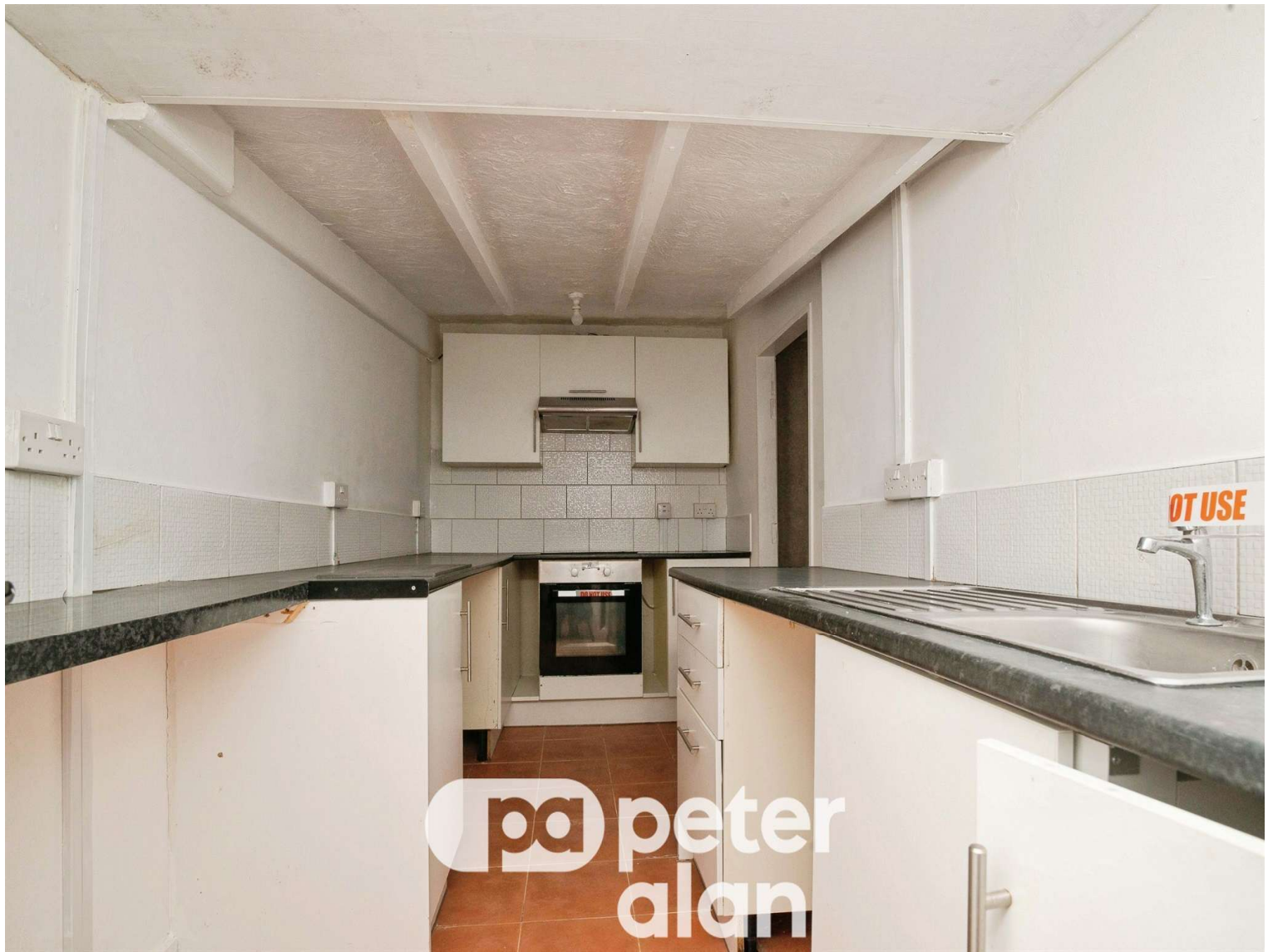


## Rochester Road, £170,000

- End of terrace
- Deceptively spacious
- Four bedrooms
- No onward chain
- Sought after location
- EPC Rating: C



 4  1  3



## About the property

An opportunity to purchase this distinctive end-of-terrace property, which offers deceptively spacious and versatile accommodation arranged over two floors.

The ground floor comprises a bay-fronted living room open plan to a generous dining area, creating an excellent space for family living and entertaining. To the rear are two separate kitchen rooms, both fitted with electric hobs, providing flexible culinary and storage options. Double doors from the dining area and kitchen open onto an enclosed, low-maintenance courtyard, which further benefits from side access to the lane. Beyond the kitchen area is a wet room, along with extensive storage accommodation converted from a former garage. These additional rooms lend themselves to a variety of potential uses, subject to the buyer's requirements. On-street parking is available to the front of the property.

The property is conveniently located just outside Newport, offering excellent road and rail links for commuters.

Public Notice



## Accommodation

### Location

The property is conveniently located just outside Newport, offering excellent road and rail links for commuters. Newport itself provides a vibrant high street with a wide range of shops, cafes and restaurants, together with Newport Market and Friars Walk. Well-regarded local schooling further enhances the appeal for families.

01633 221892

newport@peteralan.co.uk

## Floorplan



Total floor area 225.0 m<sup>2</sup> (2,422 sq.ft.) approx

This floor plan is for illustrative purposes only. It is not drawn to scale. Any measurements, floor areas (including any total floor area), openings and orientation are approximate. No details are guaranteed, they cannot be relied upon for any purpose and they do not form part of any agreement. No liability is taken for any error, omission or misstatement. A party must rely upon its own inspection(s). Powered by [www.propertybox.io](http://www.propertybox.io)



## Important Information

Note while we endeavour to make our sales details accurate and reliable, if there is any point which is of particular interest to you, please contact the office and we will be pleased to confirm the position for you. We have not personally tested any apparatus, equipment, fixtures, fittings or services and cannot verify they are in working order or fit for their purposes. Nothing in these particulars is intended to indicate that carpets or curtains, furnishings or fittings, electrical goods (whether wired or not). Gas fires or light fittings or any other fixtures not expressly included form part of the property offered for sale. This computer generated Floorplan, if applicable, is intended as a general guide to the layout and design of the property. It is not to scale and should not be relied upon for dimensions. Tenure: We cannot confirm the tenure of the property as we have not had access to the legal documents. The buyer is advised to obtain verification from their solicitor or surveyor.

Peter Alan Limited is registered in England and Wales under company number 2073153, Registered Office is Cumbria House, 16-20 Hockliffe Street, Leighton Buzzard, Bedfordshire, LU7 1GN. VAT Registration Number is 500 2481 05. For activities relating to regulated mortgages and non-investment insurance contracts, Peter Alan Limited is an appointed representative of Connells Limited which is authorised and regulated by the Financial Conduct Authority. Connells Limited's Financial Services Register number is 302221. Most buy-to-let

