



5, Leasows Park, Shawbury, SY4 4UU
£900 Per Month



5, Leasows Park, Shawbury, SY4 4UU

£900 Per Month

VIRTUAL TOUR AVAILABLE: A beautifully presented and improved three bedroom semi-detached family house occupying a quiet cul-de-sac position with a lovely outlook. The property is located within the popular village of Shawbury, a short distance from excellent amenities, primary school, road links, and less than 8 miles to the north of Shrewsbury town centre.

Available: 21/05/2026

Description

Comprising: Hallway, living room, kitchen with integrated oven and gas hob, space for freestanding fridge/freezer and washer/dryer, dining area. Stairs to first floor landing, two double bedrooms, further single bedroom, en-suite shower room and family bathroom with shower over bath. Garden to rear including summerhouse. Driveway parking for two cars. Gas central heating. Double glazing. EPC C.



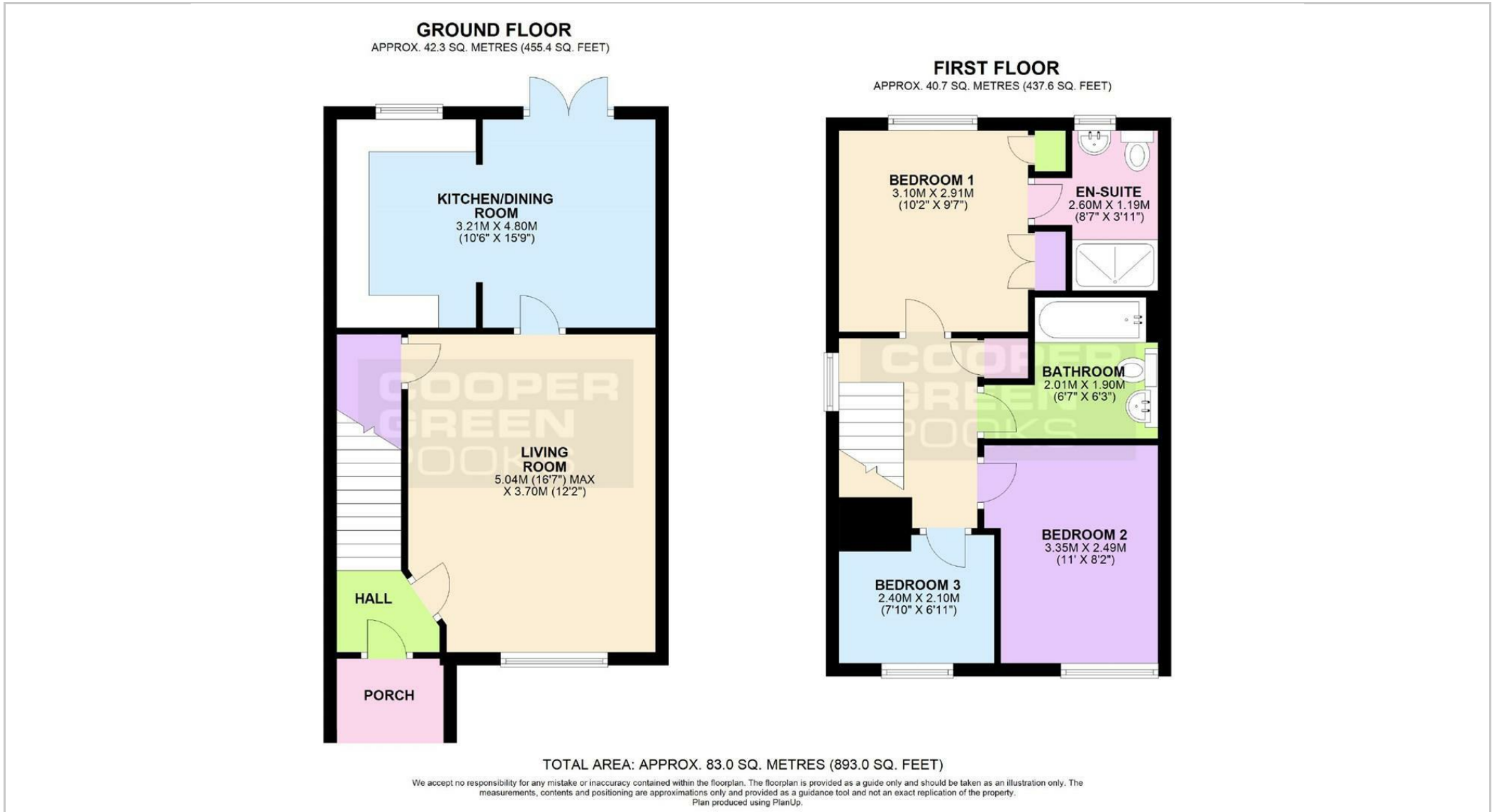
Unfurnished

Council Tax Band: B

Available: 21st May 2026

EPC: C

Floor Plans



These particulars, whilst believed to be accurate are set out as a general outline only for guidance and do not constitute any part of an offer or contract. Intending purchasers should not rely on them as statements of representation of fact, but must satisfy themselves by inspection or otherwise as to their accuracy. No person in this firm's employment has the authority to make or give any representation or warranty in respect of the property.