



## Berkeley Street, W1J

£4,766 Per calendar month

A charming two double bedroom apartment on the second floor of a period building just south of Berkeley Square.

Berkeley Street runs south from Berkeley Square to Piccadilly and is ideal for Green Park tube station on the Piccadilly, Victoria and Jubilee lines. Piccadilly Circus and the amenities and attractions of the West End are close by.

### Features

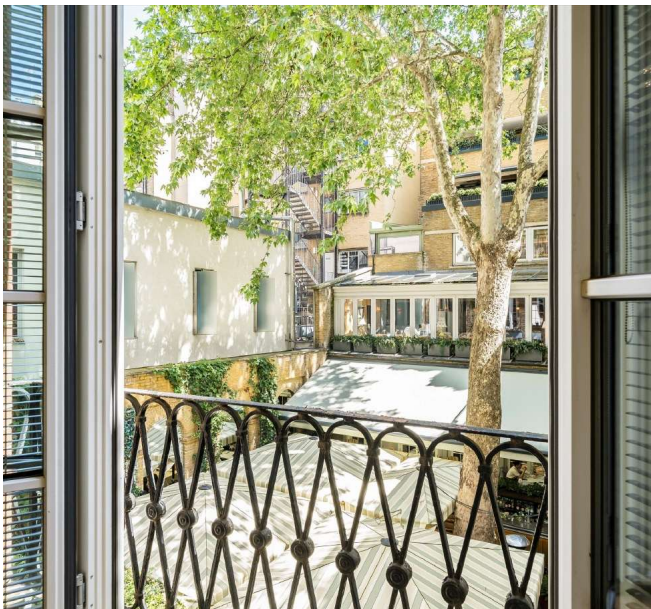
- Two Double Bedrooms
- Wooden Flooring
- Day Porter
- Lift Access
- High Ceilings
- Excellent Location



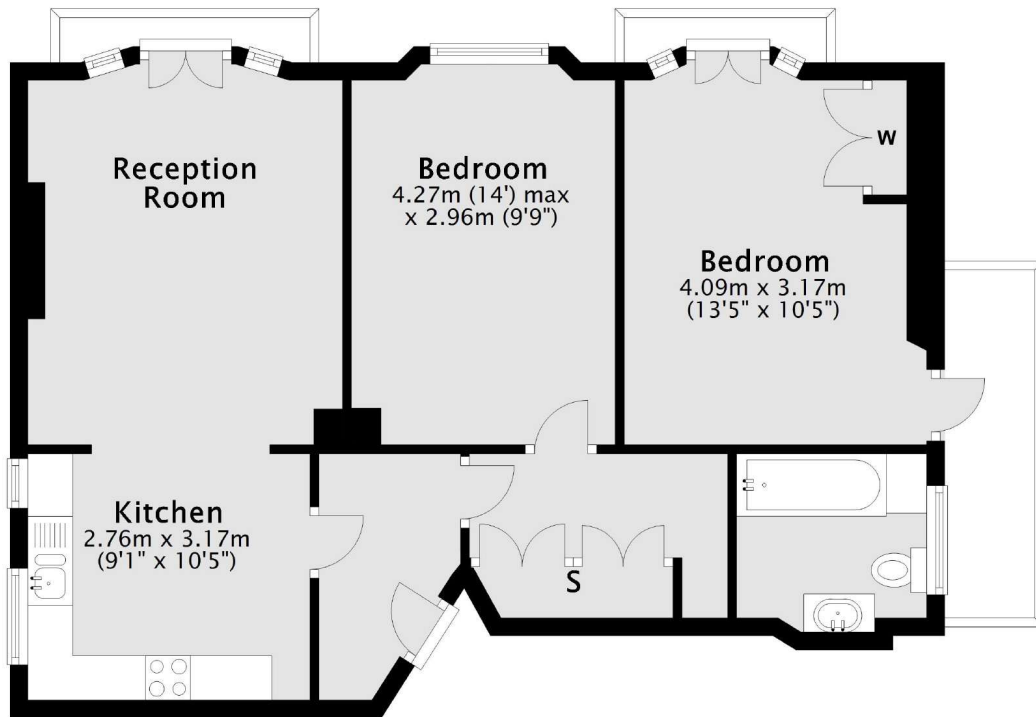
## Berkeley Street, W1J

This lateral apartment of 703 sq ft is well presented throughout with lift access and a porter.

Comprising a characterful, bright reception room with floor to ceiling French windows leading onto a modern kitchen space. The front facing master bedroom with built in wardrobes and two large sash windows with light pouring through the space. The secondary double bedroom also benefits from storage space.



Berkeley Street,  
London, W1J



### First Floor

Total area: approx. 65.4 sq. metres (703.8 sq. feet)