



Stane Grove, SW9

£750,000

Dexters



Stane Grove, SW9

A beautifully presented two double bedroom, two bathroom penthouse apartment with an impressive wrap around balcony offering far reaching views across London. The property comprises a spacious open plan reception room with a modern fitted kitchen and direct access onto the substantial private balcony, creating an ideal space for entertaining. There are two generous double bedrooms, both with en-suite bathrooms and a further separate WC.

Stane Grove is ideally located just a short walk from the many shops, restaurants and bars of Clapham High Street and Clapham Old Town. Clapham North Station (Northern Line) and Stockwell Station (Victoria Line) are both within easy reach.

Features

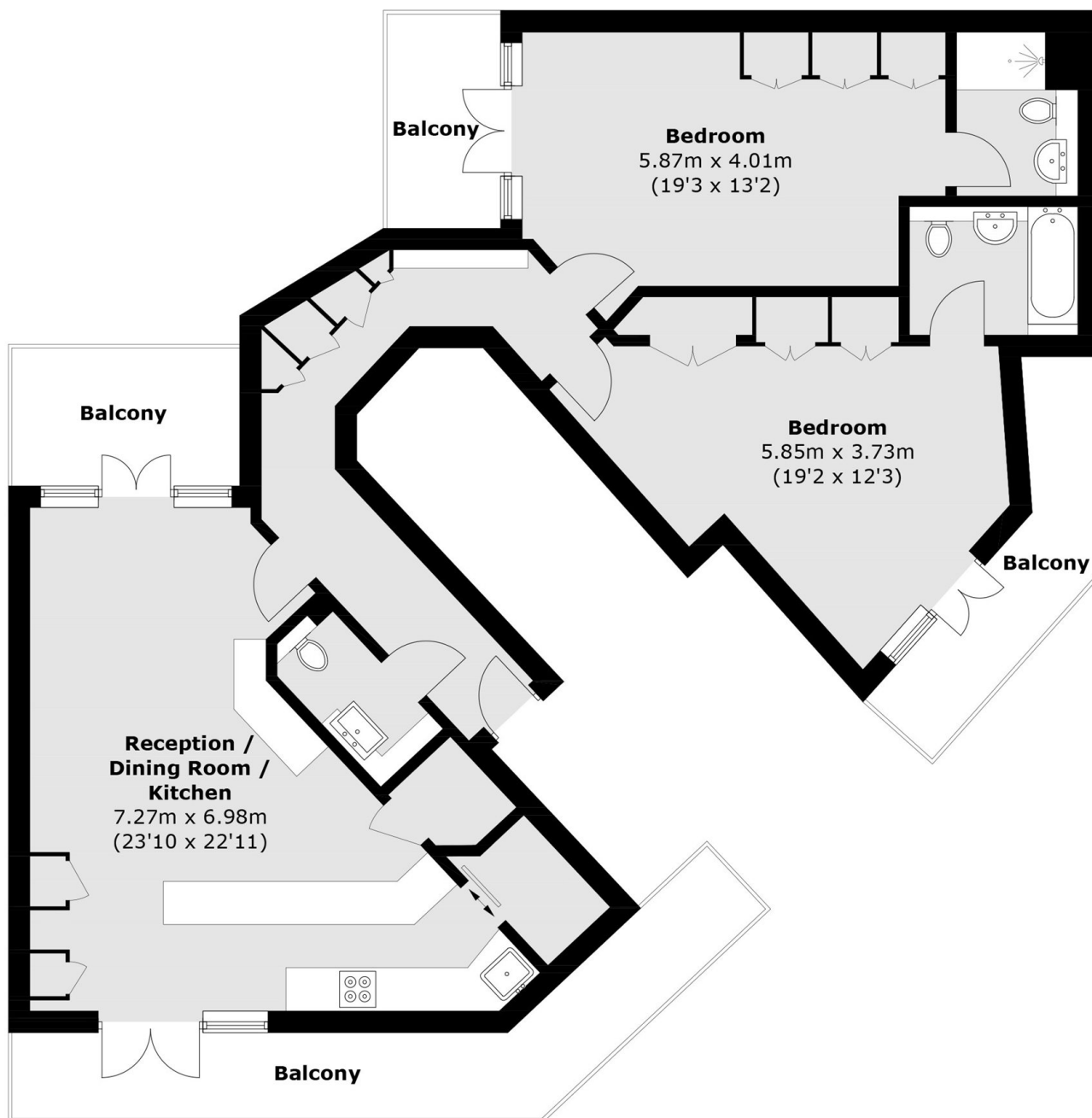
- Modern Apartment
- Open-Plan Reception Room
- Integrated Kitchen
- Two Double Bedroom
- Two Bathrooms
- Wrap Around Balcony







Stane Grove, London, SW9



Total area (approx.): 104.3 sq. m (1,122.7 sq. ft)
Balcony: 30.7 sq. m (330.4 sq. ft)