



# Glasshouse Gardens, London E20

Offers In Excess Of £600,000 Leasehold









## Description

Positioned within the sought-after Glasshouse Gardens development in the heart of Stratford's regenerated landscape, this sophisticated two-bedroom apartment offers contemporary living with unparalleled convenience. The building's modern architecture and professional management create an atmosphere of refined urban living, complemented by meticulously maintained landscaped grounds that provide a peaceful retreat from city life.

The apartment's standout feature is its generous private balcony, perfectly oriented to capture south-westerly light throughout the day while offering spectacular views across the Olympic stadium and London's iconic skyline. This outdoor sanctuary becomes an extension of your living space, ideal for morning coffee or evening entertaining while watching the city transform from day to night. The interior benefits from abundant natural light and thoughtful design, creating bright, airy spaces perfect for both relaxation and hosting.

Residents enjoy an exceptional lifestyle with 24-hour concierge services ensuring security and convenience, while the private gymnasium eliminates the need for external memberships.

- 1st floor
- 2 bedroom
- 2 bathroom
- Private balcony with fantastic views
- Residential Gym
- 24hr Concierge service
- Sought after location
- 0.5 mile from Stratford International Station
- Approx. 797 sq ft (74 sq m.)
- EPC: B

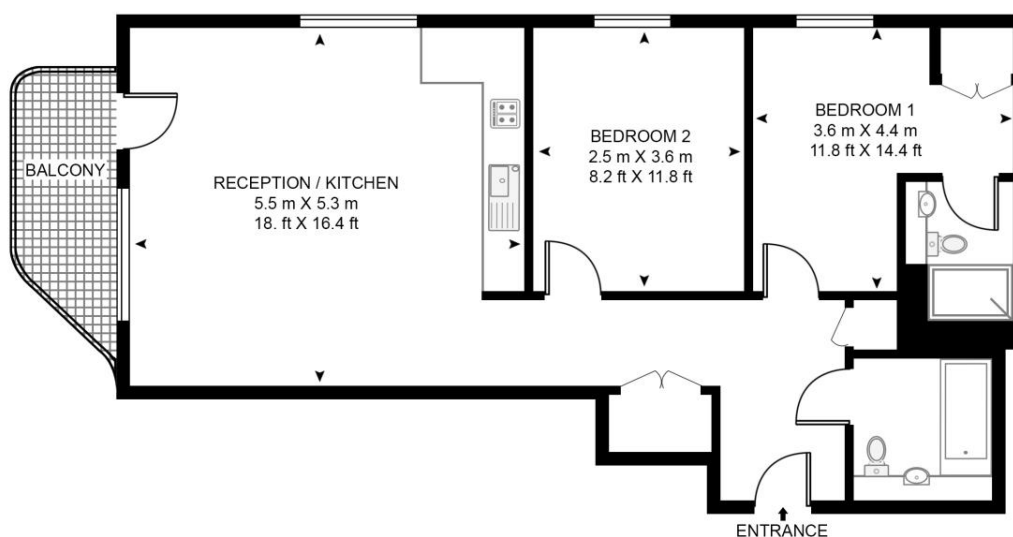


# Floorplan

797 sq ft | 74 sq m

## LANTANA HEIGHTS

APPROXIMATE GROSS INTERNAL FLOOR AREA 777 SQ.FT (72.2 SQ.M)



This floor plan has been defined by the RICS Code of Measurement. This floor plan and all others are for approximate representative purposes only and upon usage is agreed to as such by the client.

WWW: [hdvirtualart.com](http://hdvirtualart.com) | TEL: 0203.974.1567 | EMAIL: [info@hdvirtualart.com](mailto:info@hdvirtualart.com)

Stratford  
5 Station Street,  
London E15 1DA  
+4420 3147 1500  
[Lettingsstratford@eu.jll.com](mailto:Lettingsstratford@eu.jll.com)

*Urban living, your way.*

[jll.co.uk/residential](http://jll.co.uk/residential)

© 2019 Jones Lang LaSalle IP, Inc. All rights reserved. All information contained herein is from sources deemed reliable; however, no representation or warranty is made to the accuracy thereof.

