

Aldreds
Estate Agents



7 Rogers Close

Hopton, Great Yarmouth, NR31 9RS

£255,000



7 Rogers Close

Hopton, Great Yarmouth, NR31

This well presented semi-detached house stands on a wider corner plot with a westerly facing rear garden, driveway and garage. The accommodation includes entrance porch, hall, well proportioned lounge, kitchen, 3 bedrooms and bathroom with a shower above the bath. In addition, the property has the benefit of gas central heating and UPVC double glazed windows.

Entrance Porch

UPVC entrance door with double glazed panel. Inset ceiling spotlight. UPVC double glazed windows to front and side aspects.

Entrance Hall

UPVC door with double glazed panel and UPVC double glazed side panel. Laminate floor. Radiator. Dado rail. Low door to a built-in under stairs storage cupboard. Stairs to first floor landing.

Lounge

15'7" x 12'7" (4.75m x 3.84m)

Laminate floor. Radiator. Dado rail. Telephone point. Decorative stone fireplace. UPVC double glazed windows either side of UPVC double glazed doors to the rear garden.

Kitchen

11'8" x 9'3" (3.56m x 2.82m)

Worktops with cupboards and drawers below. One and a half bowl single drainer sink with mixer tap. Tiled splashbacks. Matching wall cupboards. Space for an electric cooker with a stainless steel extractor above. Utility spaces below worktops with plumbing for washing machine and dishwasher. Space fridge/freezer. Tiled floor. UPVC double glazed window to front aspect. UPVC door with double glazed panel to side.

First Floor

Landing

Dado rail. Built-in airing cupboard with slatted shelves and a wall mounted gas fired combination boiler. Loft access hatch.

Bedroom 1

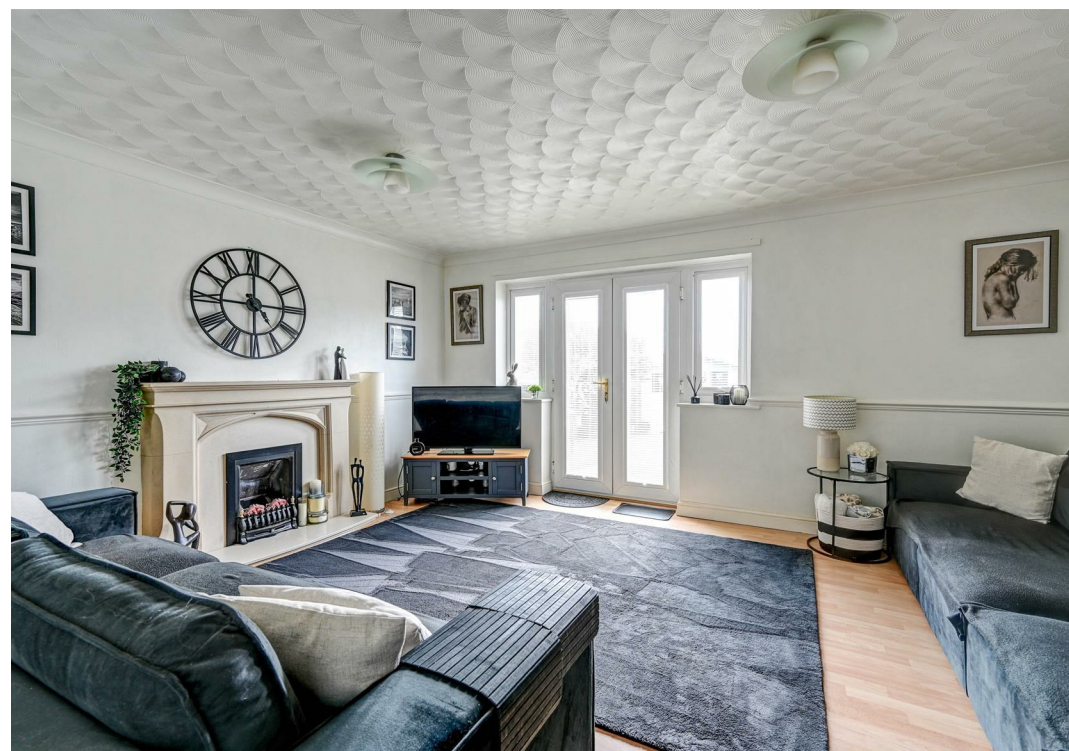
14'11" x 8'5" (4.55m x 2.57m)

Radiator. Smooth plaster ceiling. Coving. Inset ceiling spotlights. UPVC double glazed window to rear aspect.

Bedroom 2

9'6" x 8'5" (2.90m x 2.57m)

Radiator. UPVC double glazed window to front aspect.





Bedroom 3

8'5" x 6'9" (2.57m x 2.06m)

Radiator. UPVC double glazed window to rear aspect.

Bathroom

6'9" x 5'5" (2.06m x 1.65m)

Fully tiled walls and a white suite comprising bath with a mixer shower, shower attachment and rainfall fitting above. Pedestal wash basin with mixer tap. WC. Chrome towel radiator. Laminate floor. Extractor. Smooth plaster ceiling. UPVC double glazed window to front.

Outside

A driveway beyond the rear boundary leads to a semi-detached single garage with up-and-over door. The rear garden is part walled, westerly facing and laid to lawn with a patio area to the immediate rear of the property and a further paved area to the side of the house.

Tenure

Freehold.

Services

Mains water, gas, electricity and drainage.

Council Tax

Great Yarmouth Borough - Band B

Location

Hopton is a coastal village situated 2½ miles to the South of Gorleston and 5 miles North of Lowestoft * There are local shops * A Primary School for the 5 – 11 year old * Leisure facilities * Beach and bus services to the main towns.

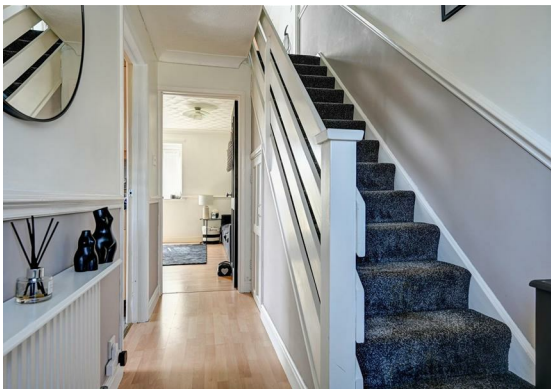
Directions

From Gorleston, heading towards Lowestoft on the dual carriageway, take the first exit off the roundabout at Hopton and then turn left onto Lowestoft Road. Follow the road past Station Road and the playing field and turn right onto Noel Close which leads into Roger's Close. Continue past Flowerday Close on the left and the property will be found on the left hand side on the corner.

what3words

///treatment.promising.maternal

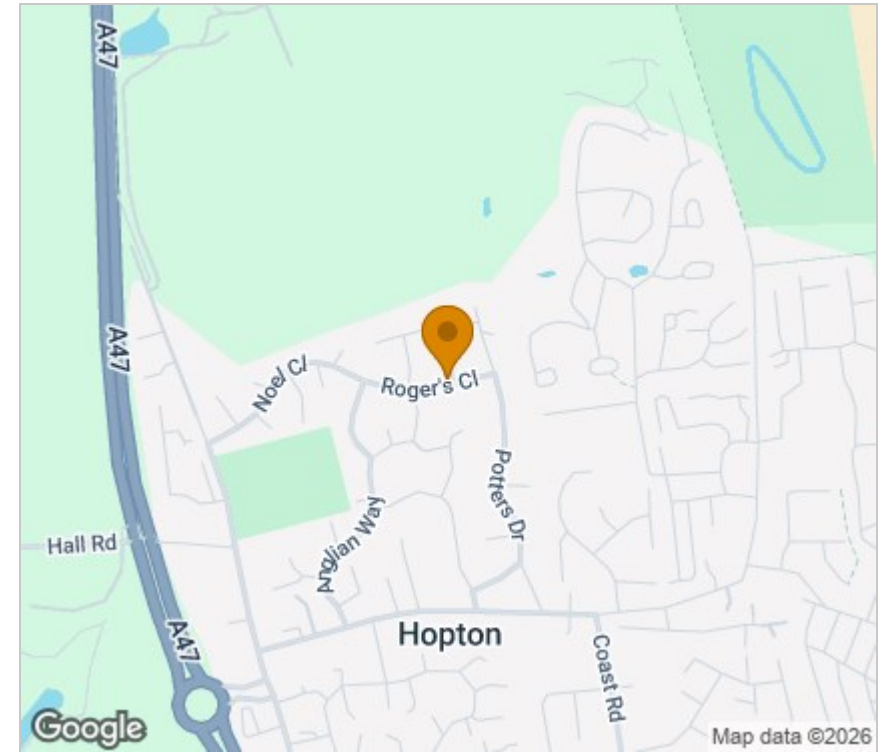
Ref: G18560/07/26



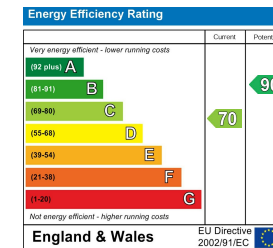
Floor Plan



Area Map



Energy Efficiency Graph



Viewing

Please contact our Aldreds Gorleston Office on 01493 664600 if you wish to arrange a viewing appointment for this property or require further information.

Disclaimer

These particulars are issued on an understanding that all negotiations shall be conducted through Messrs. Aldreds. Please note: Messrs. Aldreds for themselves and for the vendors or lessors of this property whose agents they are given notice that: 1. Particulars are set out as a general outline only for guidance of intending purchasers or lessees, and do not constitute nor constitute part of, an offer or contract. 2. All descriptions, dimensions, references to condition and necessary permissions for use and occupation, and other details are given without responsibility and any intending purchasers or tenants should not rely on them as statements or representations of fact but must satisfy themselves by inspection or otherwise as to the correctness of each of them. 3. No person in the employment of Messrs. Aldreds has any authority to make or give any representation or warranty whatever in relation to this property. 4. If you are proposing to visit the property and are travelling some distance please check with Aldreds on the issue of availability prior to travelling. 5. Aldreds Property Consultants and associated services may offer additional services to the prospective purchaser for which they will be entitled to receive a commission.

Aldreds are pleased to be working with Mortgage Advice Bureau. They're an award-winning mortgage broker with over 1,400 advisers across the UK, and have access to over 12,000 mortgage products from over 90 lenders. Aldreds Estate Agents Ltd receive a commission of £200 on each completed case. Your home may be repossessed if you do not keep up repayments on your mortgage. There may be a fee for mortgage advice. The actual amount you pay will depend upon your circumstances. The fee is up to 1%, but a typical fee is 0.3% of the amount borrowed. Mortgage Advice Bureau is a trading name of Mortgage Seeker Limited which is an appointed representative of Mortgage Advice Bureau Limited and Mortgage Advice Bureau (Derby) Limited which are authorised and regulated by the Financial Conduct Authority. Mortgage Seeker Limited Registered Office: Lovewell Blake, Sixty Six North Quay, Great Yarmouth, Norfolk, NR30 1HE. Registered in England Number: 03721415. 6. Potential purchasers should check with their providers that the broadband and mobile phone coverage they would require is available.

149 High Street, Gorleston, Norfolk, NR31 6RB

Tel: 01493 664600 Email: gorleston@aldreds.co.uk <https://www.aldreds.co.uk/>

Registered in England Reg. No. 08945751 Registered Office: 17 Hall Quay, Great Yarmouth, Norfolk NR30 1HJ

Directors: Mark Duffield B.S.c. FRICS. Dan Crawley MNAEA Paul Lambert MNAEA