



Connells

Cedar Road
Sturry Canterbury

Cedar Road
Sturry Canterbury CT2 0JQ

for sale
£425,000 to £450,000



Property Description

Connells are delighted to bring to market this stunning 4 bed semi detached bungalow located in the popular area of Sturry, Canterbury.

This 135 square meter property offers a perfect blend on comfort, convenience and modern living making it ideal for as a family home. As you enter the property, you are greeted by a wonderfully spacious hallway, which leads into a living room, study/bedroom, downstairs bathroom and kitchen/diner. Upstairs you will find 4 spacious double bedrooms and modern bathroom. Leading out from the kitchen is a conservatory which opens out to a large garden with decking. On the decking is a seating area, hot tub and outdoor kitchen. At the front of the property is a garage, large driveway with enough of space for at least 4 vehicles as well as a front garden.

Call Connells now to arrange your viewing!

Entrance Hall

11' 1" x 12' 1" (3.38m x 3.68m)

Study/Bedroom

11' 4" x 7' 4" (3.45m x 2.24m)

Lounge

17' 2" x 10' 8" (5.23m x 3.25m)

Kitchen

22' 5" x 16' 3" (6.83m x 4.95m)

Bathroom (downstairs)

4' 9" x 8' (1.45m x 2.44m)

Landing

8' 2" x 3' 3" (2.49m x 0.99m)

Bedroom One

13' 4" x 11' 5" (4.06m x 3.48m)

Bedroom Two

12' 7" x 10' 2" (3.84m x 3.10m)

Bedroom Three

12' 9" x 9' 5" (3.89m x 2.87m)

Bedroom Four

9' 7" x 9' 5" (2.92m x 2.87m)

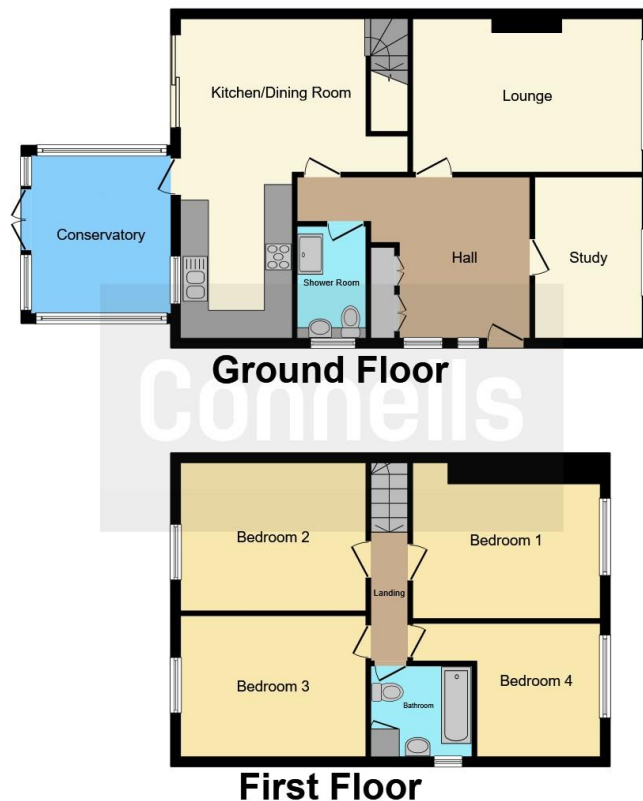
Bathroom

7' x 7' 2" (2.13m x 2.18m)









This floor plan is for illustrative purposes only. It is not drawn to scale. Any measurements, floor areas (including any total floor area), openings and orientation are approximate. No details are guaranteed, they cannot be relied upon for any purpose and they do not form part of any agreement. No liability is taken for any error, omission or misstatement. A party must rely upon its own inspection(s). Powered by www.focalagent.com

To view this property please contact Connells on

T 01227 764 720
E canterbury@connells.co.uk

29-30 Watling Street
 CANTERBURY CT1 2UD

EPC Rating: C Council Tax
 Band: C

Tenure: Freehold

view this property online connells.co.uk/Property/CBY406318



1. MONEY LAUNDERING REGULATIONS Intending purchasers will be asked to produce identification documentation at a later stage and we would ask for your co-operation in order that there will be no delay in agreeing the sale. 2. These particulars do not constitute part or all of an offer or contract. 3. The measurements indicated are supplied for guidance only and as such must be considered incorrect. Potential buyers are advised to recheck measurements before committing to any expense. 4. We have not tested any apparatus, equipment, fixtures, fittings or services and it is in the buyers interest to check the working condition of any appliances.

Connells Residential is registered in England and Wales under company number 1489613, Registered Office is Cumbria House, 16-20 Hockliffe Street, Leighton Buzzard, Bedfordshire, LU7 1GN. VAT Registration Number is 500 2481 05.

See all our properties at www.connells.co.uk | www.rightmove.co.uk | www.zoopla.co.uk

Property Ref: CBY406318 - 0011