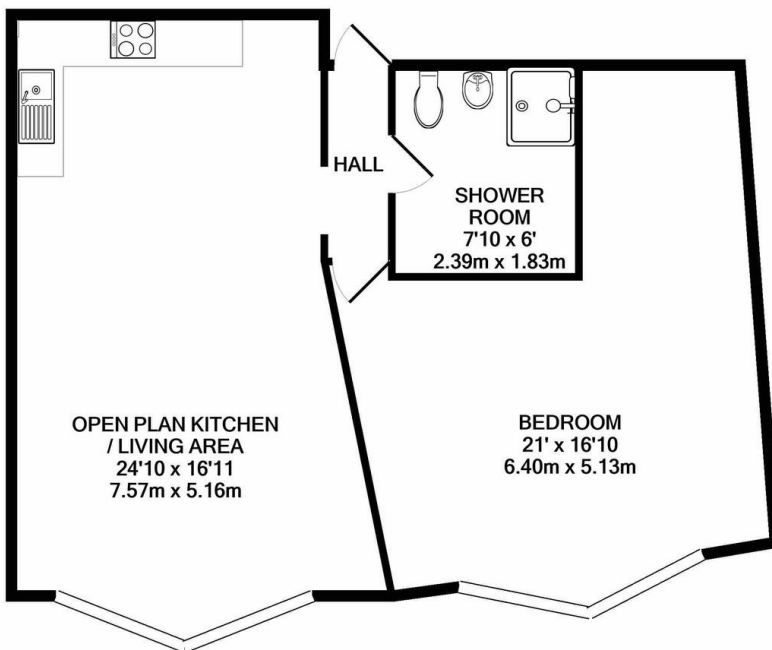




TO LET

1 Bed Apartment in Leicester Road, Wigston LE18 1NR
£750 pcm

First floor apartment available to let in the centre of Wigston. Offered unfurnished, the property comprises secure ground floor entry, spacious living / kitchen area, large bedroom and shower room. The property benefits from modern attractive décor throughout, double glazing and gas central heating and hob. An absolute gem of a property.



PHILLIPS GEORGE LTD

TOTAL APPROX. FLOOR AREA 759 SQ.FT. (70.5 SQ.M.)

Whilst every attempt has been made to ensure the accuracy of the floor plan contained here, measurements of doors, windows, rooms and any other items are approximate and no responsibility is taken for any error, omission, or mis-statement. This plan is for illustrative purposes only and should be used as such by any prospective purchaser. The services, systems and appliances shown have not been tested and no guarantee as to their operability or efficiency can be given

Made with Metropix ©2021

Agents Note: Whilst every care has been taken to prepare these sales particulars, they are for guidance purposes only. All measurements are approximate and for general guidance purposes only and whilst every care has been taken to ensure their accuracy, they should not be relied upon and potential buyers are advised to recheck the measurements.

Energy Efficiency Rating		Current	Potential
Very energy efficient - lower running costs			
(92-100)	A		
(81-91)	B		
(69-80)	C		
(55-68)	D	64	73
(39-54)	E		
(21-38)	F		
(1-20)	G		
Not energy efficient - higher running costs			
England, Scotland & Wales		EU Directive 2002/91/EC	

Address:
Leicester Road, # 14, Wilec
Reference:
PG1

- Modern Apartment
- First Floor
- Very Spacious Throughout
- Open Plan Kitchen / Living Area
- Spacious Bedroom
- Contemporary Decor
- Intercom Entry System
- Town Centre Location

