



## Flat 8 Hulme Place London

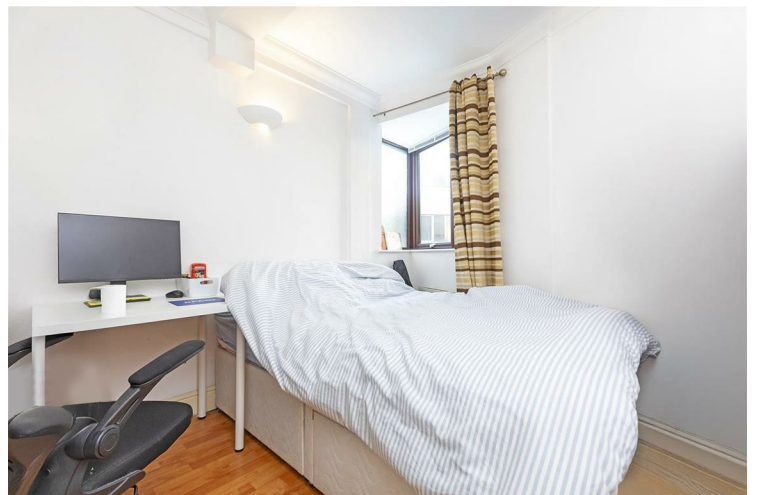
**£500,000**  
**LEASEHOLD**

LEONARD LEESE present to market this superbly located, two double bedroom two bathroom apartment set within a private gated development. The property offers good space and comprises two spacious double bedrooms, two bathrooms (one en-suite) and an open plan lounge with fully fitted kitchen. The apartment is available in fantastic condition with wood floors and modern fittings. Borough tube is literally 1 mins walk away and London Bridge 5 mins, offering superb transport options. Property comes with secure parking.

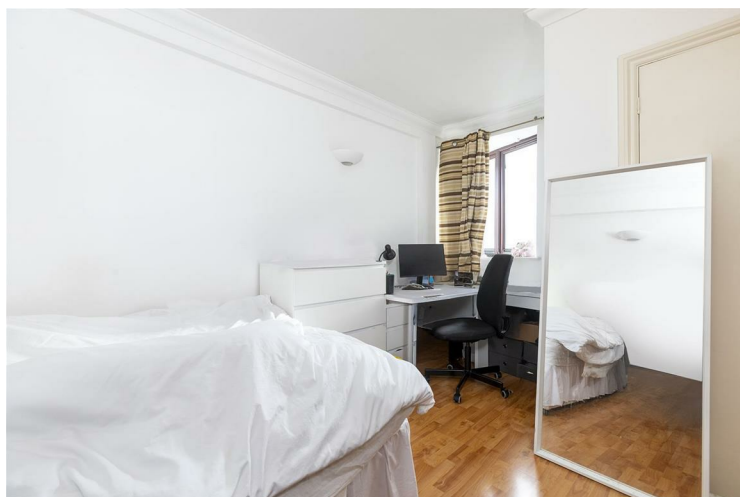
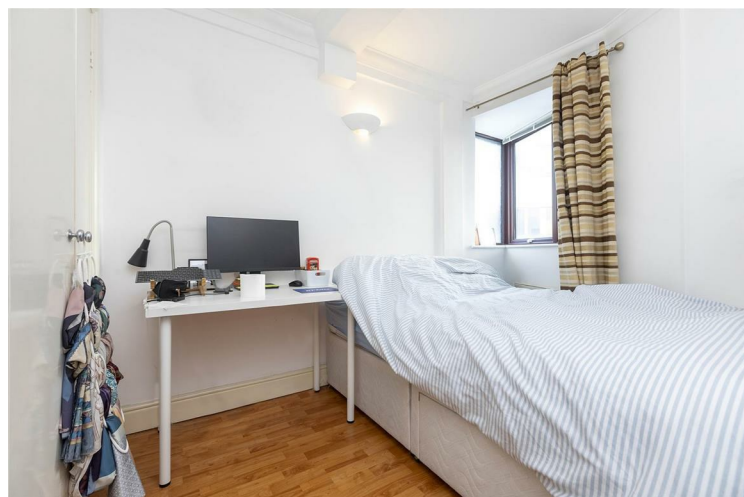
Call the sales department to reserve a viewing on 0207 015 1360.



- Two Double Bedrooms • Two Bathrooms (one en-suite) • Wooden Flooring Throughout • Gated Development



• Borough High St SE1 • Secure Private Parking • Please Contact Us On Whatsapp -  
07418371565





TOTAL APPROX. FLOOR AREA 633 SQ.FT. (58.8 SQ.M.)  
 Measurements are approximate. Not to scale. Illustrative purposes only  
 Made with Metropix ©2011



Energy Efficiency Rating		
	Current	Potential
Very energy efficient - lower running costs		
(92 plus) <b>A</b>		
(81-91) <b>B</b>		
(69-80) <b>C</b>		
(55-68) <b>D</b>	60	62
(39-54) <b>E</b>		
(21-38) <b>F</b>		
(1-20) <b>G</b>		
Not energy efficient - higher running costs		
<b>England &amp; Wales</b>	EU Directive 2002/91/EC	

Agents Note: Whilst every care has been taken to prepare these particulars, they are for guidance purposes only. All measurements are approximate and are for general guidance purposes only and whilst every care has been taken to ensure their accuracy, they should not be relied upon and potential buyers/tenants are advised to recheck the measurements

Borough Lettings  
 230 Borough High Street  
 London  
 SE1 1JX

020 7015 1360  
 enquiries@leonardleese.com  
 www.leonardleese.com

