



197 Walkley Bank Road, Walkley, Sheffield, S6 5AN



197 Walkley Bank Road

Walkley

Asking Price

£270,000

Beautiful Two Bedroom Detached Bungalow with Lovely Views

This attractive two bedroom detached bungalow enjoys an enviable position with wonderful views across Rivelin and Loxley, while overlooking the Morley Street Allotments to the front.

The property offers light and well-planned accommodation throughout, including a spacious lounge with bay window, a modern fitted kitchen, and two comfortable bedrooms, the second bedroom having the benefit of its own en-suite shower room. A further bathroom is also provided.

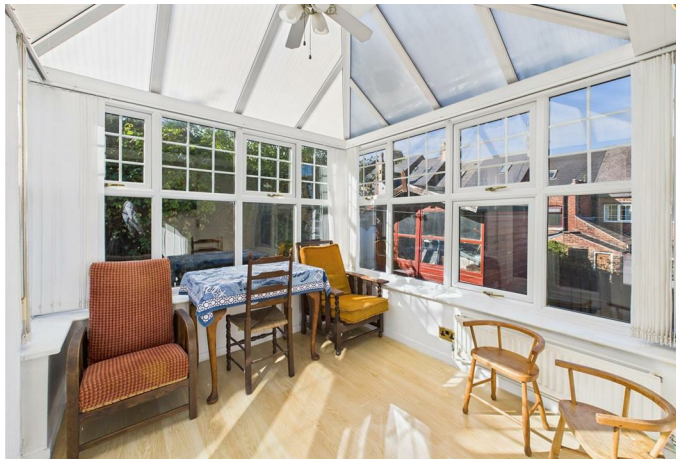
Adding to its versatility, the bungalow also features a useful office/study, a utility room, and a delightful conservatory/sunroom which leads directly out to the rear. The low maintenance rear garden provides a private and relaxing space, perfect for enjoying the outdoors with minimal upkeep.

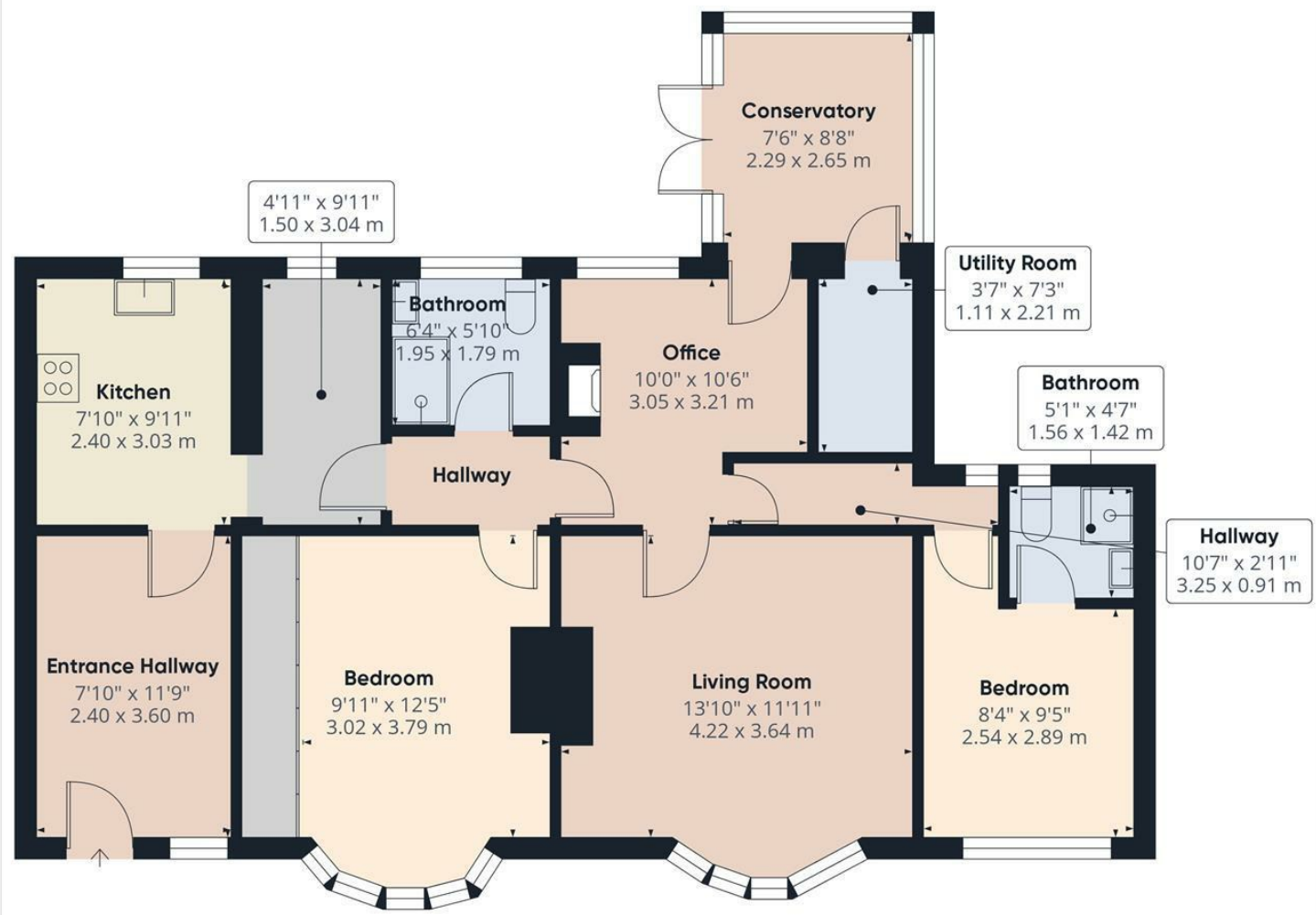
With its desirable setting, flexible living spaces, and beautiful outlook, this freehold bungalow is ideal for those looking to downsize or enjoy single-level living in a peaceful yet convenient location.



- Two bedroom detached bungalow
- FREEHOLD Tenure
- Lovely views towards Rivelin and Loxley
- Beautiful green spaces nearby
- Sunroom/Conservatory
- Utility Room
- Modern fitted kitchen
- en-suite to one of the bedrooms







Approximate total area^m
942 ft²
87.4 m²

(1) Excluding balconies and terraces

Calculations reference the RICS IPMS 3C standard. Measurements are approximate and not to scale. This floor plan is intended for illustration only.

GIRAFFE360

While we endeavour to make our sales particulars fair, accurate and reliable, they are only a general guide to the property and, accordingly, if there is any point, which is of particular importance to you, please contact the relevant office. The Agents have not tested any apparatus, equipment, fittings or services and so cannot verify they are in working order. The buyer is advised to obtain verification. Please note all the measurement details are approximate and should not be relied upon as exact. All plans, floor plans and maps are for guidance purposes only and are not to scale. Under no circumstances should they be relied upon as exact or for use in planning carpets and other such fixtures, fittings or furnishings. YOUR HOME IS AT RISK IF YOU DO NOT KEEP UP REPAYMENTS ON A MORTGAGE OR OTHER LOAN SECURED ON IT. 'A Life Assurance policy may be requested.' 'Written Quotations of credit terms available on request.'

Banner Cross
T: 0114 268 3241
E: bannercross@saxtonmee.co.uk
www.saxtonmee.co.uk

Hathersage
T: 01433 650009
E: hathersage@saxtonmee.co.uk

Bakewell
T: 01629 815307
E: bakewell@saxtonmee.co.uk

Matlock
T: 01629 828250
E: matlock@saxtonmee.co.uk