



## Wards Wharf Approach, E16

£2,600 Per calendar month

A large three bedroom apartment on a mid-floor of this popular riverside development spanning over 1,000sqft. This bright apartment has an open plan reception, river views, a private terrace and parking available by negotiation.

### Features

- Three Bedrooms
- Two Bathrooms
- Over 1,000sqft
- River Views
- Concierge
- Residents Gym

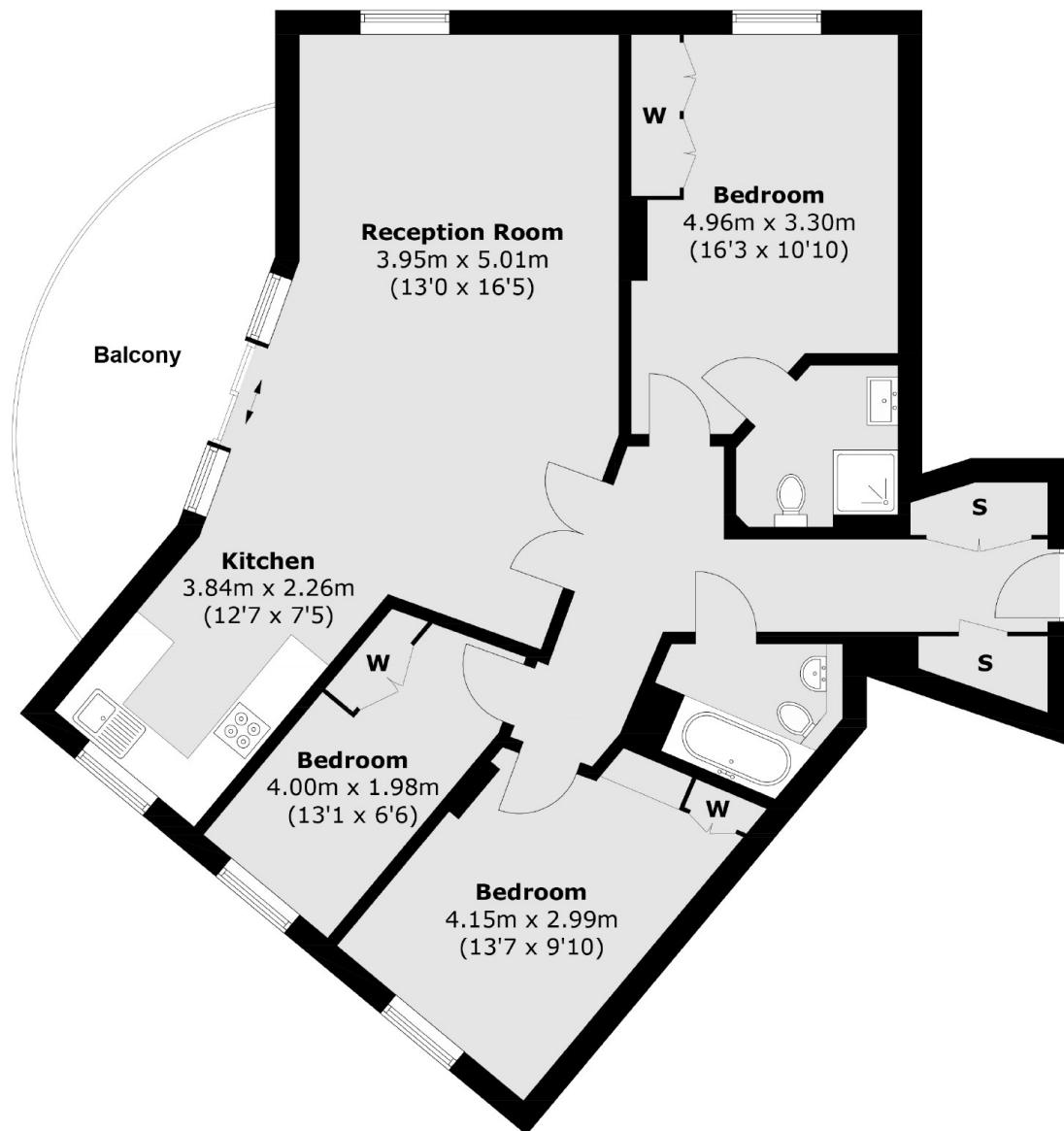
Wards Wharf Approach is moments from an array of local amenities. The shops and restaurants of Canary Wharf are also easily accessible via the DLR link at Pontoon Docks.



**Wards Wharf Approach, E16**



# Wards Wharf Approach, London, E16



Total area (approx.): 96.5 sq. m (1038.7 sq. ft)  
Balcony (approx.): 12.6 sq. m (135.6 sq. ft)