



A well presented bright and spacious three bedroom ground floor flat.
Elm Park Court, Pinner, Middlesex HA5 3LL

ROBSONS

Asking Price: £2,200 pcm

A well presented bright and spacious three bedroom ground floor flat.

Elm Park Court, Pinner, Middlesex HA5 3LL

• GROUND FLOOR • FITTED KITCHEN • LIVING/DINING ROOM • TWO DOUBLE BEDROOMS • ONE SINGLE BEDROOM • FAMILY BATHROOM • GAS CENTRAL HEATING • OFF STREET PARKING • UNFURNISHED

Description

A well presented bright and spacious three bedroom ground floor flat. Located in a much sought after development conveniently situated to provide access to Pinner Metropolitan Line station and a good range of local shopping facilities and popular restaurants.

** An advance reservation payment of one weeks rent is required to secure the property **

Location

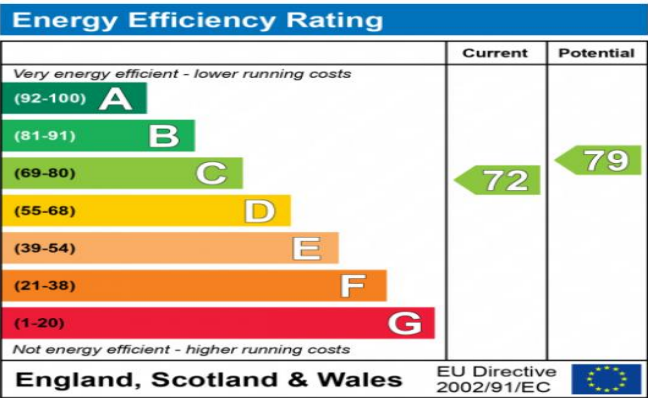
Pinner offers a wide choice of boutique shops, restaurants, coffee houses and popular supermarkets. Transport facilities include local bus links and the Metropolitan Line at Pinner station, providing a fast and frequent service into the heart of Central London and beyond. The area is well served for primary and secondary schooling, children's parks/playgrounds and recreational facilities.





Additional Information

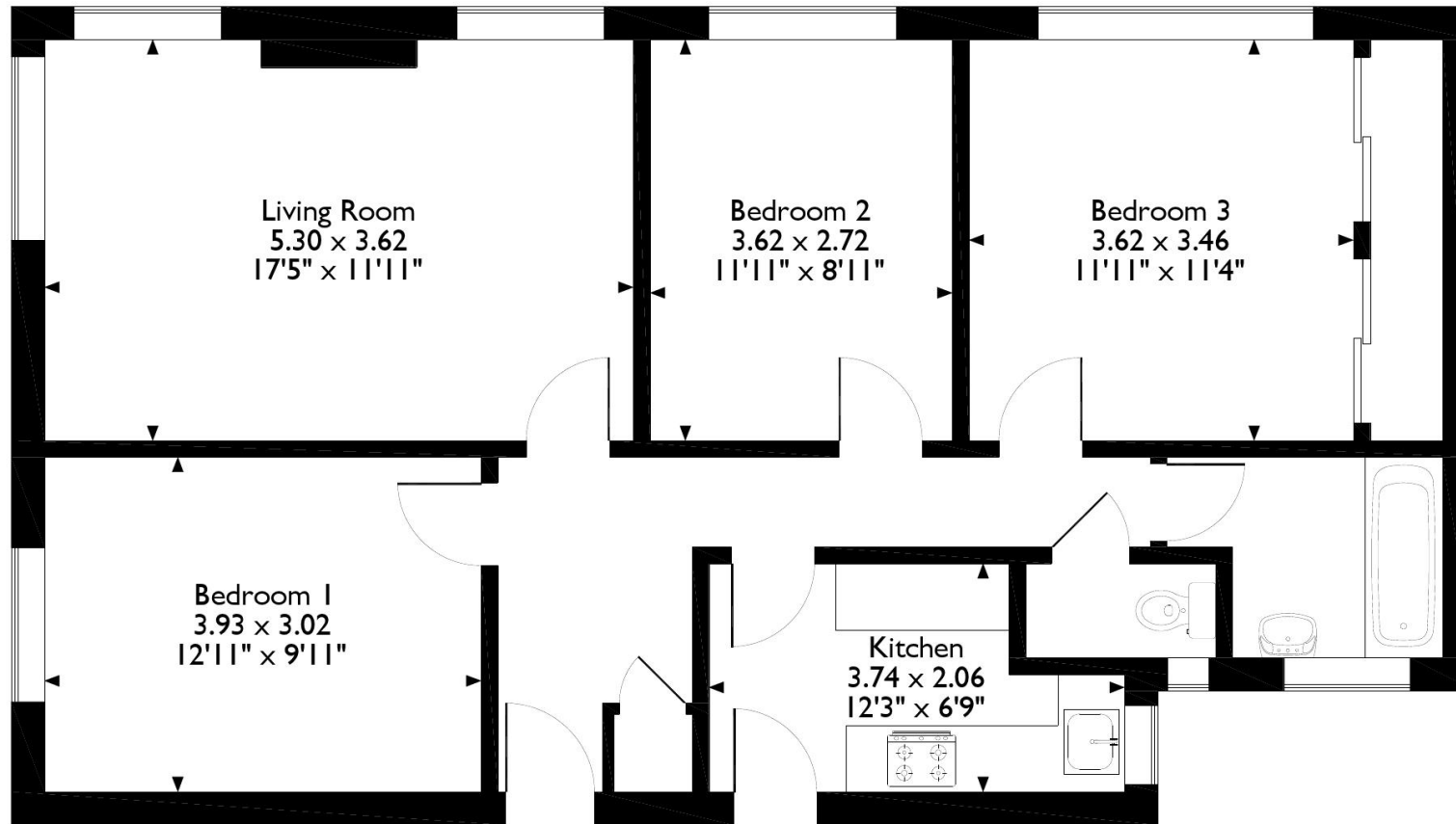
- Local Authority: Harrow
- Council Tax Band: E
- Deposit Amount: £2,538.00
- Reservation Payment: One weeks rent
- Energy Efficiency Rating: Band C
- Available Date: 26/06/2026



The energy efficiency rating is a measure of the overall efficiency of a home. The higher the rating the more energy efficient the home is and the lower the fuel bills will be.



Elm Park Court, Flat 71, Elm Park Road, Pinner
Approximate Gross Internal Area
82 Sq M/882 Sq Ft



Ground Floor

Please note that the location of doors, windows and other items are approximate and this floorplan is to be used for illustrative purposes only. Unauthorized reproduction is prohibited.



REGISTERED OFFICE 2-4 PACKHORSE ROAD, GERRARDS CROSS, BUCKINGHAMSHIRE, ENGLAND, SL9 7QE. COMPANY NO. 07557114. VAT NO. GB211239453