



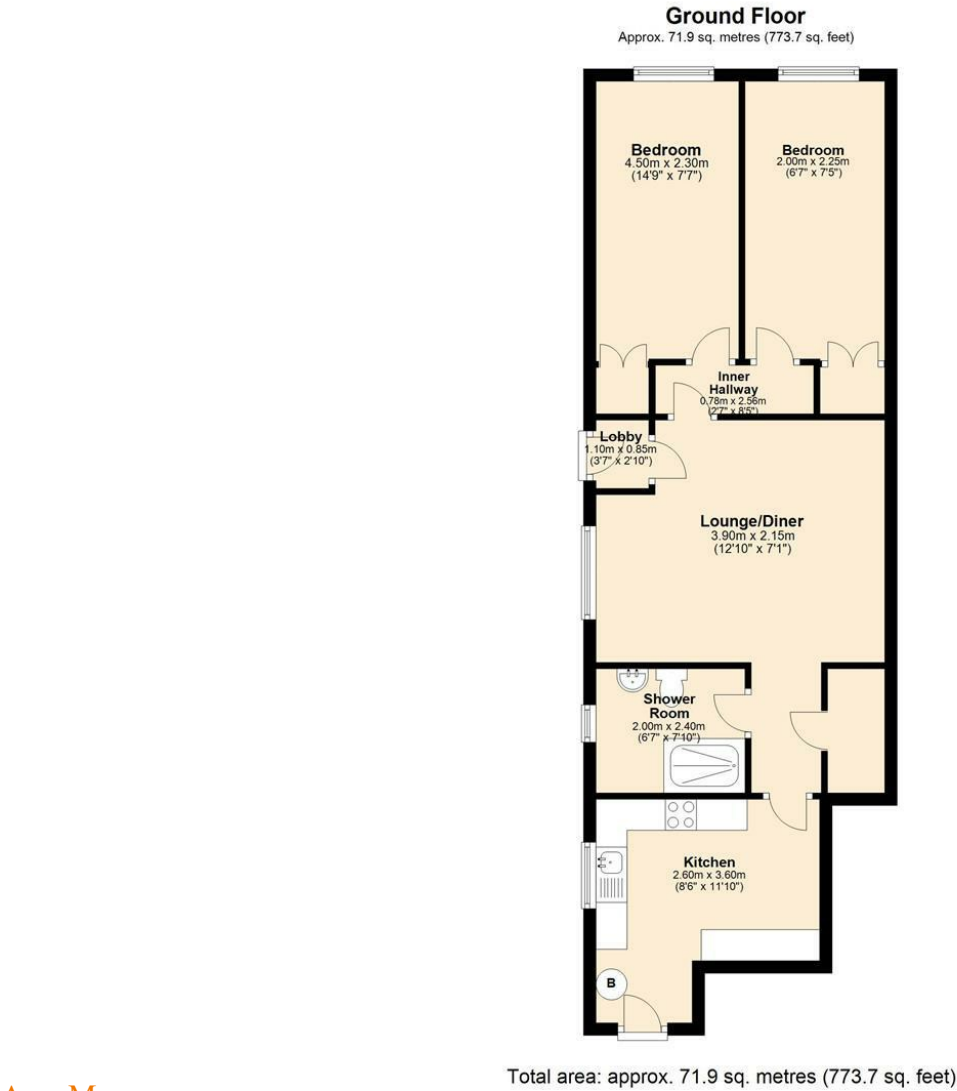
30 Stratford Road, Newcastle Upon Tyne, NE6 5PD

£950 Per Month

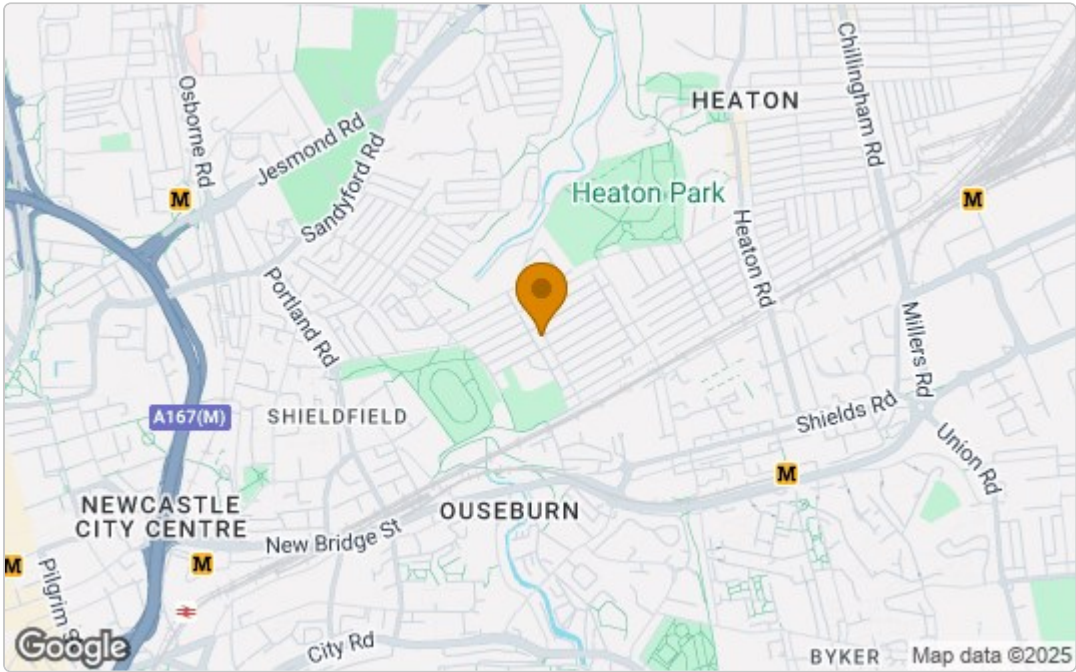
Available January 2026 | £950 per month | Hive Estates presents this spacious 2 bedroom flat in Heaton, with two equal sized double bedrooms and laminate flooring throughout. There's a large living and dining space, with a modern kitchen and fitted white goods and appliances. The bathroom is fully tiled and there's a large shower with heated towel radiator.

The property is on Stratford Road, overlooking Warwick Street and is walking distance to the City Centre with the Number 1 bus route just outside. It has double glazing and gas central heating and is perfect for students or professionals.

Floor Plan



Area Map



These particulars, whilst believed to be accurate are set out as a general outline only for guidance and do not constitute any part of an offer or contract. Intending purchasers should not rely on them as statements of representation of fact, but must satisfy themselves by inspection or otherwise as to their accuracy. No person in this firms employment has the authority to make or give any representation or warranty in respect of the property.

Energy Efficiency Graph

