



High Street | Northchurch | HP4 3QL
Offers In Excess Of £950,000



VIDEO. A striking Victorian home, offering almost 3,000 sq ft of beautifully proportioned accommodation, together with a detached double garage, ample parking and a superb south-west facing garden.

The house has a wonderful sense of balance throughout, with elegant rooms and a layout perfectly suited to both family living and entertaining. At the heart of the home is an impressive 26 ft sitting room, filled with natural light and complemented by a separate dining room, conservatory and kitchen overlooking the garden. A useful utility room, cellar and downstairs WC add further practicality to the ground floor.

Upstairs, there are five generous bedrooms arranged across a spacious first floor, including a superb principal bedroom with ensuite shower room and a further double bedroom with ensuite bathroom. A family shower room and separate WC provide great flexibility for modern family living.

Outside

The rear garden is a real highlight, enjoying a desirable south-westerly aspect. A detached double garage, useful outbuilding and generous driveway add to the appeal, offering a level of space rarely found in homes of this period.

Occupying a central position in Northchurch, the property is well placed for Berkhamsted's excellent schools, amenities and transport links, while retaining the character, scale and presence of a distinguished late Victorian home.

Tenure

Freehold.

Services

Gas fired boiler serving domestic hot water and heating. Mains water, electricity and drainage.

Council tax band G (Dacorum).

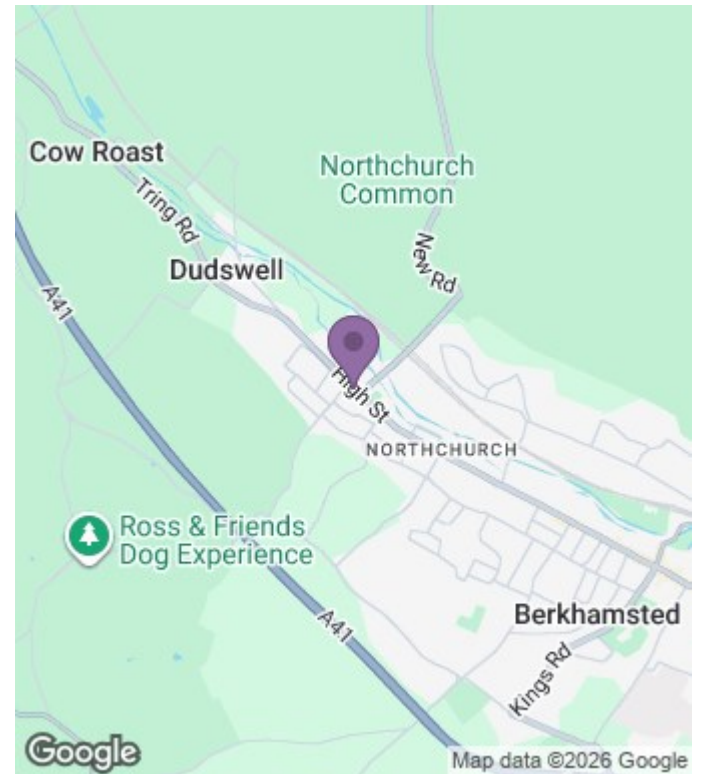
Situation

Northchurch village is just a short distance from the historic market town of Berkhamsted which offers excellent shopping, sporting and educational facilities. For commuters, Berkhamsted's mainline station provides a fast and frequent service to London (Euston) and the A41 bypass gives easy access to the M25 and M1.

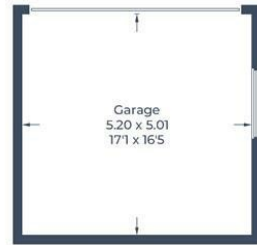




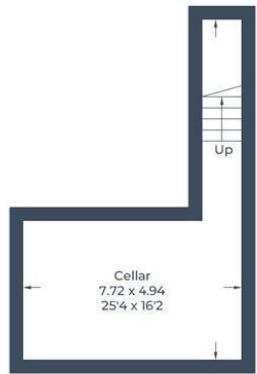
- 2,902 sq ft
- Five bedrooms
- Three bathrooms
- Three reception rooms
- Double garage & off street parking
- Generous rear garden
- Short walk to amenities



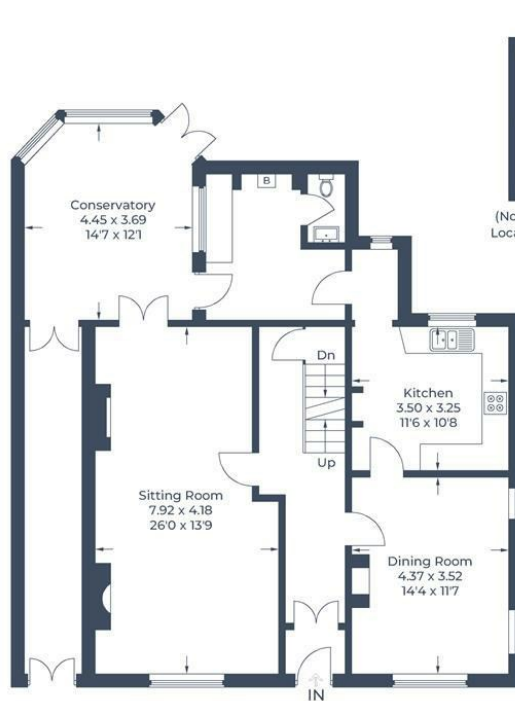
Approximate Gross Internal Area
 Cellar = 19.7 sq m / 212 sq ft
 Ground Floor = 117 sq m / 1,259 sq ft
 First Floor = 98.9 sq m / 1,064 sq ft
 Outbuildings = 34.1 sq m / 367 sq ft (Including Garage)
 Total = 269.7 sq m / 2,902 sq ft



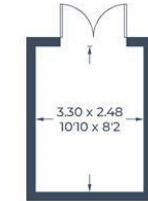
(Not Shown In Actual Location / Orientation)



Cellar



Ground Floor



(Not Shown In Actual Location / Orientation)

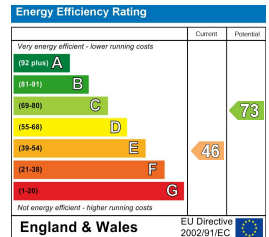


First Floor

Illustration for identification purposes only, measurements are approximate, not to scale.
 © CJ Property Marketing Produced for Oakleys

Council Tax Band: G
 Tenure: Freehold

These particulars are produced in good faith, are set out as a general guide only and do not constitute any part of a contract. None of the statements are to be relied on as a statement of fact. Areas, measurements or distances are given as a guide only. We have not tested any of the equipment, appliances or service to this property nor do we have knowledge of any defects.



Relax... you're with Oakleys

151 High Street, Berkhamsted, Hertfordshire, HP4 3HH | 01442 386555 | sales@oakleysestate.co.uk

