



Nutley Avenue, Saltdean Brighton BN2 8ED

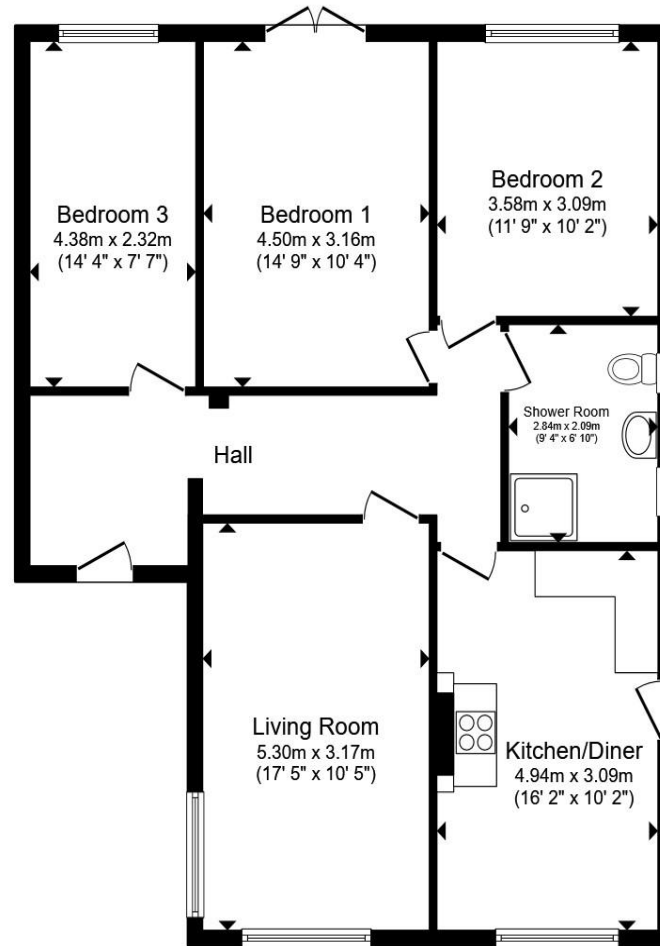
Stunning three bedroom linked detached home with sea views.

welcome to

Nutley Avenue, Saltdean Brighton

The property is located in the highly sought-after area of Saltdean. Upon entering the property there is a spacious hallway with painted original floorboards. The hallway leads to a spacious bright lounge featuring a focal fire place, shutters, original painted floorboards, and impressive sea views. The kitchen dining area also enjoys magnificent sea views, an excellent range of units, tiled flooring, along with a side door providing access to the exterior of the property.





Total floor area 90.0 m² (969 sq.ft.) approx

This floor plan is for illustrative purposes only. It is not drawn to scale. Any measurements, floor areas (including any total floor area), openings and orientation are approximate. No details are guaranteed, they cannot be relied upon for any purpose and they do not form part of any agreement. No liability is taken for any error, omission or misstatement. A party must rely upon its own inspection(s). Powered by www.propertybox.io



The main bedroom is a generous double featuring solid oak flooring, shutters, and French doors that open out onto the south-facing garden area. The two further comfortable double bedrooms, each with solid oak flooring, enjoy large windows also overlooking the garden area. The bathroom features a large walk-in shower, ceramic tiled flooring, and an excellent range of fixtures; including a double height towel rail with a summer switch option. Throughout the interior, the property is complemented with beautiful, reclaimed feature doors. Outside, the rear garden includes a decked area, lawn, and patio, while the front garden offers a pebbled area with established bushes and driveway parking. The property is presented in excellent condition throughout.

welcome to

Nutley Avenue, Saltdean Brighton

- THREE BEDROOMS
- BEAUTIFULLY PRESENTED
- SEA VIEWS
- NEAR TO LOCAL AMENITIES AND EXCELLENT TRANSPORT LINKS
- WALKING DISTANCE TO THE BEACH AND SALTDEAN LIDO
- SOUTH FACING GARDEN
- DRIVEWAY
- POTENTIAL TO EXTEND

Tenure: Freehold EPC Rating: D
Council Tax Band: D

£500,000



Please note the marker reflects the
postcode not the actual property

view this property online fox-and-sons.co.uk/Property/RTD105334



Property Ref:
RTD105334 - 0008

1. MONEY LAUNDERING REGULATIONS Intending purchasers will be asked to produce identification documentation at a later stage and we would ask for your co-operation in order that there is no delay in agreeing the sale. 2. These particulars do not constitute part or all of an offer or contract. 3. The measurements indicated are supplied for guidance only and as such must be considered incorrect. Potential buyers are advised to recheck measurements before committing to any expense. 4. We have not tested any apparatus, equipment, fixtures or services and it is in the buyers interest to check the working condition of any appliances. 5. Where an EPC, or a Home Report (Scotland only) is held for this property, it is available for inspection at the branch by appointment. If you require a printed version of a Home Report, you will need to pay a reasonable production charge reflecting printing and other costs. 6. We are not able to offer an opinion either written or verbal on the content of these reports and this must be obtained from your legal representative. 7. Whilst we take care in preparing these reports, a buyer should ensure that his/her legal representative confirms as soon as possible all matters relating to title including the extent and boundaries of the property and other important matters before exchange of contracts.


fox & sons



01273 309968



rottingdean@fox-and-sons.co.uk



50 High Street, Rottingdean, BRIGHTON, East
Sussex, BN2 7HF



fox-and-sons.co.uk