



Silverdale Drive, TW16

£3,750 Per calendar month

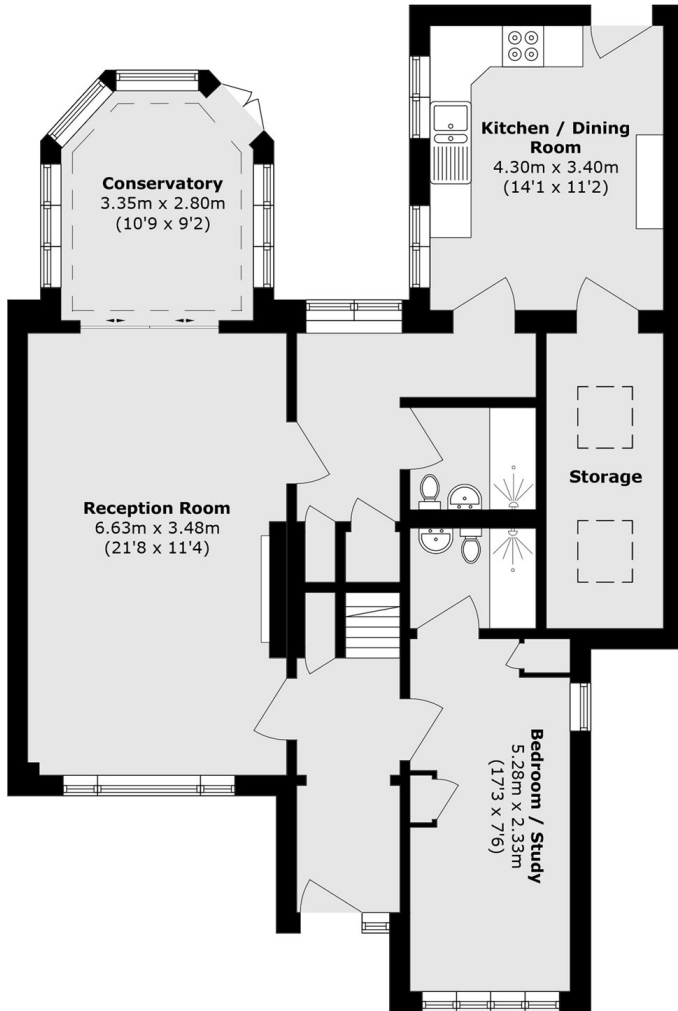
This detached five bedroom family home with a large rear garden is perfect for growing families looking for spacious accommodation on a highly desired road. The property offers three double bedrooms, three bathrooms, large separate kitchen and a separate spacious reception room.

Silverdale Drive is a quiet residential road within the popular 'Berg estate', close to local schools, parks and within walking distance of Sunbury station.

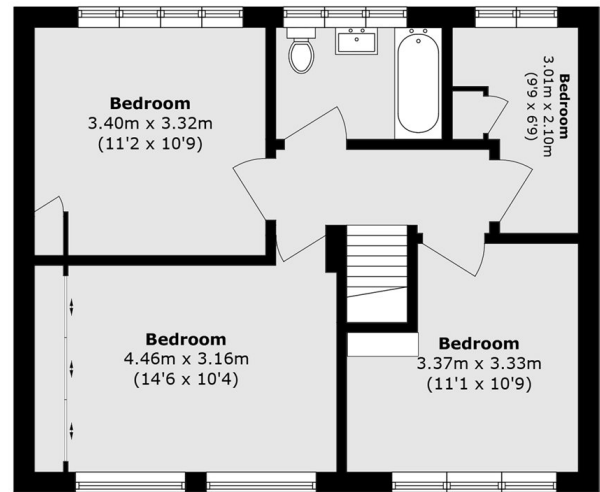
Features

- Fully Detached
- Private Garden
- Conservatory
- Private Driveway
- 3 Bathrooms
- Large Reception

Silverdale Drive, Sunbury-On-Thames, TW16



Ground Floor



First Floor

Total area (approx.): 145.4 sq. m (1565.1 sq. ft)