



## MARSLAND CLOSE, SE17

£450,000

Private garden  
Two double bedrooms  
Excellent condition  
Quiet location  
Contemporary finish  
Ample storage

@marshandparsons  
marshandparsons.co.uk

MARSH &  
PARSONS



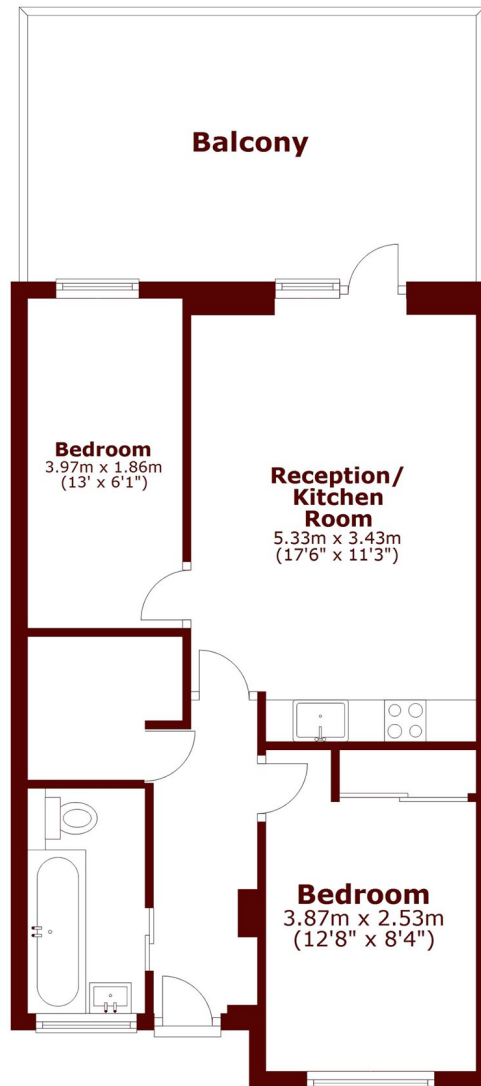
# ABOUT THE PROPERTY

Set on a quiet residential street, this stylish two bedroom ground floor apartment offers bright, modern living with an open plan reception and sleek fitted kitchen with integrated appliances. Both bedrooms are doubles, with built-in wardrobes in the main bedroom, plus a contemporary bathroom and additional storage. The property also benefits from a private rear garden.

Marsland Close is well-placed near Kennington Park and Pasley Park, with excellent transport links via Kennington underground station and nearby Elephant & Castle station, plus strong bus connections to the City and West End.



# STEP INSIDE MARSLAND CLOSE



Main area: Approx. 48.1 sq. metres (518.0 sq. feet)  
Plus balconies, approx. 17.8 sq. metres (191.6 sq. feet)

**Kennington**  
020 7587 1533

Energy Rating: D We aim to make our particulars both accurate and reliable. However, they are not guaranteed; nor do they form part of an offer or contract. If you require clarification on any points then please contact us, especially if you're traveling some distance to view. Please note that appliances and heating systems have not been tested and therefore no warranties can be given as to their good working order

**MARSH &  
PARSONS**