



## Anson Road, N7

£575,000

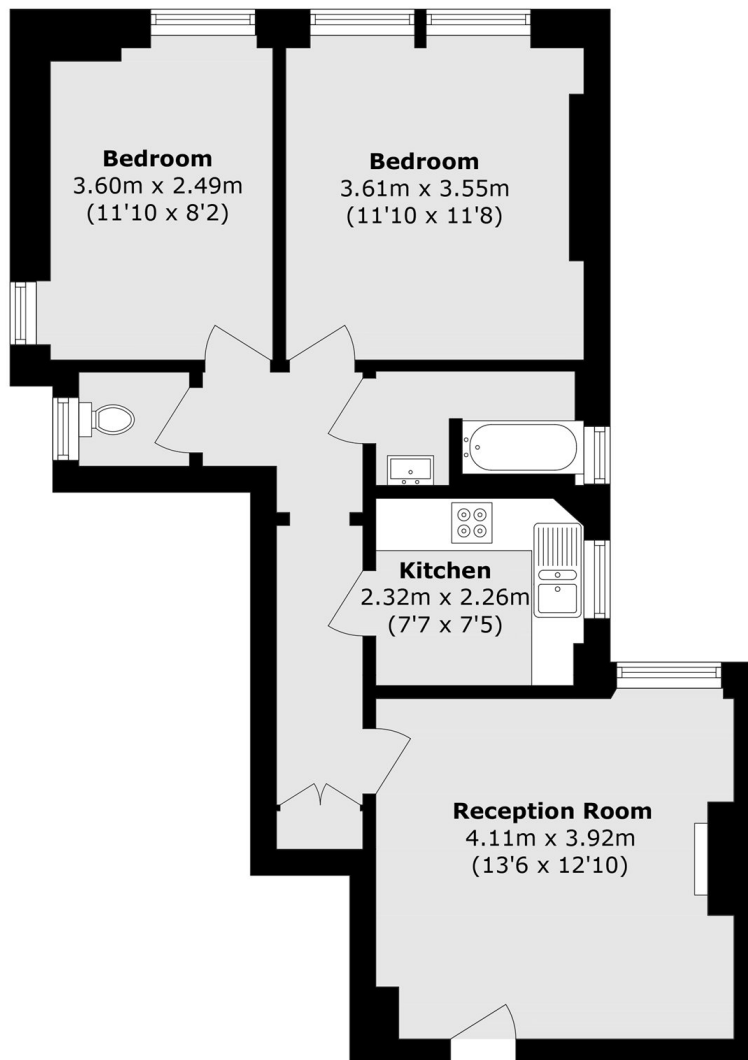
A generous two bedroom apartment on a prime road, within a mansion block. The flat benefits from natural light, a separate kitchen, good storage, a share of the freehold and a large communal garden.

Anson Road is an exceptionally quiet tree-lined road close to Tufnell Park station (Northern line), Holloway Road station (Piccadilly line), Upper Holloway overground station and numerous local amenities.

### Features

- Two Bedrooms
- Mansion Block
- Share of Freehold
- Communal Gardens
- Great Transport Links
- Separate Kitchen

# Anson Road, London, N7



Total area (approx.): 58.2 sq. m (626.4 sq. ft)