



## St. Marks Road, TW11

£1,299,950

Set in a popular Teddington road, this unique 1930's semi-detached family property has elegant period features and is presented in excellent condition, comprising of four double bedrooms, a study and a beautiful south facing garden.

St. Marks Road is ideally positioned for the lively Teddington High Street, offering an excellent choice of independent cafés, restaurants and everyday shops. The beautiful open spaces of Bushy Park are close by, while the property is also well placed for highly regarded local schools including Collis Primary School. Teddington railway station provides convenient links into central London.

### Features

- Semi-Detached
- Off-Street Parking
- Stunning Studio/Outhouse
- South Facing Garden
- Two Bath/Shower Rooms
- Excellent School Catchment



## St. Marks Road, TW11

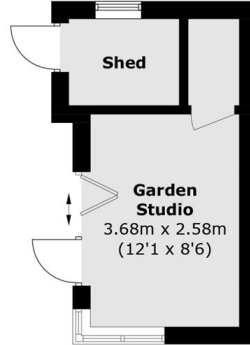
On entering, a bright hallway leads to a modern kitchen/dining room, creating a social entertaining space with a utility room to the side. French doors give access to an enclosed well maintained garden. To the right of the hallway there are two attractive reception rooms.

On the first floor there are two bright double bedrooms as well as a study/single bedroom and a family bathroom. The top floor of the home offers a further two double bedrooms and an additional bathroom.

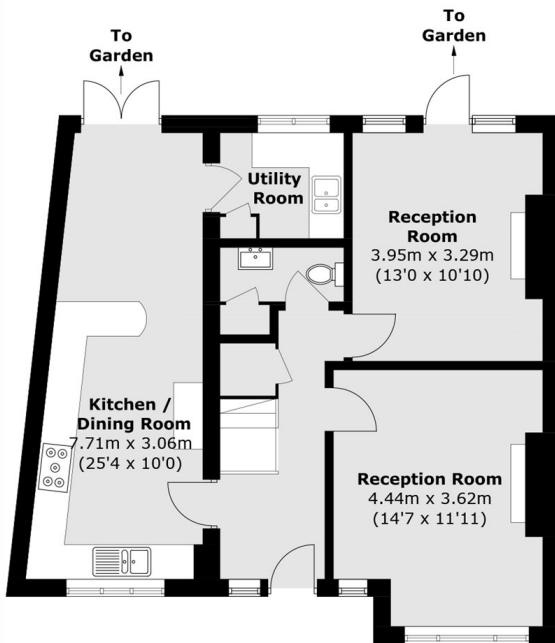
The South facing garden is incredibly private with a large studio which can be used as a home office or gym. There is also off street parking available to the front of the property for multiple cars



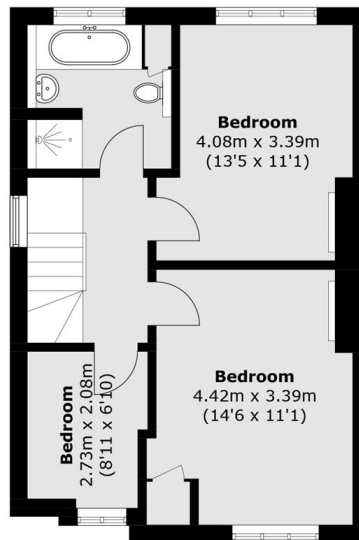
# St. Marks Road, Teddington, TW11



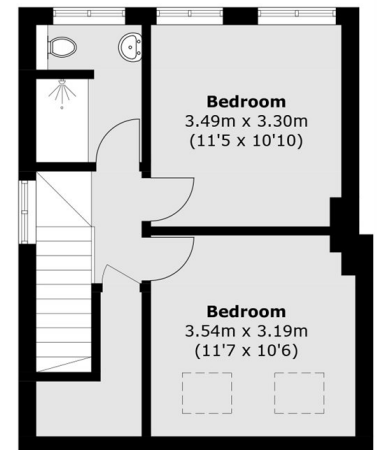
(Not Shown In Actual  
Location / Orientation)



**Ground Floor**



**First Floor**



**First Floor**

Total area (approx.): 154.5 sq. m (1,663.1 sq. ft)  
Outbuilding : 14.7 sq. m (158.2 sq. ft)