



Enhanced with ALBY STREET

146 Faversham Road, Kennington
£290,000

Skippers

146 Faversham Road

Kennington, Ashford

Positioned along the sought-after Faversham Road, this well-presented two-bedroom semi-detached home offers a comfortable blend of character and modern convenience.

Council Tax band: C

Tenure: Freehold

- Semi Detached
- Two Bedroom
- Popular location
- Off-road parking
- Period architecture
- Modern kitchen with integrated appliances
- Spacious rear garden
- Wood burning stove
- Exposed brick fireplace
- Close to local schools & transport links



Sitting room

12' 10" x 13' 1" (3.90m x 4.00m)

Dining room

12' 10" x 13' 1" (3.90m x 4.00m)

Kitchen

6' 3" x 11' 2" (1.90m x 3.40m)

Bathroom

6' 3" x 11' 2" (1.90m x 3.40m)

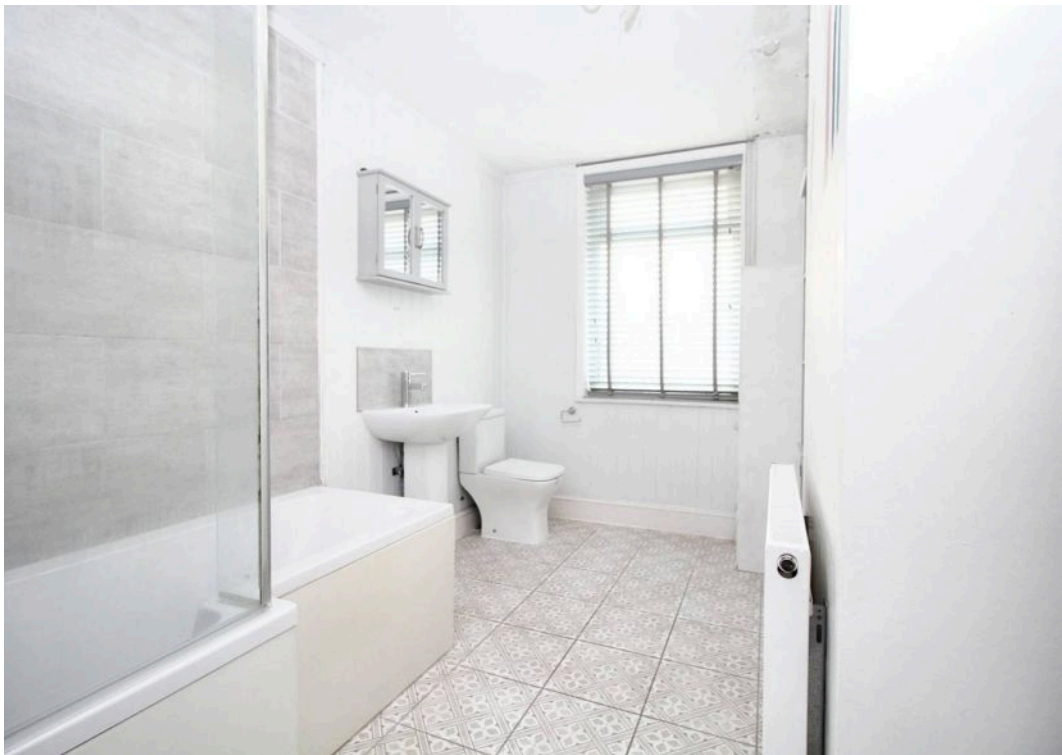
Bedroom One

12' 6" x 12' 10" (3.80m x 3.90m)

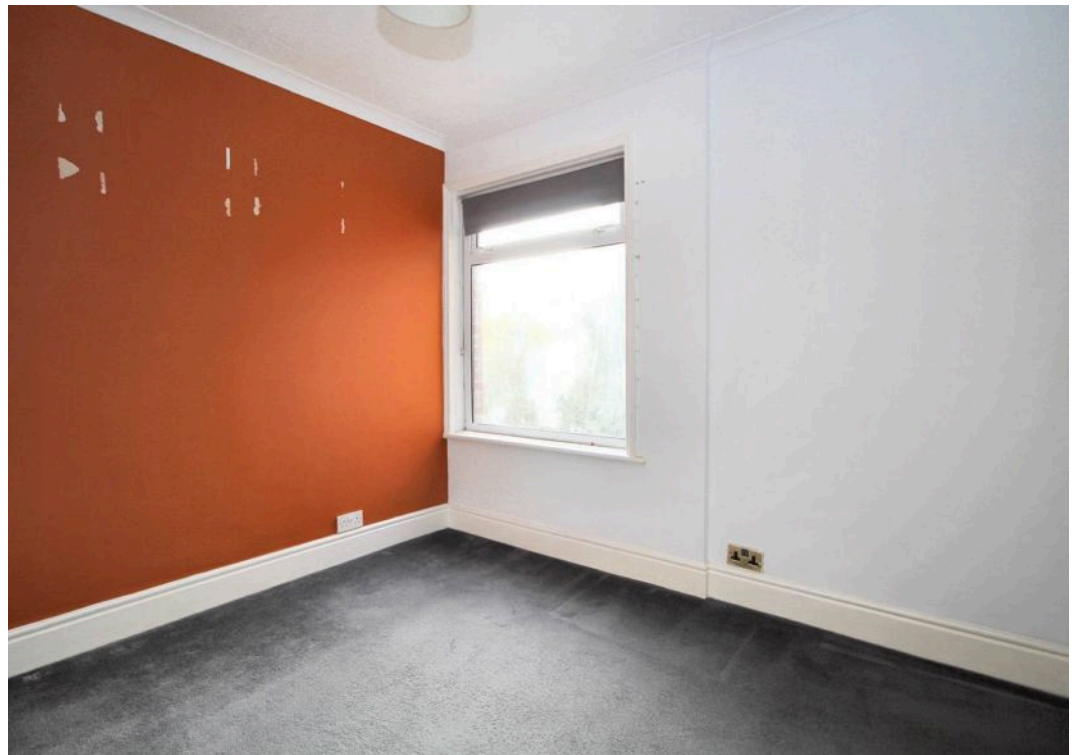
Bedroom Two

9' 2" x 13' 1" (2.80m x 4.00m)

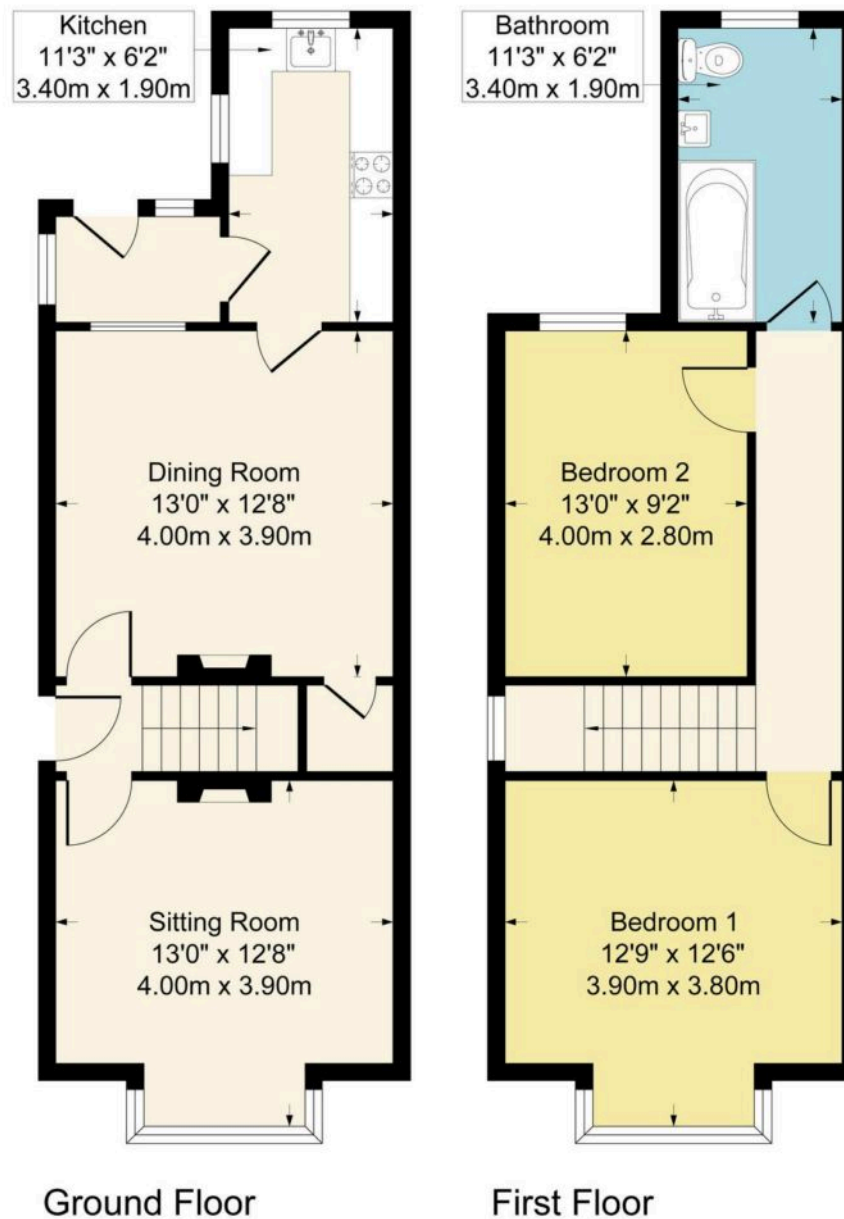








Approximate Gross Internal Area
912 sq ft - 85 sq m



Although every attempt has been made to ensure accuracy, all measurements are approximate.
This floorplan is for illustrative purposes only and not to scale.
Measured in accordance with RICS Standards.



Skippers Estate Agents – Ashford

5 Kings Parade High Street, Ashford – TN24 8TA

01233 632383

ashford@skippers-ea.co.uk

skippers-ea.co.uk

Skippers

