



Sanctuary Street, SE1 £575,000

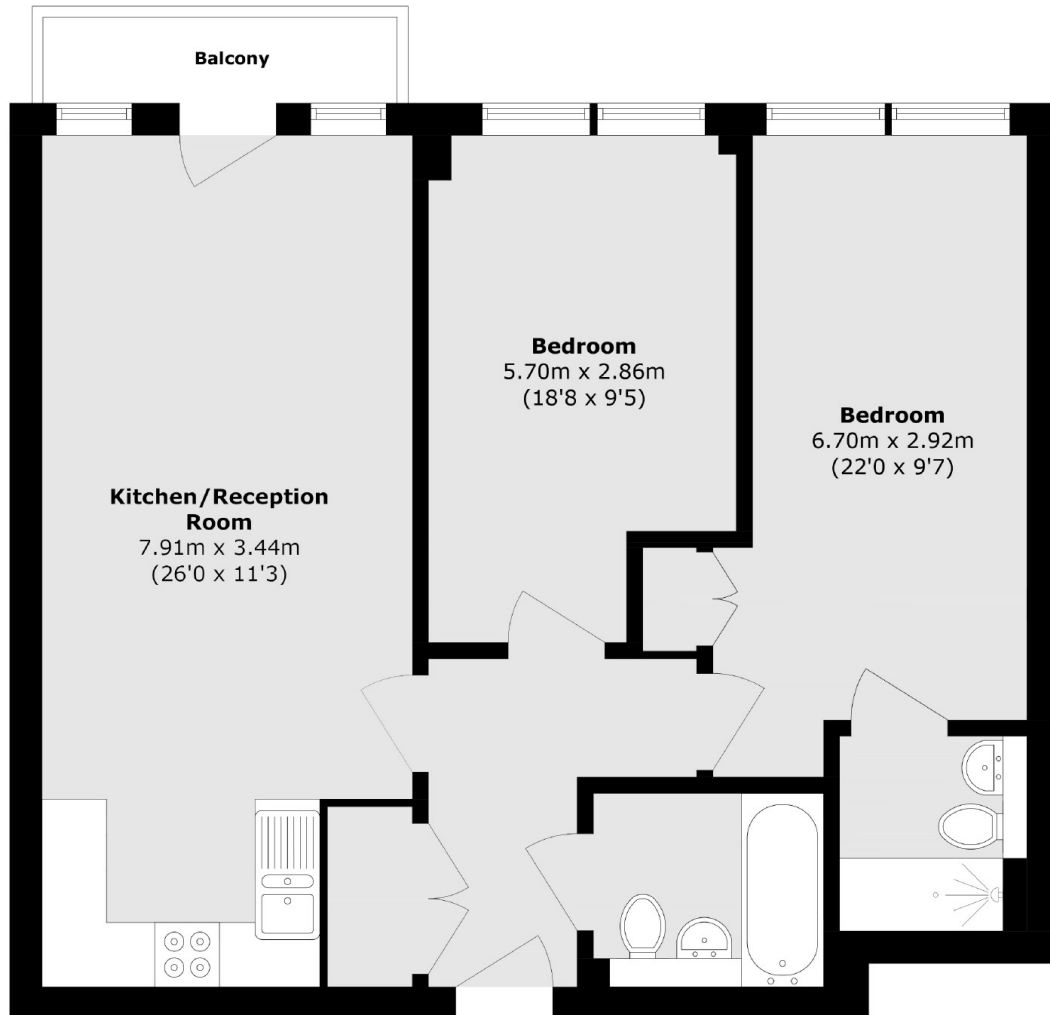
A highly attractive modern apartment featuring a spacious open-plan living area with a contemporary kitchen, opening onto a private balcony. The property offers two double bedrooms, two bathrooms, ample storage, and the additional benefit of secure allocated underground parking.

Sanctuary Street is ideally situated just behind Borough Station, quietly tucked away off Marshalsea Road at the foot of Borough High Street. The location offers easy access to London Bridge, Borough Market, and the South Bank, all just a short walk away. Residents benefit from excellent transport connections across London, making it an ideal base for both work and leisure.

Features

- Two Bedrooms & Two Bathrooms
- Private Balcony
- Lift Access & Secure Entry
- Secure Underground Parking
- Excellent Transport Links
- Offers in Excess of £600,000

Sanctuary Street, London, SE1



Total area (approx.): 71.4 sq. m (768.5 sq. ft)

Balcony area (approx.): 2.6 sq. m (27.9 sq. ft)