



SAMUEL WOOD

3 Lime Close, Ludlow, Shropshire, SY8 2PP

£900 Per Month



3 Lime Close

Ludlow, Shropshire, SY8 2PP



- Furnished

MANAGED BY SAMUEL WOOD. Well presented bungalow with low maintenance garden and driveway parking. Offered furnished. Pleasant cul de sac position.



This well presented and furnished 2 bedroom semi-detached bungalow sits in a pleasant cul de sac of similar properties and enjoys a low maintenance and good sized garden together with driveway parking. Accommodation benefiting from gas fired heating and upvc double glazing includes: Entrance Hall, Lounge / Dining Room, Conservatory, Kitchen, 2 Bedrooms and Shower Room. The property also has the benefit of solar panels on the roof which should provide cheaper electricity costs.

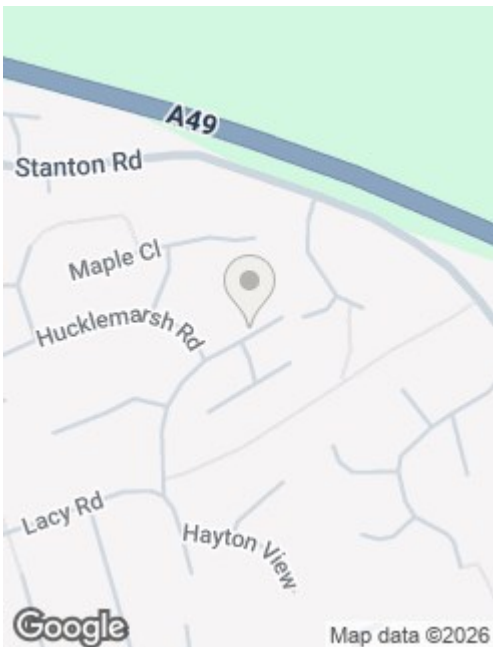
Please note that the property is being offered as furnished, and there is no option for any individual items of furniture being removed.







Directions



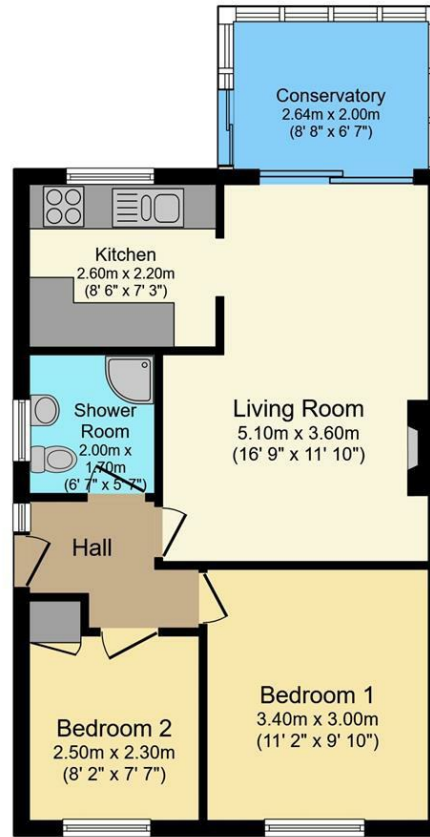
Furnished.
No smoking/vaping.
Pets considered. / No Pets.
EPC - B
Council Tax Band – B
Utilities (mains gas, mains electric, mains water, mains drainage)
Parking situation – off road parking for 1 vehicle

IMPORTANT INFORMATION FOR APPLICANTS WHO ARE CURRENTLY RENTING:

If you are renting another property, please check your notice requirements before booking a viewing or submitting an application. From 1 May 2026, tenants ending an assured periodic tenancy in England usually need to give 2 months' written notice, and the tenancy must normally end on the day rent is due or the day before. This means your actual move date may be later than you expect. Please do not assume that your current landlord will agree to a shorter notice period or an earlier release unless this has been confirmed. We may ask you to confirm your current tenancy notice position before progressing an application.







Floor Plan

This Floor Plan is for illustration purposes only and may not be representative of the property. The position and size of doors, windows and other features are approximate. Unauthorized reproduction prohibited. © PropertyBOX

We take every care in preparing our sales details. They are checked and usually verified by the Vendor. We do not guarantee appliances, alarms, electrical fittings, plumbing, showers etc. You must satisfy yourself that they operate correctly. Room sizes are approximate; they are usually taken in metric and converted to imperial. Do not use them to buy carpets or furniture. We cannot verify the tenure, as we do not have access to the legal title; we cannot guarantee boundaries or rights of way so you must take the advice of your legal representative. No person in the employment of or representing Samuel Wood has any authority to make any representation or warranty whatever in relation to this property. If there is any point which is of particular importance to you, please contact the office and we will be pleased to check the information. Do so particularly if contemplating travelling some distance to view. Applicants are advised that the majority of our shots are taken with a wide angle lens.

CONTEMPORARY AGENCY • TRADITIONAL VALUES
2 Shoplatch, Shrewsbury, Shropshire, SY1 1HF
Tel: 01743 272710 | shrewsbury@samuelwood.co.uk