



Regency Crescent, NW4

£425,000

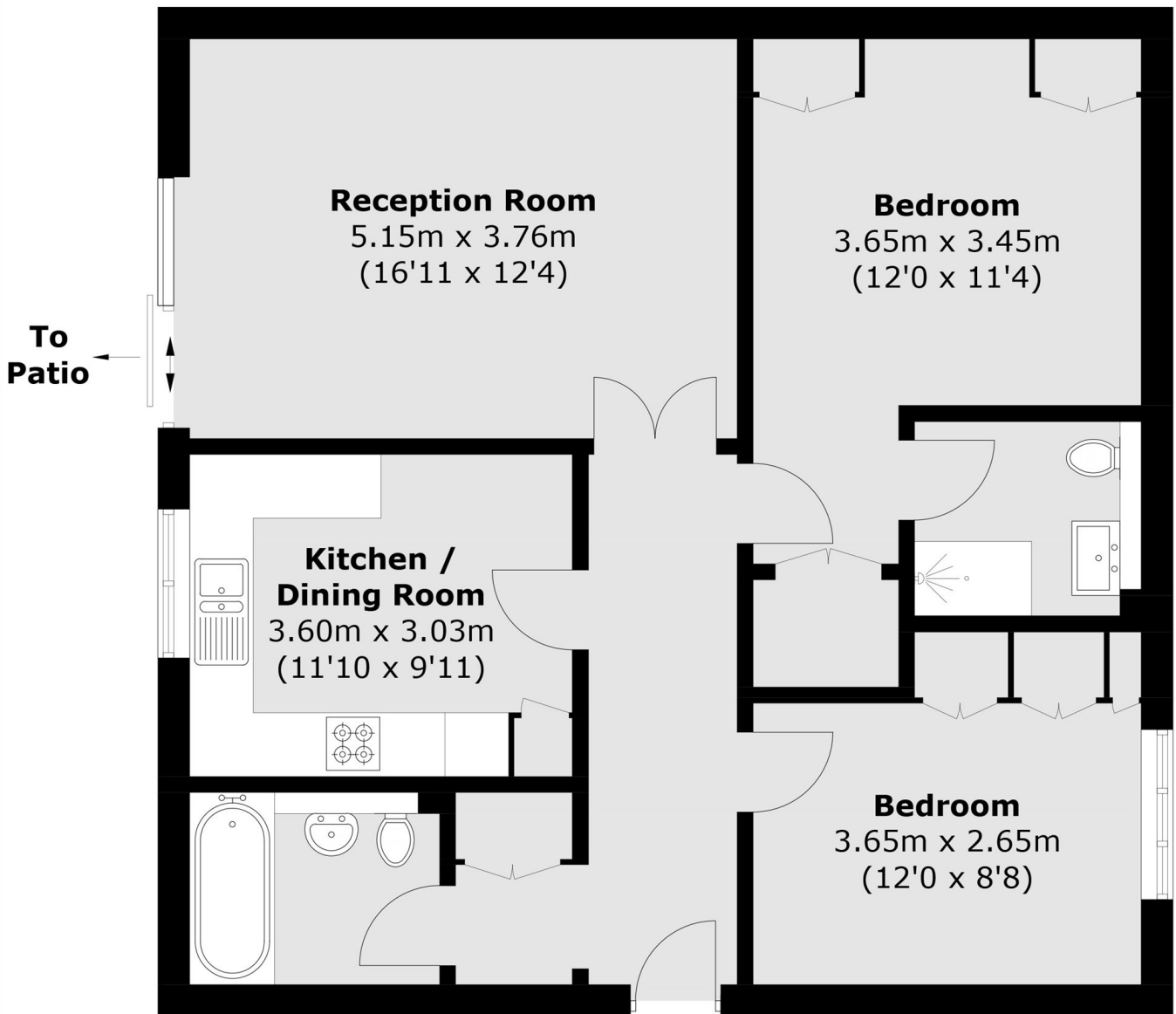
A two double bedroom apartment located on the ground floor of this prestigious block. This home benefits from two bathrooms, a separate kitchen, a balcony and a garage.

Regency Crescent is a popular development situated off Holders Hill Road. It is within easy access of Mill Hill East underground station, Finchley and Hendon.

Features

- Two Double Bedrooms
- Two Bathrooms
- Separate Kitchen
- Balcony
- Garage
- Communal Gardens

Regency Crescent,
London, NW4



Total area (approx.): 80.1 sq. m (862.2 sq. ft)