



COUNCIL TAX

North Northamptonshire Council - Band A

PRICE INFORMATION

*Guides are provided as an indication of each seller's minimum expectation. They are not necessarily figures which a property will sell for and may change at any time prior to the auction. Each property will be offered subject to a Reserve (a figure below which the Auctioneer cannot sell the property during the auction), which we expect will be set within the Guide Range or no more than 10% above a single figure Guide. Additional Fees and Disbursements will be charged to the buyer - see individual property details and Special Conditions of Sale for actual figures.

BUYERS PREMIUM CHARGE

The purchaser will be required to pay a buyer's premium charge of £1,440 (£1,200 plus VAT).

BUYERS ADMINISTRATION CHARGE

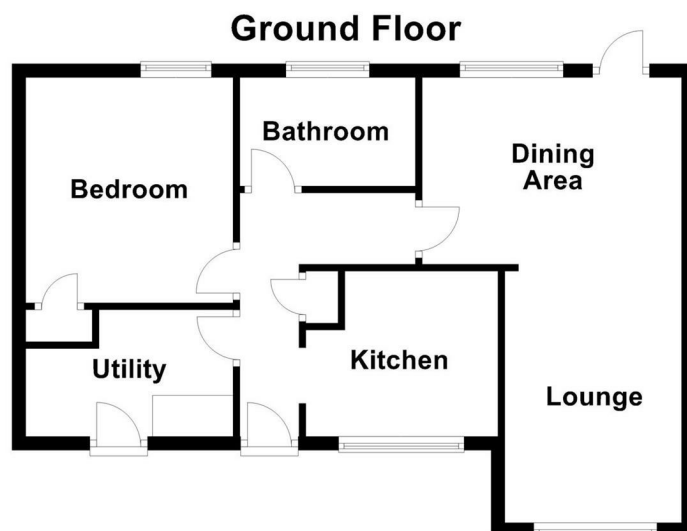
The purchaser will be required to pay an administration charge of £900 (£750 plus VAT).

COPYRIGHT

All photographs displayed are the exclusive property of Richard Greener Estate Agents. They are protected under international copyright laws. No photograph may be copied, reproduced, distributed, altered, transmitted, or otherwise used in any form or by any means without prior written permission from the copyright owner. Unauthorised use of these images is strictly prohibited and may result in legal action or a £2,000 fine.

DOING15012026/0257

51 Thetford Close, Corby, NN18 9PH



Not to scale. For illustrative purposes only



For auction £75,000

FOR SALE BY ONLINE AUCTION ON TUESDAY 14TH APRIL 2026

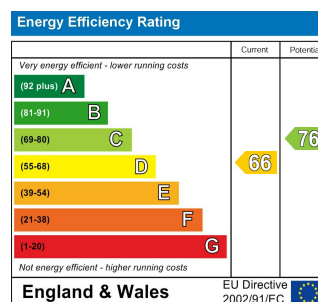
GUIDE PRICE: £75,000

VIEWINGS - BY APPOINTMENT ONLY - PLEASE CALL 01604 25977

A well-located one-bedroom semi-detached bungalow situated on the outskirts of Corby, within easy access to main carriageways and local amenities. Offering excellent potential for major refurbishment, the property provides approximately 500 sq ft of accommodation comprising an entrance hall, a comfortable lounge/diner, kitchen, bedroom and utility. Externally, the property benefits from a modest rear garden enjoying a sunny aspect. This home presents an ideal opportunity for buyers looking to add value in a convenient location. Viewing is strongly recommended.

TO REGISTER TO BID AND VIEW LEGAL DOCUMENTS, PLEASE VISIT OUR WEBSITE: www.auctionhouse.co.uk/northamptonshire

You may download, store and use the material for your own personal use and research. You may not republish, retransmit, redistribute or otherwise make the material available to any party or make the same available on any website, online service or bulletin board of your own or of any other party or make the same available in hard copy or in any other media without the website owner's express prior written consent. The website owner's copyright must remain on all reproductions of material taken from this website.



51 Thetford Close, Corby, NN18 9PH

ACCOMMODATION

ENTRANCE HALL

12'00 x 2'10

Entered via a front door with a storage cupboard and doors to:-



KITCHEN

9'03 x 7'11

Fitted with a range of floor and wall mounted units, there are windows to the front elevation and windows interally to the lounge.



UTILITY ROOM

10'00 x 6'01

A door from the front elevation, there is storage space available.



LOUNGE/DINER



LOUNGE AREA

12'04 x 8'06

Windows from the kitchen this room opens to the dining area



DINING AREA

8'05 x 8'02

With doors and windows to the rear garden.



BEDROOM

10'09 x 10'00

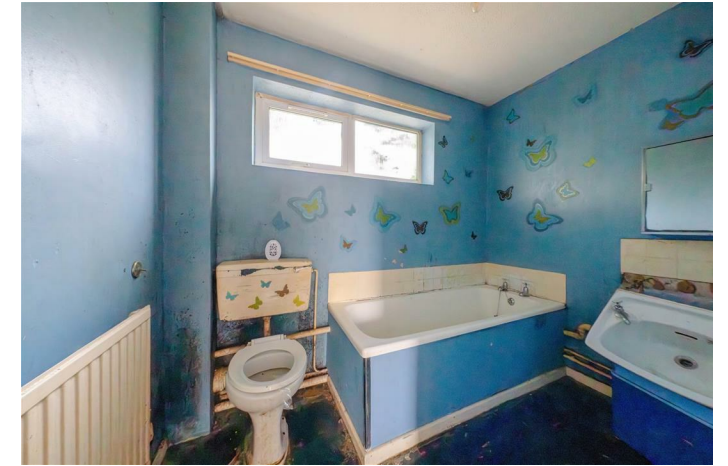
Windows to the rear garden and space for a double bed.



BATHROOM

8'05 x 5'02

Suite comprising WC and bath, with a defective hand-wash basin and a window to the rear.



OUTSIDE



REAR GARDEN

Access from the lounge/dining room, there is a fenced boundary.



SERVICES

None of these have been tested.

For further information on viewing call 01604 259773