



Church Street, Brassington, DE4 4HJ

This beautiful and charming cottage has been substantially and sympathetically updated. With a new roof, new bathroom, air-source heat pump, new window frames and an updated kitchen, the home has been future-proofed whilst retaining and enhancing the original features of this 18th century cottage. Testament to the improvements to this historic cottage is the fact that the EPC rating is C.

Located in the centre of this breathtakingly-pretty village, Pennyford Cottage has a kitchen, sitting room and bathroom on the ground floor and two bedrooms on the first floor. The courtyard garden has areas for seating and gardening, whilst there is parking available adjacent to the property on the former pinfold.

This historic cottage is situated in the centre of the village, opposite the church and Miner's Arms public house. In walking distance of the primary school and High Peak Trail, there are direct buses from the stop outside the church to Ashbourne, Wirksworth and Matlock.

Brassington is close to Carsington Water and has easy access to the High Peak Trail, which runs across the north-eastern edge of the village. There are a couple of pubs which are popular with locals and visitors alike, a primary school and pre school within a friendly, thriving community. It's the perfect base from which to explore the Derbyshire Dales and southern Peak District.

- New wooden window frames and stone surrounds in 2018
- Kitchen updated with recycled materials
- Built in the 1700s
- Two pubs and High Peak Trail within walking distance
- New bathroom and new roof in 2021
- Air-source heat pump fitted 2025
- Parking available on adjacent pinfold
- EPC rating C
- Revealed the original stonework in fireplaces
- Located in the heart of this popular village with primary school

£330,000

Church Street, , Brassington, DE4 4HJ

Front of the home

The front garden of this delightful cottage is bounded by a dry stone wall. An open entrance into the garden has a gravel path leading to the front door. The flower bed on the left is packed with colourful plants and some historic stoneware from the home, including a grinding stone. The recently installed air-source heat pump is located here now too. On the exterior wall of the cottage is an outside tap and a wall-mounted letterbox to the right of the front door.

Enter the home through a half-glazed wooden stable door with iron handle into the kitchen.

Kitchen

13'6" x 6'9" (4.12 x 2.07)

The kitchen has a lovely natural feel, with a tiled floor, high beamed ceiling and reclaimed solid pine worktops. On the right the timber framed south east facing window has an original oak beam overhead and iron latch. The distinctive wide sill was formerly a stone sink. This dual aspect kitchen has a wide north facing window at the opposite end of the room.

On the left, a large ceramic Butler's sink with swan neck chrome mixer tap is set within the solid pine worktop, with a cabinet and drawers beneath. There is space on the right for an electric oven. On the opposite side, the L-shaped worktop has cabinets below and a breakfast bar with space for 2-3 stools. There is space at the right-hand end of this worktop for a fridge-freezer or storage unit.

The kitchen has two ceiling light fittings, a radiator, stripped pine door to the sitting room and an open entrance into the utility area.

Utility Area

6'10" x 2'4" (2.1 x 0.72)

With space and plumbing for a washing machine, this area has a recessed ceiling spotlight and loft hatch. A pine door leads through to the bathroom.

Bathroom

7'7" x 6'8" (2.32 x 2.05)

The bathroom was fitted in 2021. The bath has a centrally-positioned waterfall chrome mixer tap, meaning you can fully stretch out in the bath. Overhead is a mains-fed shower with rainforest shower head and separate hand-held attachment. The sturdy ceramic pedestal sink has a chrome mixer tap and there is a modern vertical radiator and ceramic WC with integral flush. The room has a tiled floor, wide frosted double glazed window, recessed ceiling spotlights, two tiled walls and two painted walls.

Sitting Room

13'5" x 12'9" (4.1 x 3.9)

The owner has exposed the beautiful stone fireplace in this room, which has a flagstone tiled hearth and ornate decorative wooden mantelpiece. Another dual aspect room, the large south facing window has new timber frames and a stone surround - the cute deep-set north facing window opposite demonstrates the thickness of the walls in this cottage. The room has stripped pine floorboards, a ceiling light fitting, vertical radiator and beamed ceiling. There is a clever recessed cupboard in the right-hand corner and an additional radiator under the stairs. An open staircase leads up to the first floor.

Stairs to first floor landing

Painted stairs with a balustrade on the right lead up to the landing, with a Velux window overhead and stripped pine floorboards which flow seamlessly into both bedrooms. There is a radiator, ceiling light fitting and small loft hatch here. Matching bevelled pine doors with iron latches lead into both bedrooms.

Bedroom One

17'6" x 12'11" (5.35 x 3.95)

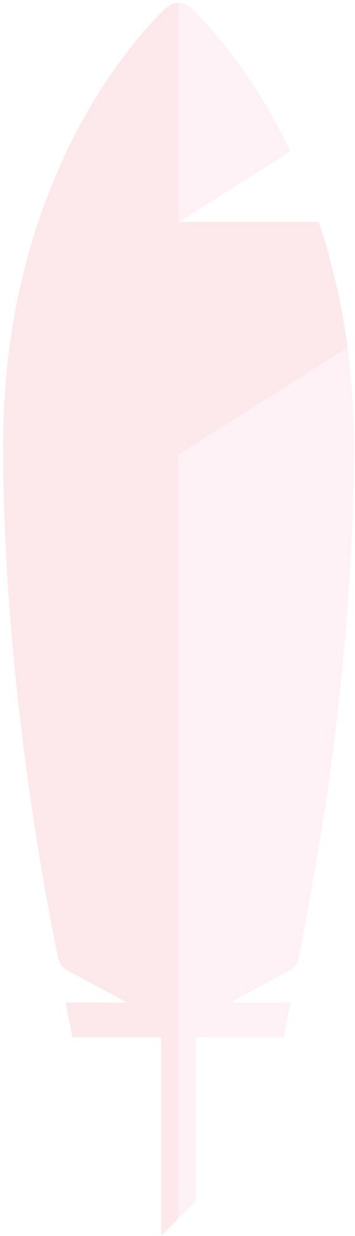
This absolutely beautiful bedroom is L-shaped and dual aspect. The high ceiling with Velux window and light fitting adds to the sense of space and light. There are timber framed windows to the front and rear. The front window is south facing and has the original stone surround. The owner has also discovered and exposed the original stone fireplace, which is now used for display. The wide alcove to the right of the entrance door has space for a wardrobe or chest of drawers. The room has a radiator, wall light and internal window over the stairs.

Bedroom Two

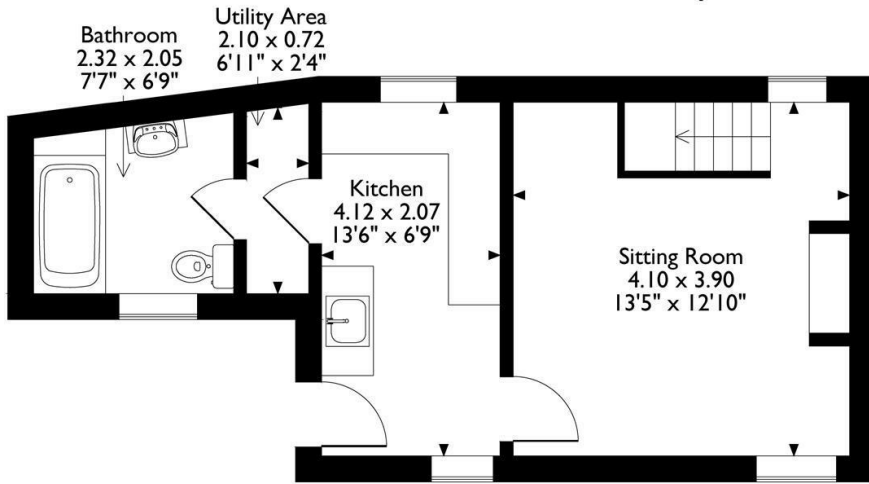
13'1" x 6'10" (4 x 2.1)



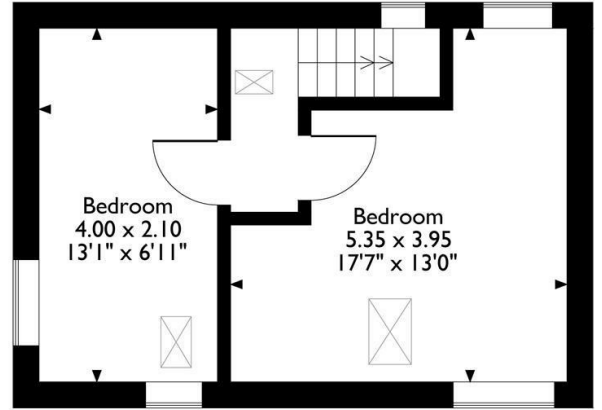
Yet another dual aspect room with a Velux window, this cosy bedroom feels light and airy as a result. Windows face to the south and westwards across to the village church and local pub. The room has a high ceiling with light fitting and loft hatch as well as stripped pine floorboards, a radiator and the air-source heat pump controls are housed in this room.



Pennyford Cottage Approximate Gross Internal Area 57 Sq M / 614 Sq Ft



Ground Floor



First Floor

Please note that the location of doors, windows and other items are approximate and this floorplan is to be used for illustrative purposes only. Unauthorized reproduction is prohibited.



Energy Efficiency Rating		
	Current	Potential
Very energy efficient - lower running costs		
(92 plus) A		
(81-91) B		
(69-80) C		
(55-68) D		
(39-54) E		
(21-38) F		
(1-20) G		7
Not energy efficient - higher running costs		
England & Wales	EU Directive 2002/91/EC	

Environmental Impact (CO ₂) Rating		
	Current	Potential
Very environmentally friendly - lower CO ₂ emissions		
(92 plus) A		
(81-91) B		
(69-80) C		
(55-68) D		
(39-54) E		
(21-38) F		
(1-20) G		C
Not environmentally friendly - higher CO ₂ emissions		
England & Wales	EU Directive 2002/91/EC	

10 MARKET PLACE, WIRKSWORTH, DERBYSHIRE, DE4 4ET
TELEPHONE: 0330 122 9960 + 07704 575743

REGISTERED ADDRESS: SUNNYSIDE COTTAGE, MAIN STREET, KIRK IRETON, DERBYSHIRE, DE6 3JP
REGISTERED IN ENGLAND. COMPANY NUMBER: 11836315