



SAXON SHORE
— ESTATE AGENTS —



2 Mount Pleasant, Faversham, Kent ME13 0PZ Offers in excess of £250,000

Introducing this beautifully presented, one bedroom, grade II listed former sweet shop in Oare, on the outskirts of Faversham. Located close to local amenities and within walking distance to the town centre and main line train station. This cottage has been lovingly restored by the current owner and combines modern convenience with historic charm.

Accommodation spans across three floors and comprises a spacious open plan lounge/dining room, a well appointed kitchen with a butler sink and access to an outside seating area to the ground floor.

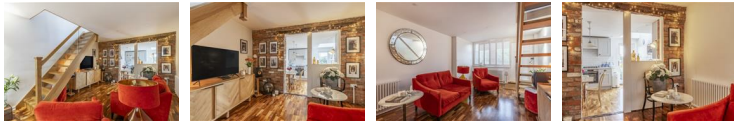
Underneath is a cellar, accessed via a hatch in the lounge, currently used for storage.

Upstairs is a stunning bedroom suite with french doors that open onto a private balcony and a modern bathroom that has a free standing bath.

Outside is a further, separate courtyard garden with a summer house providing sheltered seating.

Lounge

11'5" x 18'2" (3.5 x 5.55)



Kitchen/Diner

10'0" x 12'8" (3.07 x 3.87)



Balcony



Bedroom

11'5" x 11'11" (3.5 x 3.64)



Bathroom

6'3" x 11'5" (1.91 x 3.5)



Balcony



Garden



View



BASEMENT
12.9 sq.m. (139 sq.ft.) approx.

GROUND FLOOR
31.3 sq.m. (337 sq.ft.) approx.

1ST FLOOR
19.4 sq.m. (209 sq.ft.) approx.



TOTAL FLOOR AREA: 63.6 sq.m. (685 sq.ft.) approx.

Whilst every attempt has been made to ensure the accuracy of the floorplan contained here, measurements of doors, windows, rooms and any other items are approximate and no responsibility is taken for any error, omission or mis-statement. This plan is for illustrative purposes only and should be used as such by any prospective purchaser. The services, systems and appliances shown have not been tested and no guarantee as to their operability or efficiency can be given.
Made with Metropix ©2025

The Alexander Centre 15 - 17 Preston Street, Faversham, ME13 8NZ

Tel: 01795 533577

info@saxonshore.co.uk

www.saxonshore.uk



SAXON SHORE
- ESTATE AGENTS -