



Hill House
Brussels Green | Darsham | Suffolk | IP17 3RN

CHARACTER REIMAGINED



This is a rare opportunity to acquire a beautifully reimagined period cottage, thoughtfully formed from two former dwellings and now offering a seamless and versatile living environment.

Set within the peaceful village of Darsham, the property enjoys a wonderful sense of privacy, framed by far-reaching views across open farmland that define the setting and create a calm, rural backdrop to daily life.



KEY FEATURES

- A Beautifully Renovated Period Cottage formed from Two Former Dwellings
- Flexible Layout offering Three or Four Bedrooms
- Self-Contained Annexe with Private Access
- Stunning Countryside Views to both Front and Rear
- Light-Filled Interiors with a Natural, Free-Flowing Layout
- Character Features including a Charming Aga
- Wrap-Around Garden with Elevated Decking Terrace
- Driveway providing Parking for up to Four Vehicles
- Sought-After Village Setting close to the Suffolk Heritage Coast
- The Accommodation extends to 1,685sq.ft

From the moment you arrive, there is a clear sense of quality and care in the way the home has been updated. The interiors are bright and welcoming, with natural light flowing effortlessly throughout the ground floor. The layout has been designed to feel both open and practical, with each space connecting intuitively to the next, creating a home that is equally suited to family living and relaxed entertaining.

Versatility and Thoughtful Design

One of the defining features of Hill House is its flexibility. The accommodation can be configured as either a three or four bedroom home, depending on individual needs, with additional living space provided by a self-contained annexe. This annexe benefits from its own private access and shower room, making it ideal for multigenerational living, guest accommodation, or as a dedicated studio or workspace.





KEY FEATURES

Hub Of The Home

The kitchen sits at the heart of the home and offers both character and practicality, complemented by the presence of a traditional Aga that enhances the overall warmth and charm. Adjacent living spaces provide comfortable areas for both formal and informal use, while the snug offers a quieter retreat, perfect for reading or unwinding at the end of the day.

Gardens and Surroundings

Externally, the property continues to impress. The wrap-around garden provides a variety of spaces to enjoy throughout the day, with a decked terrace positioned to take full advantage of the views and evening light. Whether hosting guests or simply enjoying the peaceful surroundings, the outdoor areas feel both private and expansive.

Providing Potential

A separate outbuilding offers additional storage or potential for further use, while the driveway provides parking for multiple vehicles. The setting itself is one of the property's greatest assets, with uninterrupted countryside views to both the front and rear, reinforcing the sense of rural seclusion while remaining well connected.









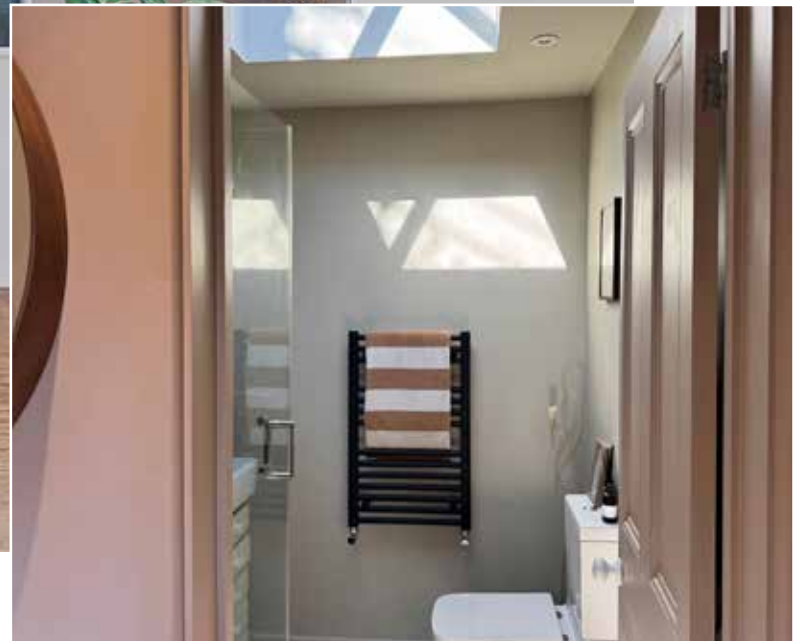
















INFORMATION



On The Doorstep

Darsham is a charming and well-regarded Suffolk village, known for its strong sense of community and beautiful rural surroundings. The village hall hosts a variety of local events, while the nearby Fox pub is within easy walking distance and offers a welcoming atmosphere. A short drive leads to the popular Pinch farm shop and bakery in Kelsale, as well as The Crown in Westleton. The Suffolk Heritage Coast is easily accessible, with Dunwich, Southwold, Aldeburgh and Walberswick all within comfortable reach. For nature lovers, the renowned RSPB Minsmere reserve offers exceptional walking and wildlife experiences. The area is also known for its dark skies, providing stunning stargazing opportunities.

How Far Is It To?

Saxmundham: approx. 5 miles

Southwold: approx. 10 miles

Aldeburgh: approx. 11 miles

Dunwich: approx. 6 miles

Darsham Railway Station: approx. 1 mile

Saxmundham Railway Station: approx. 5 miles - Both Darsham and Saxmundham stations provide convenient links to London Liverpool Street, making the property suitable for those seeking a countryside retreat with commuter accessibility.

Directions - Please Scan QR Code Below

From Beccles, proceed south via the A145 towards Blythburgh. Continue through Blythburgh and join the A12 heading south. Follow the A12 towards Darsham, then turn off towards Brussels Green. Hill House will be found within this peaceful rural setting on the left.

What Three Words Location

Every 3 metre square of the world has been given a unique combination of three words. Download the app to pinpoint the exact location of this property using the words... [slams.skate.proof](#)

Services, District Council and Tenure

Oil Central Heating, Mains Water, Mains Drainage

Super Fast Broadband Available - please see www.openreach.com/fibre-checker

Mobile Phone Reception - varies depending on network provider

Please see www.checker.ofcom.org.uk

East Suffolk District Council - Council Tax Band E

Freehold

Norfolk Country Properties. Registered in England and Wales No. 06777456. Registered Office - Blyth House, Rendham Road, Saxmundham, IP17 1WA

Copyright © Fine & Country Ltd.

Please Note: All images and floorplans shown in the brochure and online remain copyright to the individual photographer and may not be used for any purposes whatsoever without prior permission.





Approximate total area⁽¹⁾
 1685 ft²
 156.6 m²

Balconies and terraces
 248 ft²
 23 m²

Reduced headroom
 58 ft²
 5.4 m²

(1) Excluding balconies and terraces

Reduced headroom
 Below 5 ft/1.5 m

Calculations reference the RICS IPMS 3C standard. Measurements are approximate and not to scale. This floor plan is intended for illustration only.

GI RAFFE360

Energy Efficiency Rating		Current	Potential
Very energy efficient - lower running costs			
(92-100)	A		
(81-91)	B		
(69-80)	C		
(55-68)	D		62
(39-54)	E	47	
(21-38)	F		
(1-20)	G		
Not energy efficient - higher running costs			
England, Scotland & Wales			
EU Directive 2002/91/EC			

Agents notes: All measurements are approximate and for general guidance only and whilst every attempt has been made to ensure accuracy, they must not be relied on. The fixtures, fittings and appliances referred to have not been tested and therefore no guarantee can be given that they are in working order. Internal photographs are reproduced for general information and it must not be inferred that any item shown is included with the property. For a free valuation, contact the numbers listed on the brochure.





FINE & COUNTRY

Fine & Country is a global network of estate agencies specialising in the marketing, sale and rental of luxury residential property. With offices in the UK, Australia, Egypt, France, Hungary, Italy, Malta, Namibia, Portugal, South Africa, Spain, The Channel Islands, UAE, USA and West Africa we combine the widespread exposure of the international marketplace with the local expertise and knowledge of carefully selected independent property professionals.

Fine & Country appreciates the most exclusive properties require a more compelling, sophisticated and intelligent presentation - leading to a common, yet uniquely exercised and successful strategy emphasising the lifestyle qualities of the property.

This unique approach to luxury homes marketing delivers high quality, intelligent and creative concepts for property promotion combined with the latest technology and marketing techniques.

We understand moving home is one of the most important decisions you make; your home is both a financial and emotional investment. With Fine & Country you benefit from the local knowledge, experience, expertise and contacts of a well trained, educated and courteous team of professionals, working to make the sale or purchase of your property as stress free as possible.

THE FINE & COUNTRY
FOUNDATION

Fine & Country Foundation, charity no. 1160989

Striving to relieve homelessness.

To find out more please visit fineandcountry.com/uk/foundation



follow Fine & Country Beccles on



Fine & Country Waveney
14 Blyburgate, Beccles, Suffolk, NR34 9TB
01502 533383 | beccles@fineandcountry.com

Scan the QR Code to find this property on the
Fine & Country website.

