



Westmead Road, Barton-under-Needwood

Offers Over £400,000

🛏 4 🚿 2 🛋 2



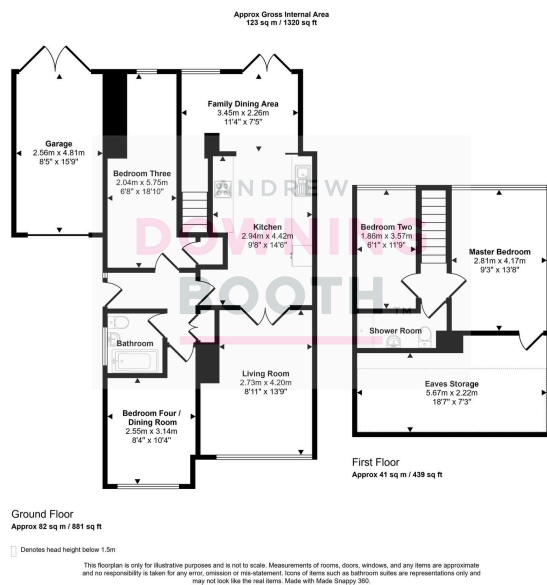
A consistently exceptionally presented and desirably located four bedroom family home, nestled along a quiet residential road in the highly desirable Barton-under-Needwood.

Nestled in the heart of Staffordshire, this idyllic village offers a perfect blend of rural tranquility and modern convenience. Surrounded by picturesque countryside and close to the bustling town of Burton-upon-Trent, the property boasts excellent access to schools and cosy, locally-cherished pubs, with an apparent sense of community. With easy access to the A38 and nearby train links, it's ideal for commuters seeking peaceful village life without sacrificing connectivity. A delightful location for families and professionals alike.

The accommodation boasts impressive dimensions across two floors, with a wealth of natural light flooding the home; the ground floor is home to a truly beautiful kitchen with a family/dining area to the rear, tasteful living room, two bedrooms (each of which offering an abundance of possibilities if desired, such as a games room, home office or home gym) and contemporary family bathroom, whilst to the first floor is both the Master bedroom and second bedroom, as well as a superb shower room. A low maintenance frontage with a garage offers ample off-road parking, whilst a very charming and serene garden laid mainly to lawn sits to the rear.

Put simply, this property wants for nothing. A viewing is imperative in order to appreciate the quality of what's on offer.





- Four Bedroom Semi-Detached Bungalow
- Highly Desirable Village Location
- Flexible & Family-Friendly Layout
- Impressive Driveway & Garage Plus Charming & Private Rear Garden
- EPC Rating: C
- Incredible Standard Of Presentation Throughout
- Nestled Along A Quiet & Peaceful Residential Road
- Beautiful High Specification Kitchen With Family / Dining Area
- Consistently Light & Airy Across The Home
- Council Tax Band: C

