

**sansome
& george**

SANSOME
& GEORGE



3a Elm Grove Flats Elm Grove, Kingsclere, Newbury

Guide Price **£220,000**

Enhanced with AI by **STREET_VUE**

3a Elm Grove Flats Elm Grove

Kingsclere

Sansome & George - Step into this charming CHAIN FREE period 1 Bedroom ground floor maisonette forming part of a conversion of a Grade II listed House located in the heart of a Kingsclere village. With 1 bedroom, this stylish property offers a cosy and inviting atmosphere perfect for a single professional or a couple looking for a peaceful retreat. Boasting a spacious 751 sq ft, the property features a well-appointed kitchen, a comfortable living area, and a modern bathroom. Additionally, the property comes with the convenience of off-street parking, ensuring a hassle-free experience. Surrounded by lush greenery and quaint streets, this home provides a tranquil setting for relaxation and enjoyment. Don't miss the opportunity to make this delightful maisonette your own and start living the village life you've always dreamed of. Embrace the charm and character of this unique property today!

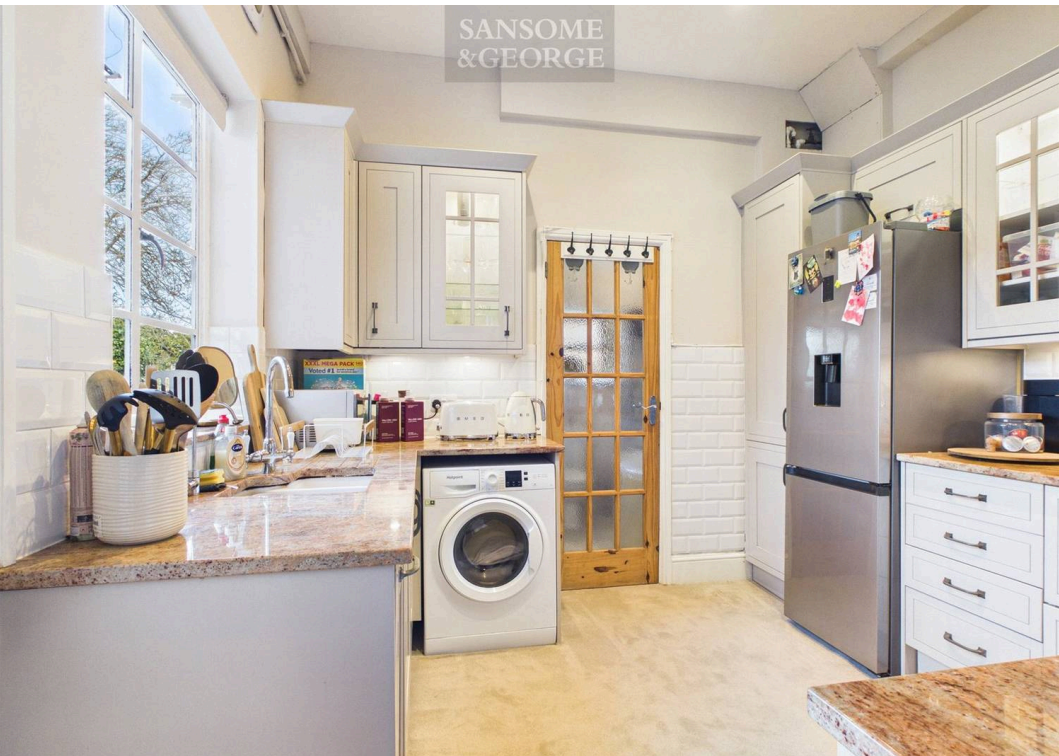
Council Tax band: B

Tenure: Leasehold

EPC Energy Efficiency Rating: D

EPC Environmental Impact Rating:





SANSOME
& GEORGE

3a Elm Grove Flats Elm Grove

Kingsclere

- One Bedroom Ground Floor Apartment Part of a Grade 2 Listed Georgian Building Large Rooms and High Ceilings Modern Throughout Stunning Communal Grounds Central Village Location
- 1 Bedroom Gound Floor Maisonette
- Kitchen
- Living room
- Reception area
- Bedroom
- Bathroom



sansome
& george

SANSOME
&GEORGE



SANSOME
&GEORGE

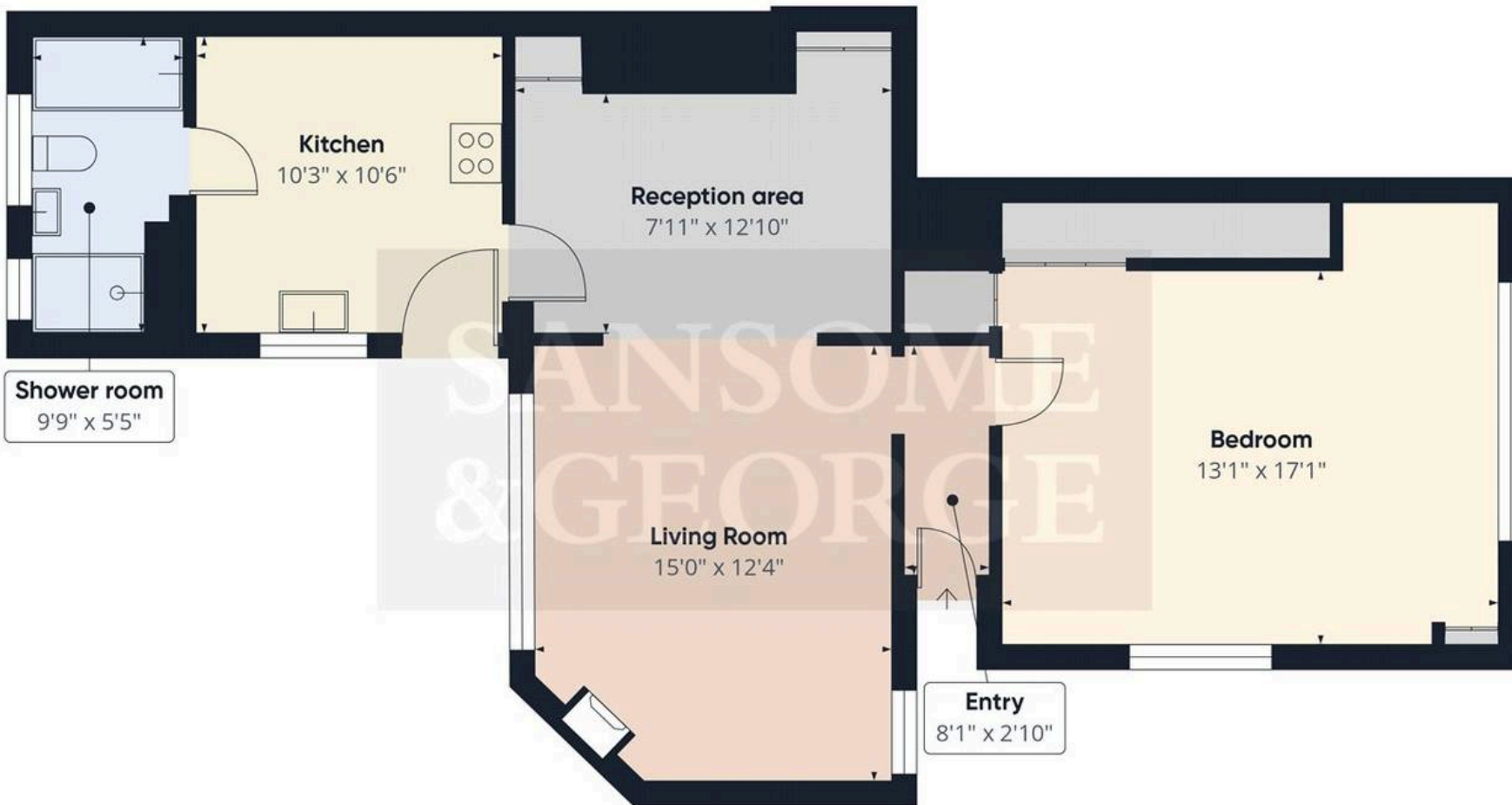


SANSOME
&GEORGE



SANSOME
&GEORGE





Approximate total area^m
751 ft²

(1) Excluding balconies and terraces

Calculations reference the RICS IPMS 3C standard. Measurements are approximate and not to scale. This floor plan is intended for illustration only.

GIRAFFE360



SANSOME
&GEORGE



SANSOME
&GEORGE



SANSOME
&GEORGE



SANSOME
&GEORGE





Sansome & George Basingstoke Office

Sansome & George, 41-43 Winchester Street - RG21 7EF

01256 807 111 • • www.sansomeandgeorge.co.uk/