

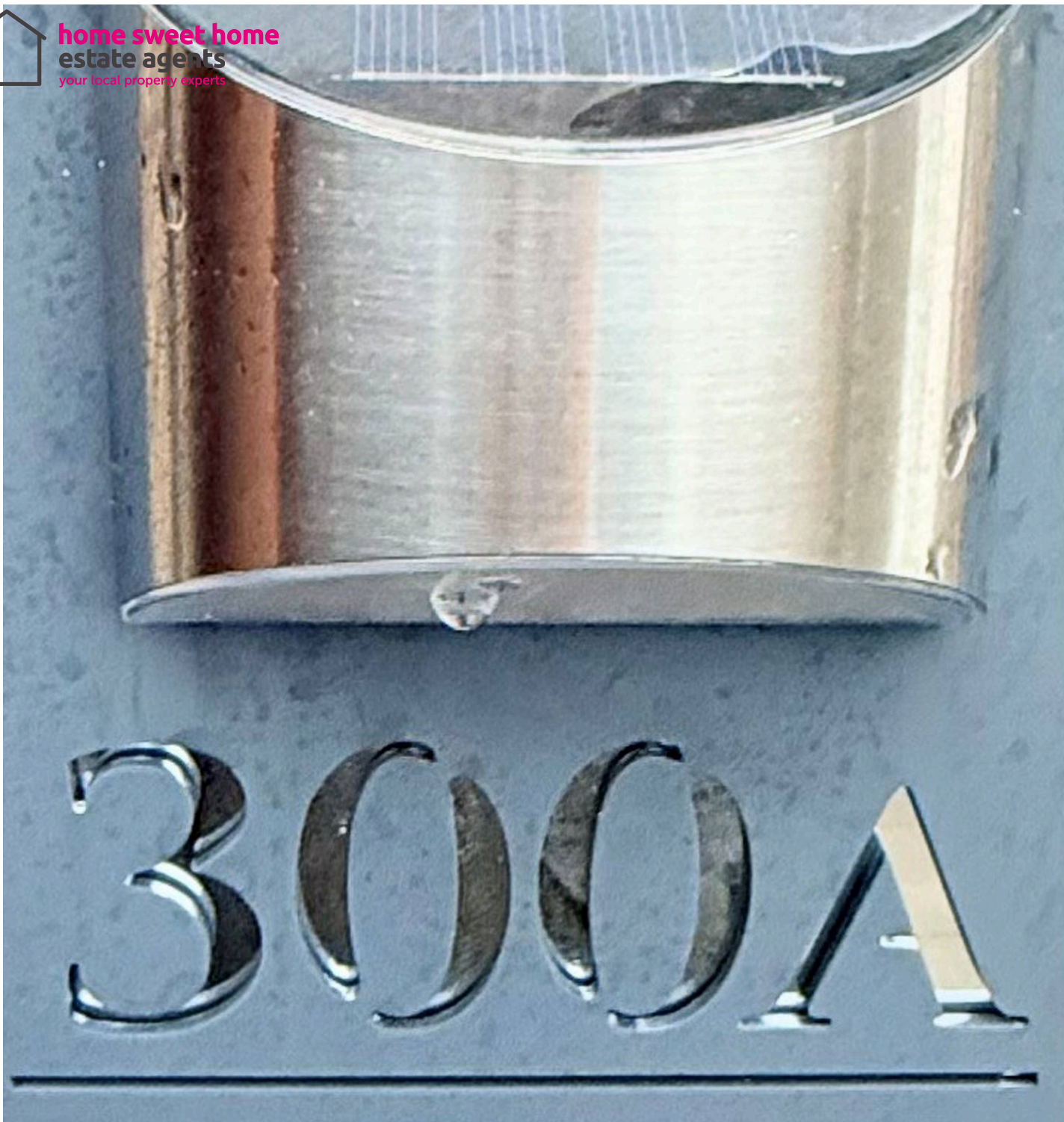


300a High Street, Methil – KY8 3EJ

Leven

Offers Over £59,995





300a High Street

Methil, Leven

One not to be missed.... A newly completed development of 2 x 1 Bedroom & 2 x 2 Bedroom Ground Floor Apartments finished to a high standard throughout, ideal for First Time Buyers with a fantastic rental yield of approx 9% per annum on each unit for investors. Award Winning Home Sweet Home Estate Agents Fife are delighted to present Apartment 300A a superb apartment comprising Open Plan Lounge & Newly installed fitted Kitchen & Appliances - Well finished Double Bedroom with walk in double wardrobe & light - Inner Hall with deep store - Modern Bathroom with electric shower. Benefitting from DG - Electric Heating - EPC E - HOME REPORT £60,000. Externally shared enclosed courtyard garden with 300B, generous non designated off street parking. Viewing Highly Recommended.

Council Tax band: A

Tenure: Freehold

EPC Energy Efficiency Rating: E

EPC Environmental Impact Rating: B

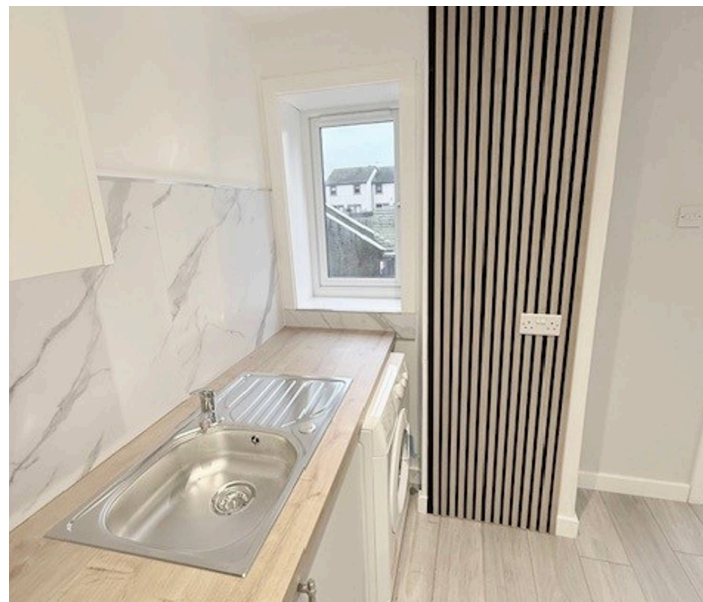
- BEAUTIFUL GROUND FLOOR APARTMENT
- BRIGHT DOUBLE BEDROOM
- SPACIOUS LOUNGE/ FITTED KITCHEN
- DG- ELECTRIC HEATING - EPC E
- SHARED COURTYARD GARDEN
- 9% RENTAL YIELD POTENTIAL
- IDEAL STARTER HOME
- RECENTLY COMPLETED 4 APARTMENT DEVELOPMENT
- VIEWING HIGHLY RECOMMENDED

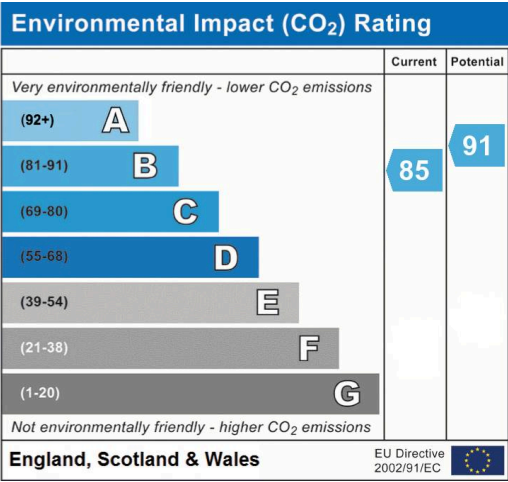
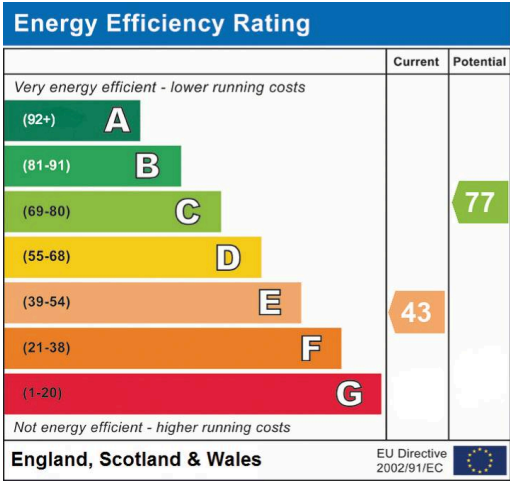


home sweet home
estate agents
your local property experts



COMMUNAL GARDEN





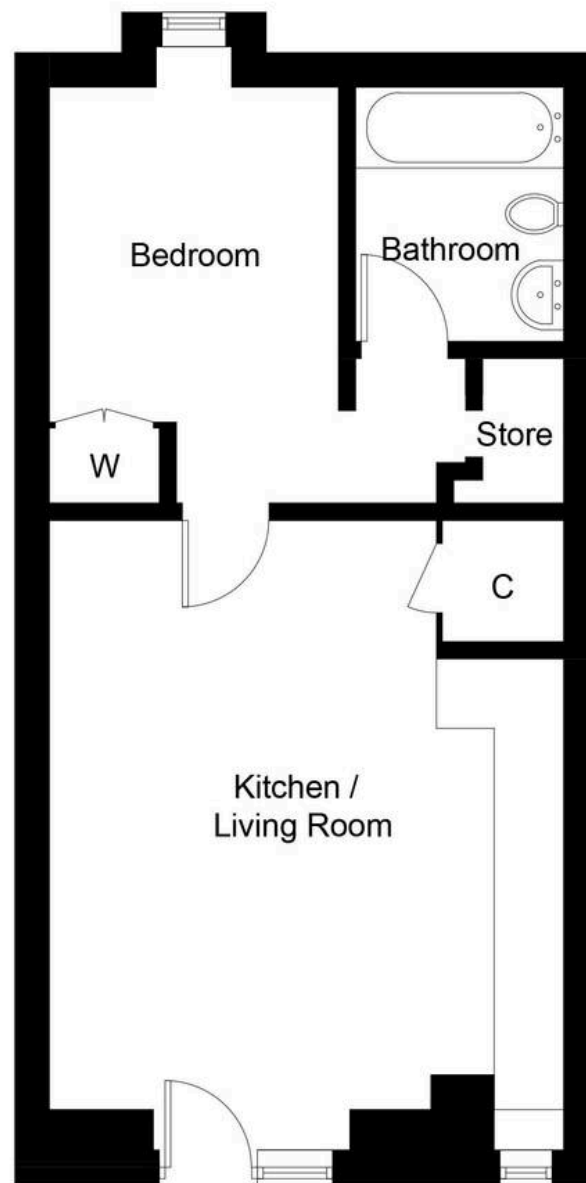


Illustration for identification purposes only, measurements are approximate, not to scale. Fourlabs.co © (ID1272477)



home sweet home
estate agents
your local property experts