



## 21 Kensington Road, Staple Hill, Bristol, BS16 4LX

£300,000

Offered for sale with no onward chain and situated on this popular road is this light and airy period style home. In brief the accommodation comprises, hallway, lounge diner and kitchen. Upstairs are two bedrooms and bathroom. Outside is a small front garden and ample courtyard to the rear with great access to the Bristol to Bath cycle path. With upvc double glazing and gas central heating, viewing is a must! Energy Rating D, Council Tax Band B.

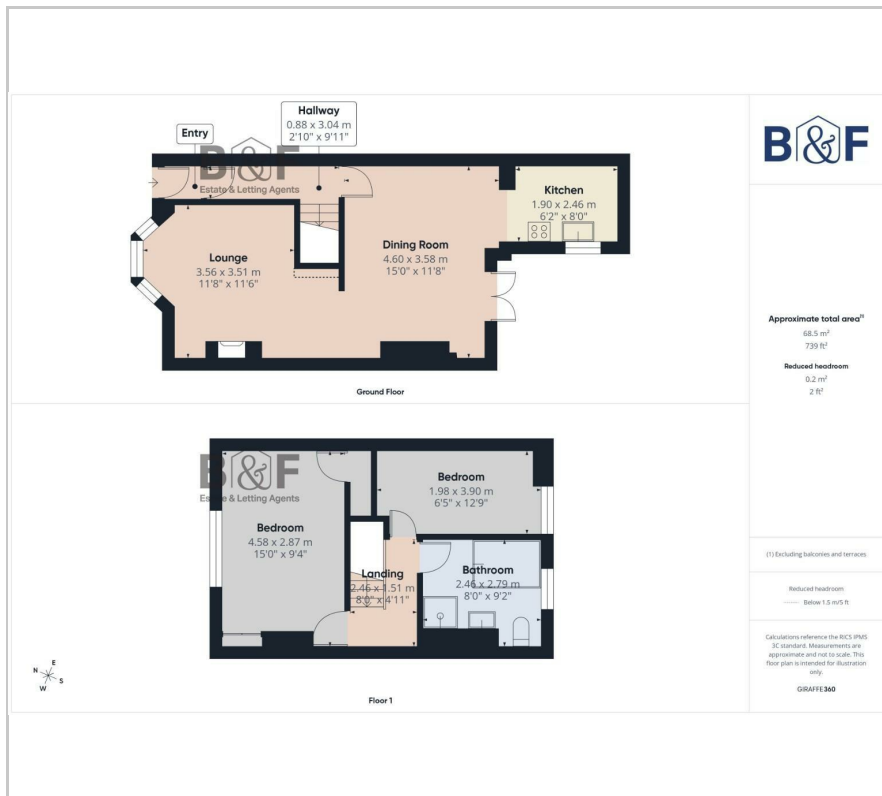
- Popular Road
- Period Home
- Two Bedrooms
- Lounge Diner
- Kitchen
- First Floor Bathroom
- Double Glazing
- Gas Central Heating
- Lovely Courtyard
- No Onward Chain

### Viewing

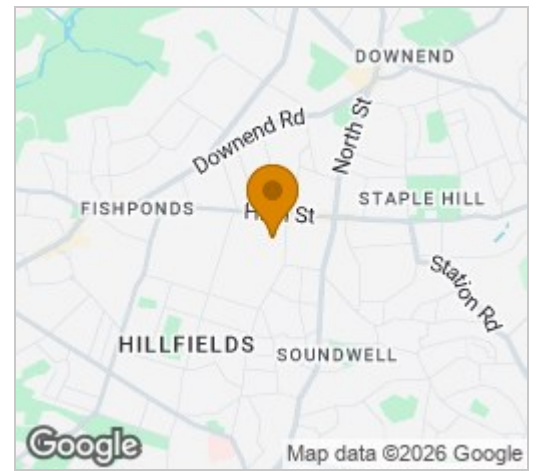
Please contact our Brunt & Fussell Ltd Office on 01179566004 if you wish to arrange a viewing appointment for this property or require further information.



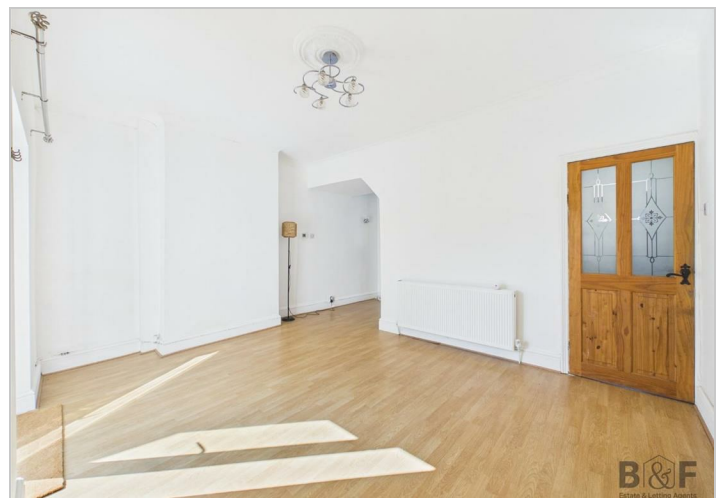
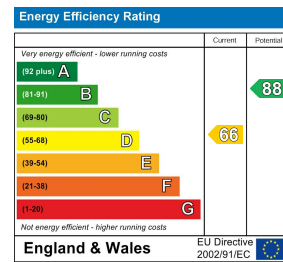
# Floor Plan



# Area Map



# Energy Efficiency Graph



These particulars, whilst believed to be accurate are set out as a general outline only for guidance and do not constitute any part of an offer or contract. Intending purchasers should not rely on them as statements of representation of fact, but must satisfy themselves by inspection or otherwise as to their accuracy. No person in this firm's employment has the authority to make or give any representation or warranty in respect of the property.