

Lansdowne Place, Hove

Offers in Excess of £300,000



- An amazing first floor one bedroom apartment
- Balcony with sea views
- High ceilings and period features
- Share of freehold
- No onward chain

## Flat 3, 24 Lansdowne Place, Hove, BN3 1HG



This remarkable first-floor one-bedroom apartment is situated on one of Hove's premier roads, just a stone's throw from the seafront. The property boasts a spacious open-plan living area that seamlessly connects to a balcony, providing stunning sea views. High ceilings and numerous period features enhance the sense of space and charm.

The generous double bedroom includes an en suite shower room, adding to the apartment's appeal. It is being sold with a share of the freehold and no onward chain, making it a hassle-free purchase. The location is unbeatable, with a wealth of local amenities, restaurants, and fantastic bars just moments away.



## Accommodation

### FIRST FLOOR

LIVINGROOM/KITCHEN

ENTRANCE PORCH

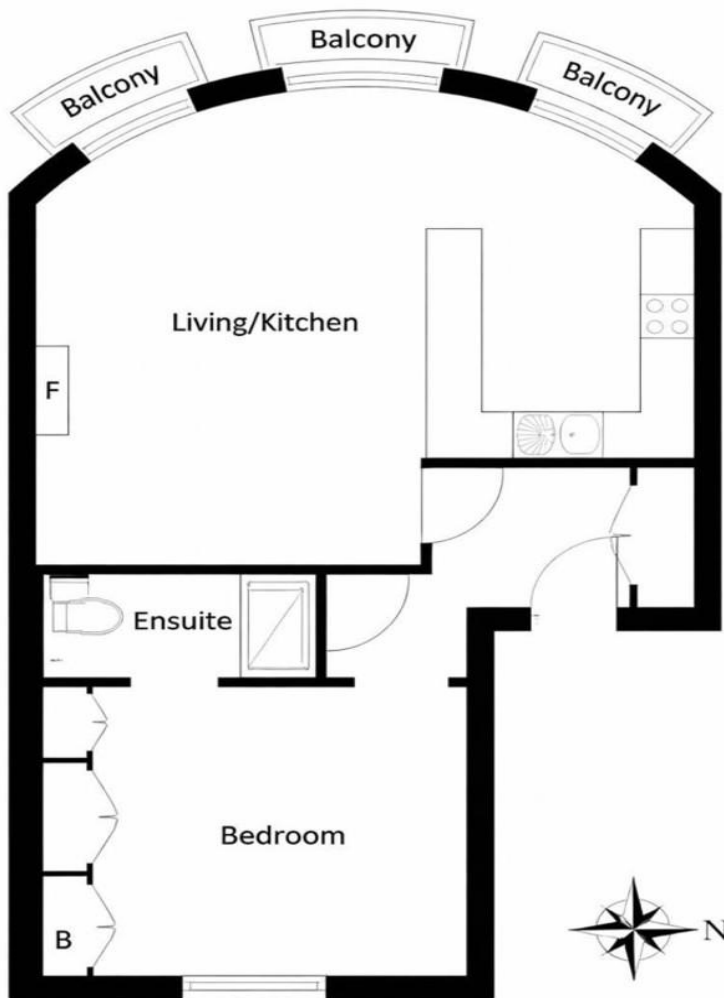
BEDROOM

ENSUITE SHOWER ROOM

### OUTSIDE

BALCONY

## Landowne Place



Approximate Floor Area  
511.28 sq ft  
(47.50 sq m)

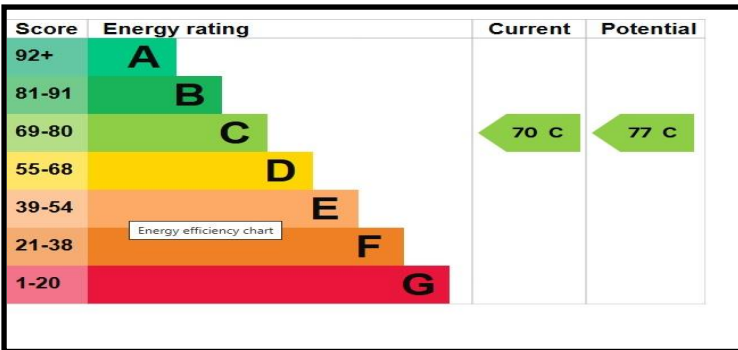




## What to do next

If you would like to see this property internally, then please call Tel 01273 771111 or email us on [westernrd@phillipsandstill.co.uk](mailto:westernrd@phillipsandstill.co.uk) and we can arrange an appointment for you to view

After you have viewed this property, feel free to contact us regarding any questions you have or if you would like to place an offer on the property.



## Agents Note:

Whilst every care has been taken to prepare these sales particulars, they are for guidance purposes only. All measurements are approximate and are for general guidance purposes only and whilst every care has been taken to ensure their accuracy, they should not be relied upon and potential buyers are advised to recheck the measurements.

## Helpful Buying Information

We recognise that buying a property is a big commitment and therefore recommend that you visit the local authority website (contact the branch for details) and the following websites for more helpful information about the property and local area before proceeding:

- [www.environment-agency.gov.uk](http://www.environment-agency.gov.uk)
- [www.landregistry.gov.uk](http://www.landregistry.gov.uk)
- [www.gov.uk/green-deal-energy-saving-measures](http://www.gov.uk/green-deal-energy-saving-measures)
- [www.homeoffice.gov.uk](http://www.homeoffice.gov.uk)
- [www.helptobuy.org.uk](http://www.helptobuy.org.uk)
- [www.fensa.org.uk](http://www.fensa.org.uk)
- [www.brighton-hove.gov.uk](http://www.brighton-hove.gov.uk)
- <http://list.english-heritage.org.uk>

## Directions

For directions to this property please contact us.

## Phillips & Still

**01273 771111**

[westernrd@phillipsandstill.co.uk](mailto:westernrd@phillipsandstill.co.uk)

112 Western Road, Brighton, East Sussex, BN1 2AB

[www.phillipsandstill.co.uk](http://www.phillipsandstill.co.uk)