

abbotFox

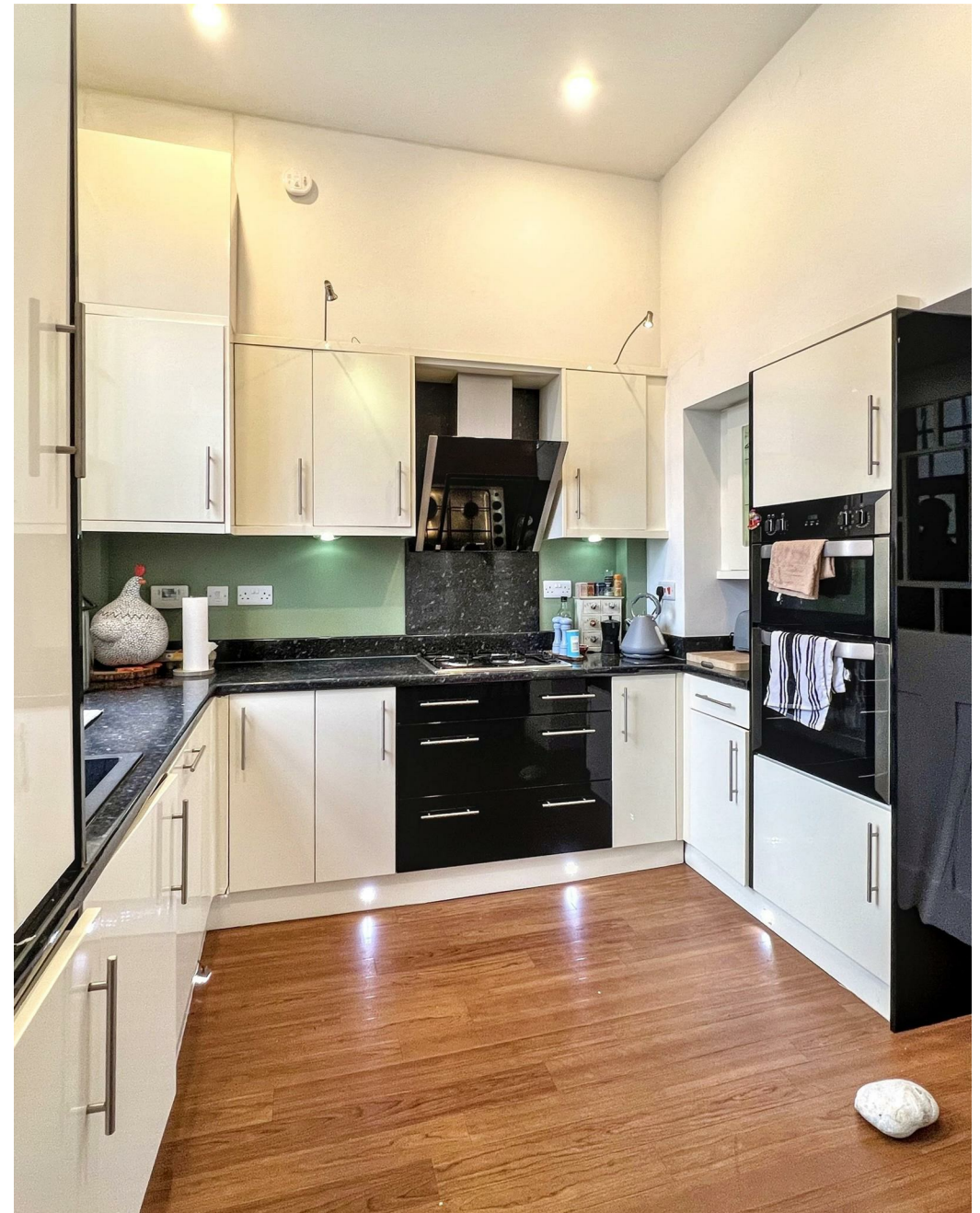


St Andrews Park, NR7
£1,500 PCM

“

We are a team of genuine individuals who hold a deep passion for both property and marketing. Collectively, we bring over 70 years of experience in the property market of Norfolk and Suffolk. Our affection for both counties runs deep, and we are enthusiastic about sharing our passion with you.

Colin McKenzie | **Branch Partner**







THE DETAIL_____

abbotFox presents this executive part furnished townhouse situated within the prestigious and popular St Andrews Park. The property boasts high ceilings, neutrally painted walls and impressive arched windows which overlook the park-style grounds. All decorated and presented with a designer feel.

Outside: the property has a patio garden, one allocated parking space and a secure garage with parking in front of it. There is a communal play area on-site for children. Perfect for those who want a taste of the good life. Thorpe St Andrew is situated to the east of Norwich and is serviced by numerous local amenities, including shops, schools, doctors and dentist surgeries. There are regular bus services into the city centre with Norwich train station providing daily services to Cambridge and London approximately 2 miles away.







THE HIGHLIGHTS__

- Available Febuary 2026
- Furnished
- Spacious Lounge
- Modern Fully Equipped Kitchen
- Dining Area
- Two Double Bedrooms
- Master with En Suite
- Four Peice Bathroom
- Two allocated parking spaces
- Garage

Let's talk

01603 660000

sales@abbotfox.co.uk

[@abbotfox](#)

EPC RATING - D

Disclaimer – In accordance with the Property Misdescriptions Act, the company abbotFox gives notice that all descriptions, references to condition, necessary permissions for use and other details are given in good faith and believed to be correct, but any purchaser should not rely on them as statements of fact, and must satisfy themselves by inspection or other means, as to their accuracy.