

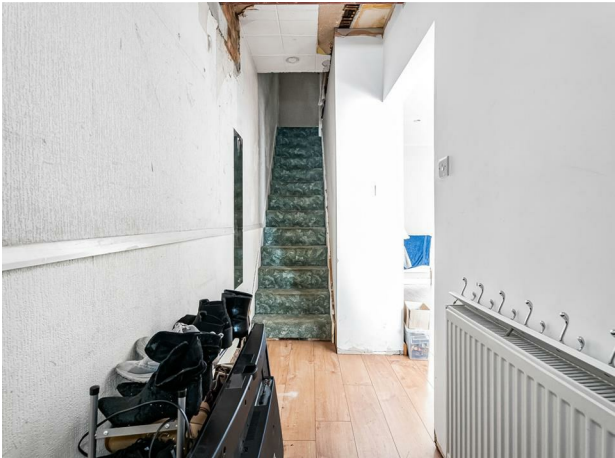


Castles

OFFERS IN EXCESS OF
£389,950
Sheldon Road
London, N18 1RQ

PROPERTY SUMMARY

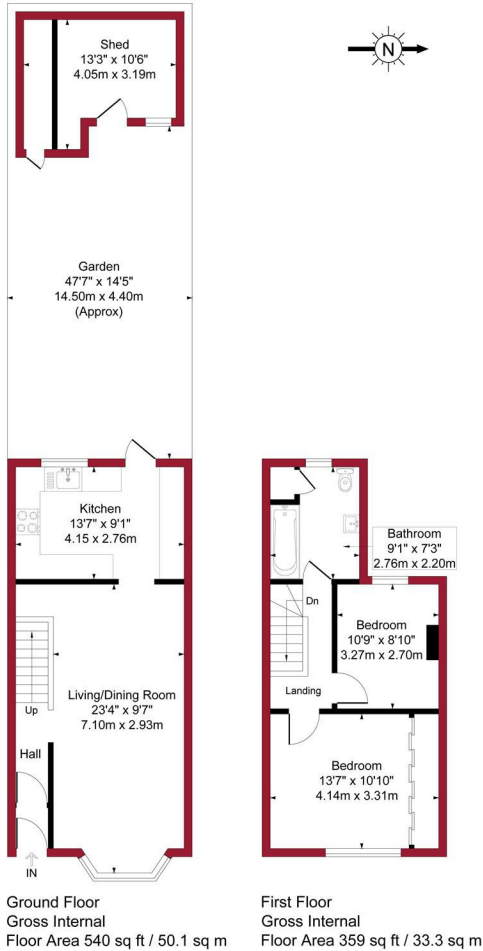
In our opinion a well presented two bedroom part extended Victorian terraced property situated on the popular Huxley Estate N18. The property comprises of Reception one and kitchen to ground floor with a further two bedrooms and bathroom to first floor. It also has features to include, 47ft rear garden with a shed, gas central heating, double glazing and can be offered for sale on a chain free basis.



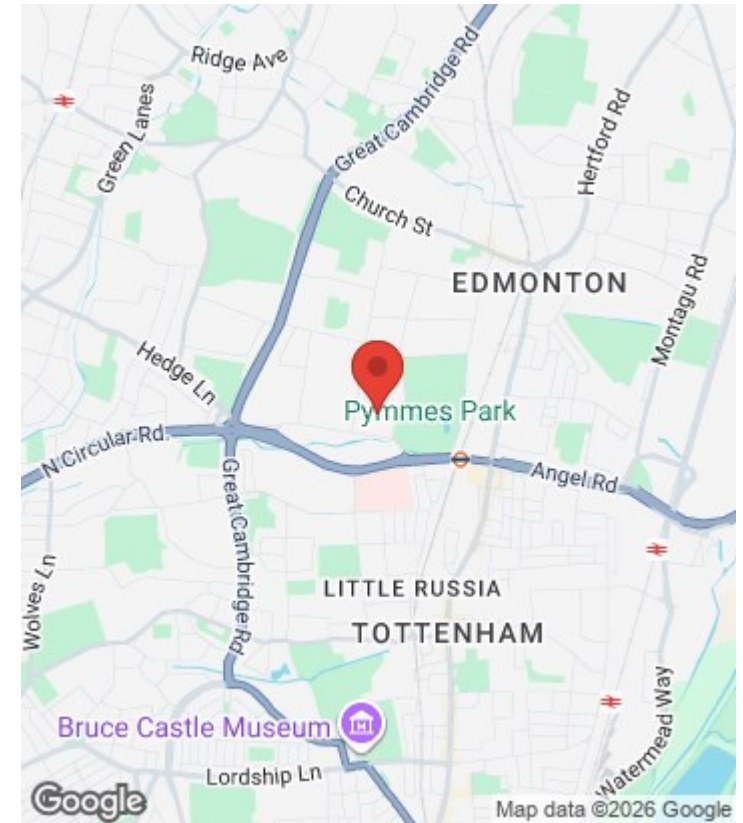
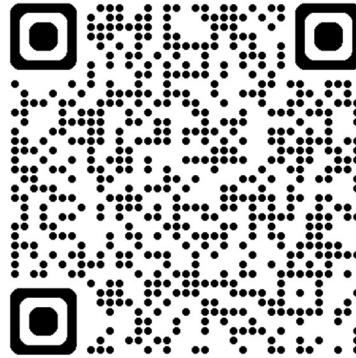


Sheldon Road, London, N18

Approximate Gross Internal Area = 899 sq ft / 83.4 sq m
(Including Outbuilding)



For a guide to the area
please scan this code for
more information



House

Freehold

Council:

Council Tax Band: C

Agents Note: Whilst every care has been taken to prepare these particulars, they are for guidance purposes only. All measurements are approximate and are for general guidance purposes only and whilst every care has been taken to ensure their accuracy, they should not be relied upon and potential buyers/tenants are advised to recheck the measurements



OFFICE ADDRESS

438 Hertford Road
Edmonton
London
N9 8AB

OFFICE DETAILS

020 8804 8123
edmonton@castles.london
<https://www.castles.london/>

