



**Guide Price**  
**£230,000**

**Freehold**

1x  1x  1x 

**Westdene Meadows,  
Cranleigh, Surrey, GU6**

**OVER 60?**

Secure this property  
for up to **59% less!**

**cubitt & west**  
Helping you move forwards



## Main features

- One bedroom house with built in storage
- Cosy woodburner in the lounge
- Allocated parking
- Quiet cul-de-sac location
- Close to local shop, bus stop and within easy reach of Cranleigh High Street

## Accommodation

### GROUND FLOOR

Lounge: 11'6 x 11'0 (3.51m x 3.36m)

Kitchen: 7'1 x 5'10 (2.16m x 1.78m)

### FIRST FLOOR

Landing

Bedroom : 11'1 x 9'11 (3.38m x 3.02m)

Bathroom

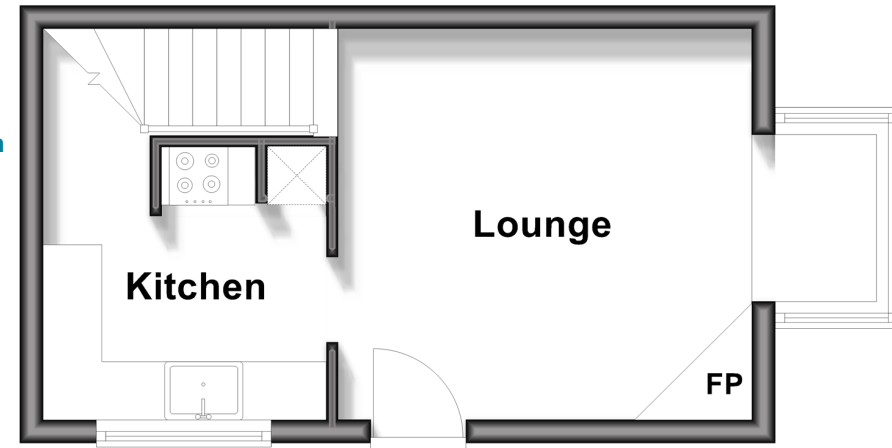
### OUTSIDE

Communal Garden

Allocated Parking Space

## Ground Floor

Approx. 21.0 sq. metres (226.4 sq. feet)



## First Floor

Approx. 20.3 sq. metres (218.2 sq. feet)



**Call Cranleigh - 01483 271567 ■ [cubittandwest.co.uk](http://cubittandwest.co.uk)**

- Legal advice should be taken to verify fixtures/fittings, planning, alterations and/or lease details
- Appliances & services are untested, dimensions are approximate and floor plans are not to scale
- Through a Homewise Home For Life Plan people aged 60+ can secure this property for up to 50% less, by purchasing a Lifetime Lease.



20307024/20251106/HM/KAB