

# BRUCE MATHER

---

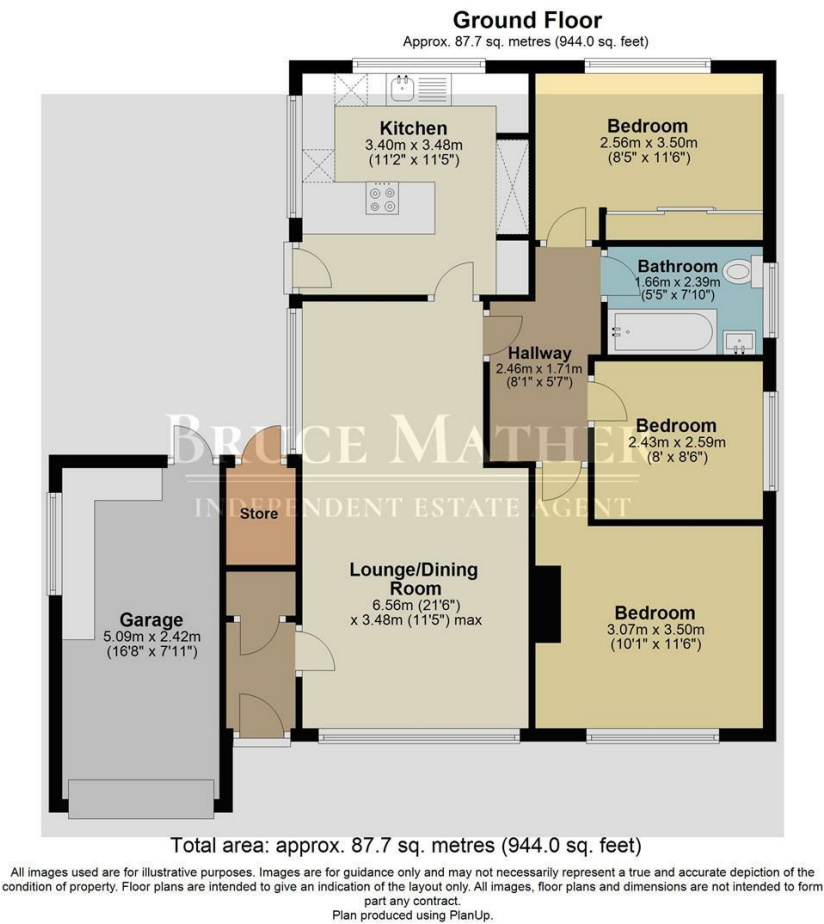
## INDEPENDENT ESTATE AGENT



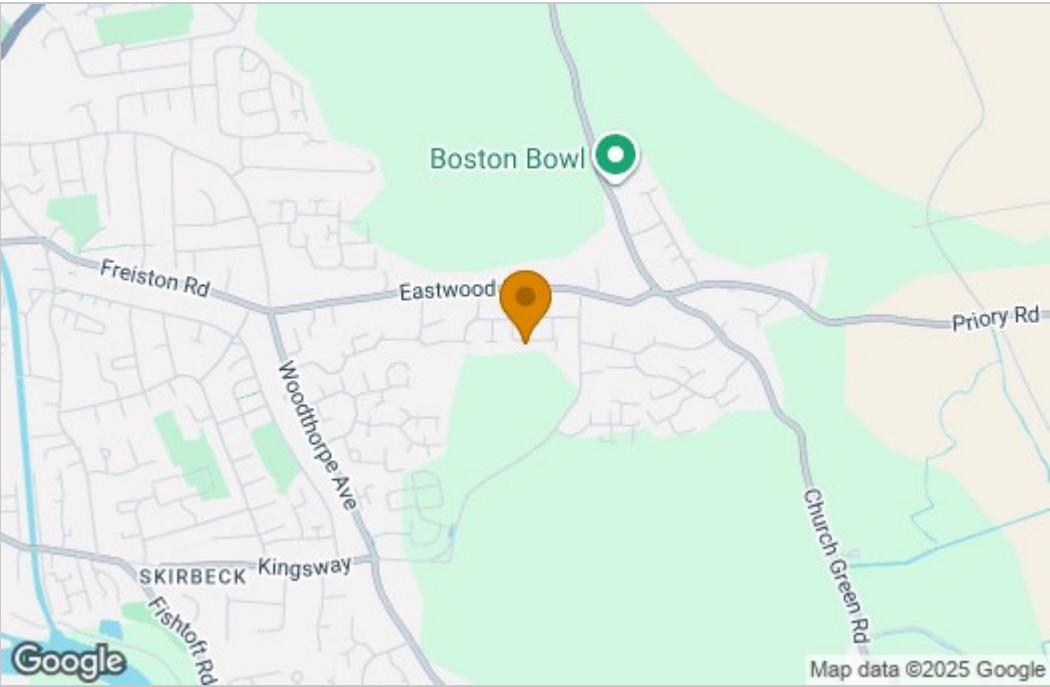
**11 Churchill Drive, Boston, PE21 0NH**  
**Offers Over £220,000**

A delightful three-bedroom detached bungalow on the edge of town, with a lovely split garden, half to grass and half with raised vegetable beds, sheds and a greenhouse. In great condition, this bungalow is ready to move straight into, and includes a modern kitchen and a lounge/diner. The home has recently been renovated with a new boiler, new wiring and new radiators, so is in turnkey condition. Outside, there is a garage to the side and a spacious garden to the rear overlooking field views. Located in a thought after location on the edge of Boston, just a walk or short drive for all your shopping, schools and amenities. Book a viewing today by calling Bruce Mather Estate Agents on 01205 365032.

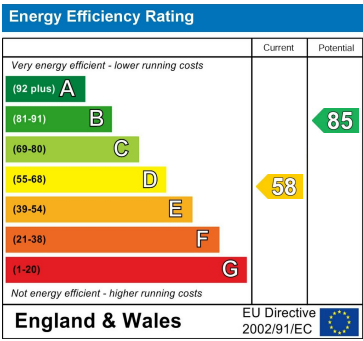
Floor Plan



Area Map



Energy Efficiency Graph



These particulars, whilst believed to be accurate are set out as a general outline only for guidance and do not constitute any part of an offer or contract. Intending purchasers should not rely on them as statements of representation of fact, but must satisfy themselves by inspection or otherwise as to their accuracy. No person in this firms employment has the authority to make or give any representation or warranty in respect of the property.