



## Church Lane, SW17

£350,000

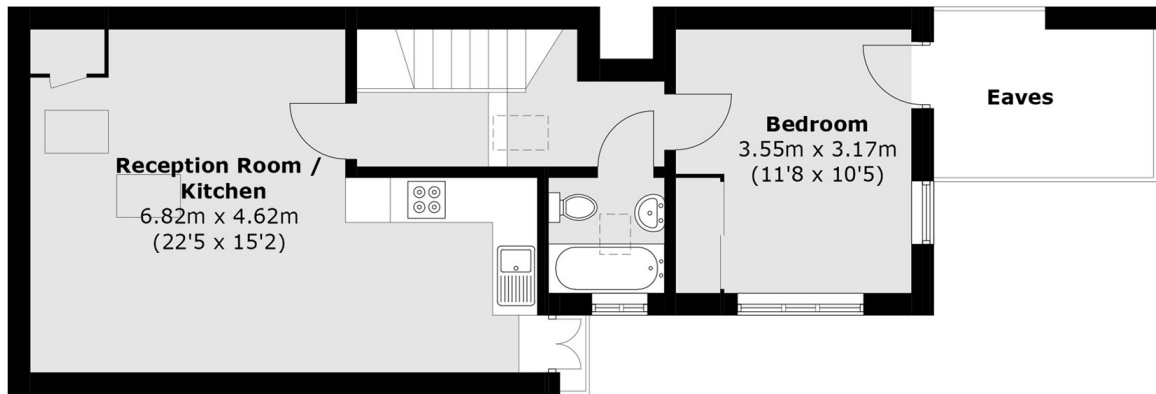
A charming and beautifully presented one double bedroom apartment in superb condition with an open plan kitchen/reception room, a large double bedroom and a stylish bathroom moments from Tooting Bec.

Church Lane is perfectly positioned for easy access to the many shops, bars and restaurants of Furzedown, Tooting Bec & Balham on the doorstep. The vast open spaces of Tooting Bec Common are a short stroll away, with Tooting Bec and Broadway Underground Stations closeby.

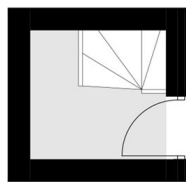
### Features

- One Double Bedroom
- Chain Free
- Stunning Interior
- Desirable Location
- Fitted Kitchen
- Period Conversion

# Church Lane, LONDON, SW17



**First Floor**



**Ground Floor**

Total area (approx.): 52 sq. m (556.4 sq. ft)  
(Excluding Eaves)