



John Islip Street, SW1P £595,000

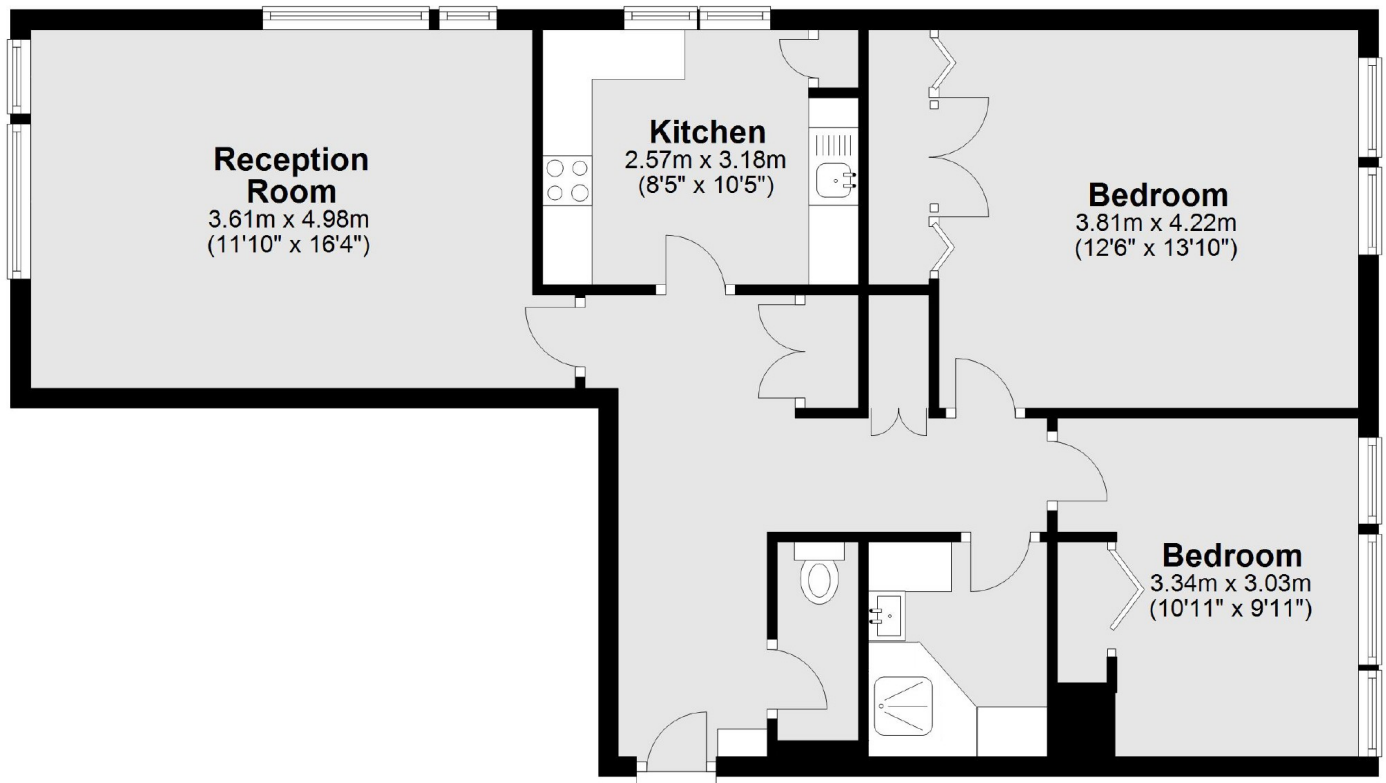
A two bedroom apartment with partial river views in a modern purpose - built block. This property benefits from 24 hour concierge, two lifts and a communal roof terrace which provides 360 degree views across London.

This is an excellent location; Millbank Court is situated behind The Tate Gallery and transport links are very good with Pimlico, Victoria and Westminster tube stations nearby.

Features

- Communal Heating / Hot Water
- Communal Roof Terrace
- 24 Hour Concierge
- Share Of Freehold
- River Views
- Two Lifts

John Islip Street,
London, SW1P



Total area: approx. 75.9 sq. metres (816.5 sq. feet)

Dexters

Westminster
50 Churton Street
London
SW1V 2LP
Sales
020 7590 9570

Energy Rating: D. We aim to make our particulars both accurate and reliable. However they are not guaranteed; nor do they form part of an offer or contract. If you require clarification on any points then please contact us, especially if you're traveling some distance to view. Please note that appliances and heating systems have not been tested and therefore no warranties can be given as to their good working order.

 **RICS** | Regulated
Estate Agent
and Letting Agent

[dexters.co.uk](https://www.dexters.co.uk)