



Lichfield Road, Cambridge CB1 3TR



welcome to

Lichfield Road, Cambridge

A well proportioned modern first floor two bedroom apartment ideally situated for access to the railway station, Addenbrookes Hospital and the City Centre.

Accommodation

Entrance Hall

Front door leads through into a welcoming entrance hallway with storage cupboard and door to:-

Living Room

which offers space for dining table and chairs and also benefits from a large walk-in cupboard. Doors to:-

Kitchen

comprising of stainless steel sink unit in front of double glazed window. Plumbing for washing machine and dishwasher. A range of top and base units with work surfaces over. Electric oven. Electric hob and electric extractor fan.

Shower Room

comprises of a modern suite including wash hand basin with vanity unit, double shower cubicle, WC, extractor fan, heated towel rail and opaque double glazed window.

Bedroom One

A good size double bedroom and benefits from plenty of space for furniture and wardrobes.

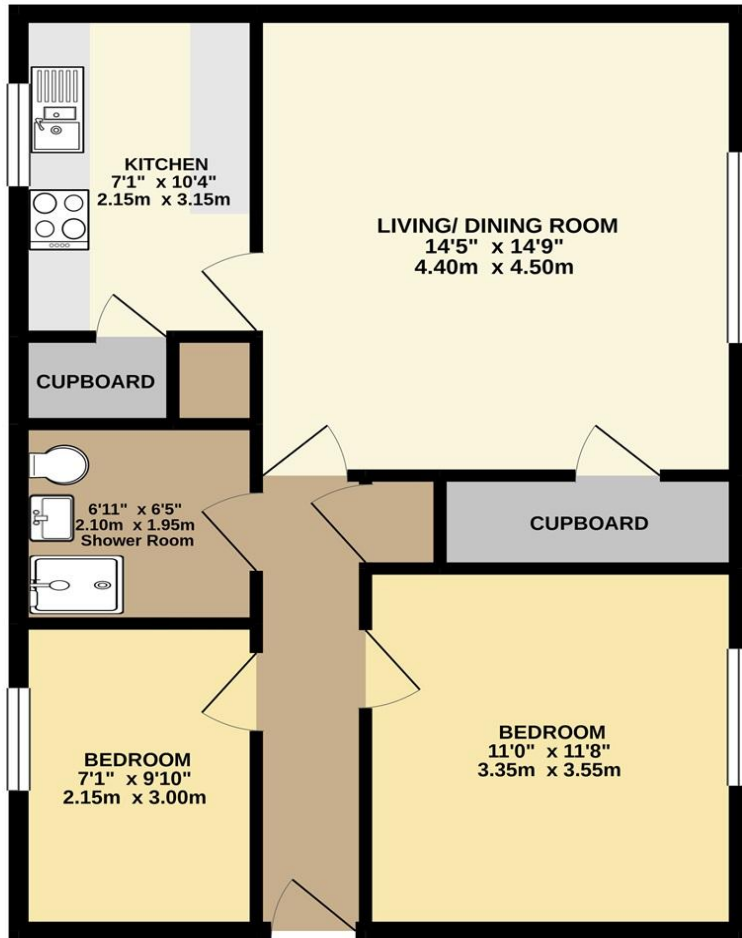
Bedroom Two

A good size single room making it the ideal study or guest room.

Location

Lichfield Road is a popular location of modern apartments and houses situated just off Cherry Hinton Road close to the junction with Perne Road. Situated in the favoured southern part of the city close to excellent local facilities and amenities the area boasts easy access to the city centre, Addenbrookes Hospital, the railway station and the pretty grounds of Cherry Hinton Hall.

GROUND FLOOR
625 sq.ft. (58.1 sq.m.) approx.



LICHFIELD ROAD, CAMBRIDGE
TOTAL FLOOR AREA : 625 sq.ft. (58.1 sq.m.) approx.
Made with Metropix ©2021

welcome to
Lichfield Road,
Cambridge

- Two bedroom first floor apartment
- Spacious and well presented accommodation
- Recently refitted Kitchen and Shower room
- Gas central heating
- Popular central location

Tenure: Leasehold EPC Rating: C

Council Tax Band: B Service Charge: Ask Agent

Ground Rent: Ask Agent

This is a Leasehold property with details as follows; Term of Lease 125 years from 08 Feb 1988. Should you require further information please contact the branch. Please Note additional fees could be incurred for items such as Leasehold packs.

offers over

£275,000



view this property online sequencehome.co.uk/Property/CBE100018



Property Ref:
CBE100018 - 0012

1. MONEY LAUNDERING REGULATIONS Intending purchasers will be asked to produce identification documentation at a later stage and we would ask for your co-operation in order that there is no delay in agreeing the sale. 2. These particulars do not constitute part or all of an offer or contract. 3. The measurements indicated are supplied for guidance only and as such must be considered incorrect. Potential buyers are advised to recheck measurements before committing to any expense. 4. We have not tested any apparatus, equipment, fixtures or services and it is in the buyers interest to check the working condition of any appliances. 5. Where an EPC, or a Home Report (Scotland only) is held for this property, it is available for inspection at the branch by appointment. If you require a printed version of a Home Report, you will need to pay a reasonable production charge reflecting printing and other costs. 6. We are not able to offer an opinion either written or verbal on the content of these reports and this must be obtained from your legal representative. 7. Whilst we take care in preparing these reports, a buyer should ensure that his/her legal representative confirms as soon as possible all matters relating to title including the extent and boundaries of the property and other important matters before exchange of contracts.

Tylers is a trading name of Sequence (UK) Limited which is registered in England and Wales under company number 4268443, Registered Office is Cumbria House, 16-20 Hockliffe Street, Leighton Buzzard, Bedfordshire, LU7 1GN. VAT Registration Number is 500 2481 05.



01223 214400



cambridge@tylers.net



104 Cherry Hinton Road, CAMBRIDGE,
Cambridgeshire, CB1 7AJ



sequencehome.co.uk