



Amhurst Road, E8

£1,350,000

A six bedroom Victorian semi-detached home in the heart of Hackney with private garden and driveway. The property currently offers over 2,100 sq ft with further potential to renovate and retains a wealth of period features and grand proportions. It is being sold chain free.

Amhurst Road is currently undergoing a 'green corridor' transformation making it greener and safer with pedestrian and cyclist priority. Hackney Downs and Hackney Central stations are both less than a quarter of a mile away offering excellent transport links across London. The many cafés, restaurants, markets and bars along Mare Street, Broadway Market and Wilton Way are on the doorstep. Hackney Downs Park and London Fields are also both within walking distance.

Features

- Victorian End of Terrace
- Six Bedrooms
- Two Bathrooms
- Private Garden
- Original Features
- Private Driveway



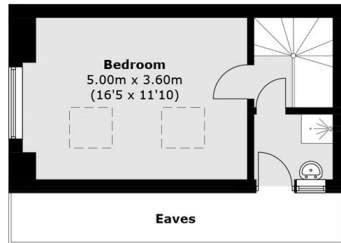
Amhurst Road, E8

Entering on the raised ground floor, the grand original staircase leads to the reception room and eat in kitchen. On the lower ground floor there are currently two double bedrooms, family bathroom, utility room and access to the large private garden.

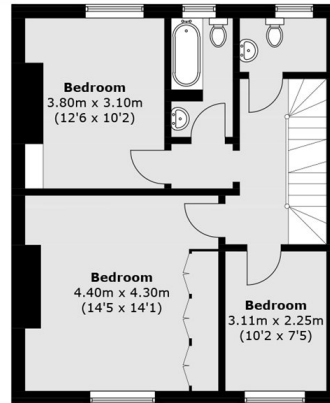
Across the top two floors are four bedrooms and bathroom.



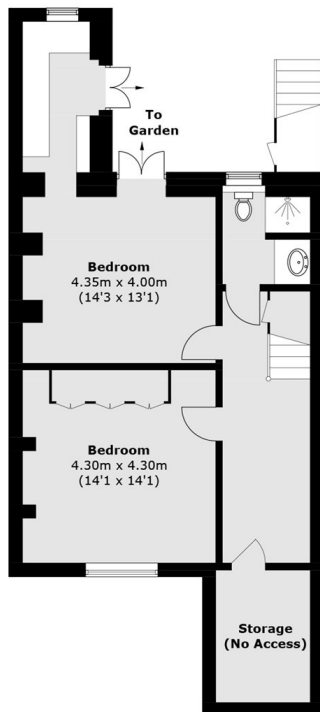
Amhurst Road, London, E8



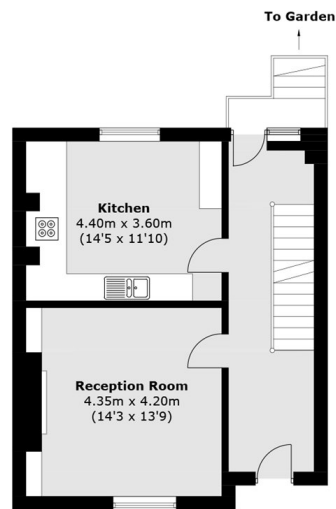
First Floor



Second Floor



Lower Ground Floor



Ground Floor

Total area (approx.): 196.7 sq. m (2,117.1 sq. ft)
(Excluding Eaves)