



Gloucester Terrace, W2

£775,000

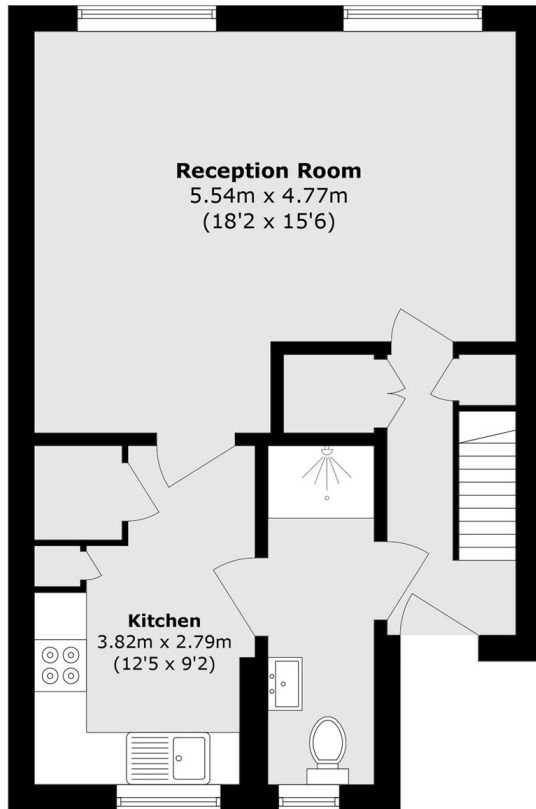
A stylishly refurbished three double bedroom apartment on the top two floors of a white stucco fronted Victorian building. With a large reception room, and a separate high specification eat in kitchen, this is an ideal property for anyone looking for a spacious property and loves entertaining.

Gloucester Terrace is close to Paddington Station, gives easy access across and out of London and to Heathrow. The green spaces of Hyde Park are close by, as are plenty of local shops and restaurants.

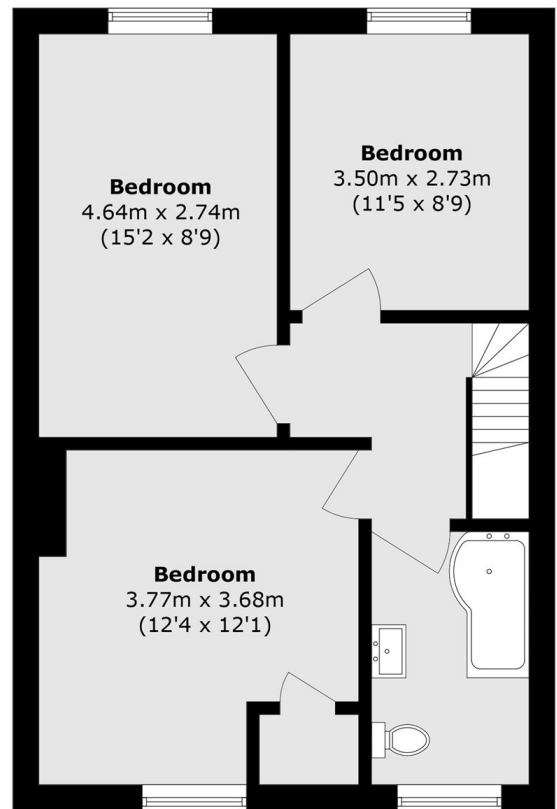
Features

Offers In Excess Of
Three Bedrooms
Top Floor Flat
Separate Kitchen
Split Level
White Stucco Fronted
Close to Paddington

Gloucester Terrace, London, W2



Second Floor



Third Floor

Total area (approx.): 93.9 sq. m (1010.7 sq. ft)