



Essendine Mansions

Essendine Road, W9

£5,200 per month
(£1,200 per week)

SHORT LET - A bright and spacious one bedroom apartment set on the raised ground floor of a period mansion block. Well located for the open green spaces of Paddington Rec whilst the many amenities and transport links of Maida Vale are close by.

CHESTERTONS



Essendine Mansions

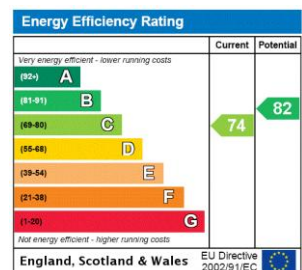
Essendine Road, W9

- SHORT LET
- Great Location
- Period Mansion Block
- Open Plan Kitchen & Reception With Wooden Floors
- Double Bedroom With Built In Wardrobes
- Close To Maida Vale Station



SHORT LET - A bright and spacious one bedroom apartment set on the raised ground floor of a period mansion block located opposite Paddington Recreation Ground. With a contemporary finish throughout the property comprises an open plan kitchen and reception room, a spacious bedroom with ample storage and a modern bathroom. Well located for the open green spaces of Paddington Rec whilst the many amenities and transport links of Maida Vale are close by. EPC Rating D.

Minimum Term: 1 months
Deposit Required: 4 weeks (subject to tenancy length)
Local Authority: City Of Westminster
Council Tax Band: C
EPC Rating: C
Furnished

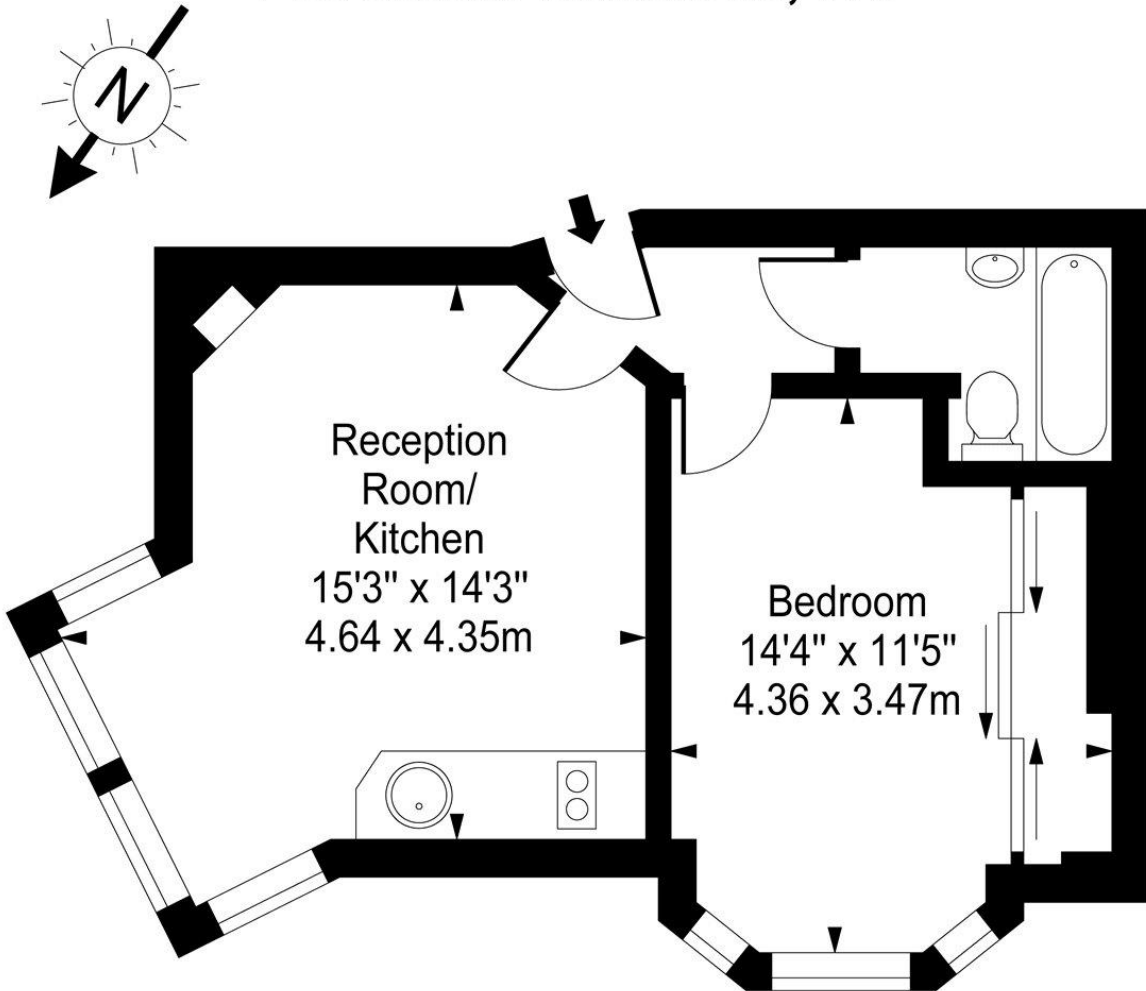


Chestertons Little Venice Lettings

26 Clifton Road
Maida Vale
London
W9 1SX
littlevenicelettingsusers@chestertons.co.uk
02072662369
chestertons.co.uk

Additional tenant charges apply (fees apply to non-AST tenancies only)
Tenancy Agreement Fee: £300
References per Tenant/Guarantor: £60
Inventory check (approx. £100 – £250 inc. VAT)
chestertons.co.uk/property-to-rent/applicable-fees

Essendine Mansions, W9



Upper Ground Floor

Approx Gross Internal Area **400 Sq Ft - 37.16 Sq M**

For Illustration Purposes Only - Not To Scale

www.goldlens.co.uk

Ref. No. 005573G

