



16 Hinton Wood Avenue, Christchurch BH23

£849,950

Mitchells

1963 — TODAY



Hinton Wood Avenue, Christchurch

A beautifully presented detached chalet bungalow on the southern end of Hinton Wood Avenue boasting enjoying a wonderful West facing garden with VIEWS and ACCESS onto Nea Meadows Nature Reserve.



The Property

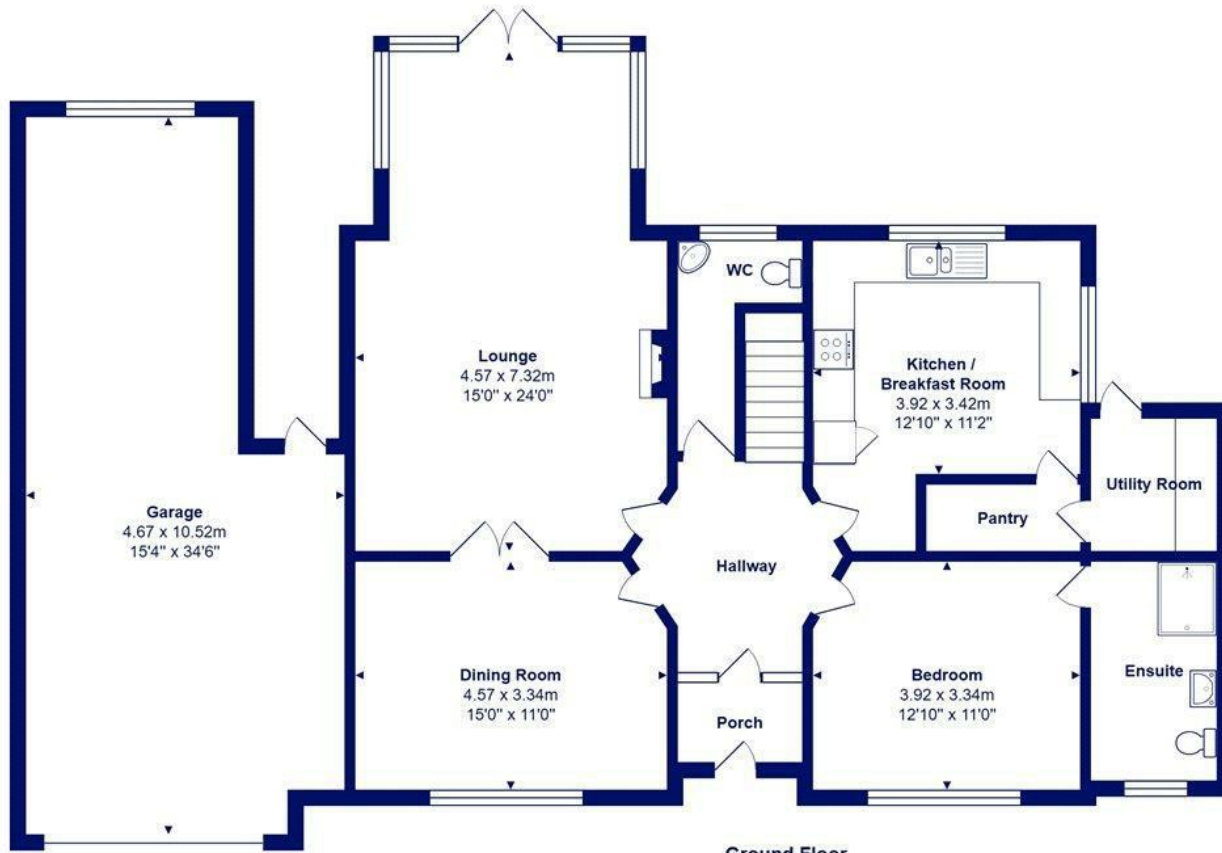
- Beautifully appointed detached chalet in excess of 1600sqft (excluding garage)
- Four bedrooms (one ground floor)
- Two bath/shower rooms (one en-suite)
- Good size kitchen/breakfast room with access onto the gardens
- Fantastic large sitting room with feature fireplace & double doors leading onto the garden
- Separate dining room with sunny aspect
- Glorious rear garden with views and access onto Nea Meadows
- Attached double length garage & ample off-road parking
- Short walk to high street, cliff top and beach
- Council Tax





Location





Total Area: 156.0 m² ... 1679 ft² (excluding garage)
 All measurements are approximate and for display purposes only







www.mitchells.uk.com
Highcliffe@mitchells.uk.com
01425 272206

Highcliffe
284 Lymington Road
Highcliffe
Christchurch
BH23 5ET

